

# Schémas d'application pour la brique coupe-feu CFS-BL



## Applications chemins de câbles

- Application en cloison épaisseur 100 mm (dimensions maximum de l'ouverture 1000 x 1000) CAB-FW-TR-0010/13/16
- Application en cloison épaisseur 130 mm (dimensions maximum de l'ouverture 1000 x 1000) CAB-FW-TR-0030/33/36
- Application en voile rigide épaisseur 100 mm (dimensions maximum de l'ouverture 1000 x 1000) CAB-RW-TR-0020/23/26
- Application en voile rigide épaisseur 130 mm (dimensions maximum de l'ouverture 1000 x 1000) CAB-RW-TR-0039/42/45
- Application en dalle rigide épaisseur 150 mm (dimensions maximum de l'ouverture 1000 x 700) CAB-RF-TR-0048/51/54

\*) Tous les schémas sont également disponibles sur demande en format DWG pour faciliter l'insertion sur des plans.



CONTENTS

Cable trays in a flexible wall

ID

CAB-FW-TR-0010

FIRESTOP BLOCK

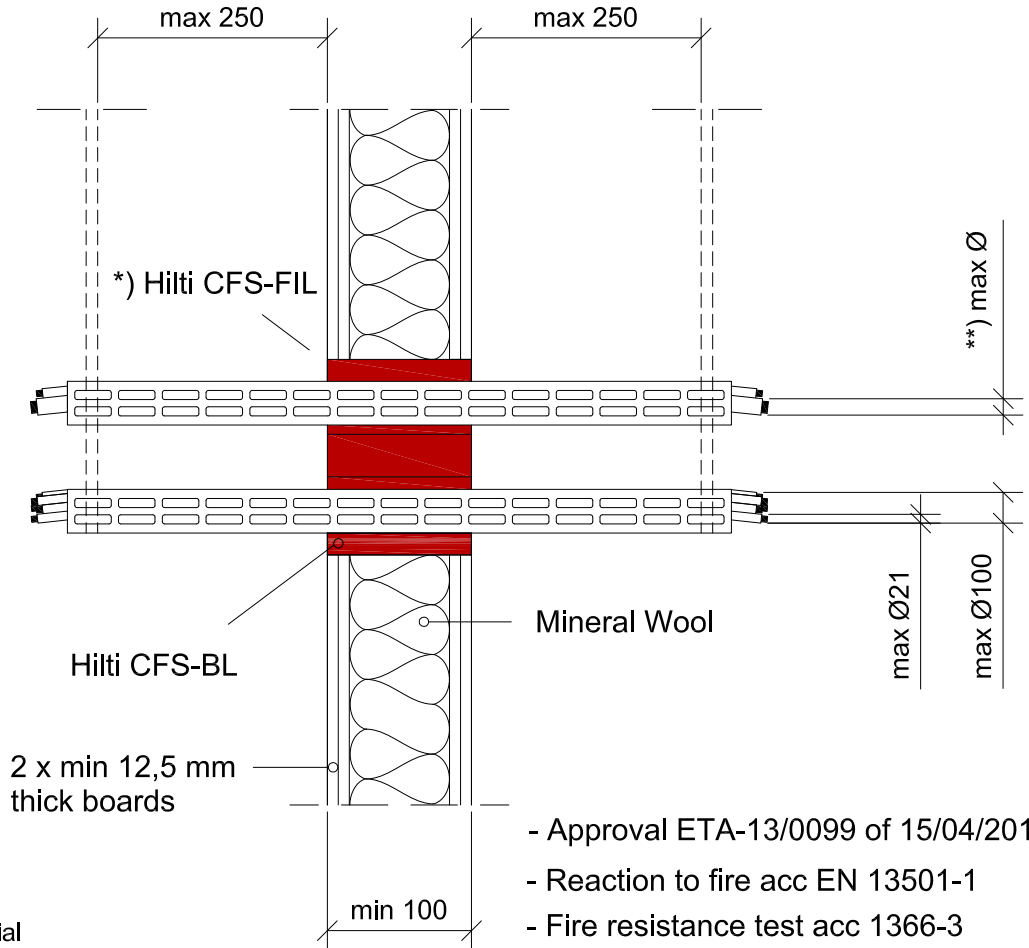
0010\_01

REV  
00

No scale

All units are in milimetres

Fire Rating EI 90



- Approval ETA-13/0099 of 15/04/2013
- Reaction to fire acc EN 13501-1
- Fire resistance test acc 1366-3
- Installation according to Hilti instructions

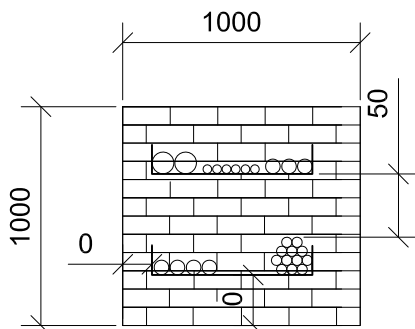
\*) Annular gap fill material

Gaps between services and Hilti Firestop Blocks are filled with Hilti Firestop Filler CFS-FIL, depth 20 mm

Sound Insulation for flexible wall

$D_{n,w} = 54 \text{ dB}$   
 $R_w = 51 \text{ dB}$

Max. opening (1000x1000) and minimum distance



**) Ø cables	Filler	Filler+2putty a)
Ø max single sheated cable	80	80
Ø max single non- sheated cable	---	24
Ø max cable bundle	100	100
Ø max for a cable in a cable bundle	21	21

a) Two layers of CFS-P BA are wrapped around the services or group of services.



CONTENTS

Cable trays in a flexible wall

ID

CAB-FW-TR-0013

FIRESTOP BLOCK

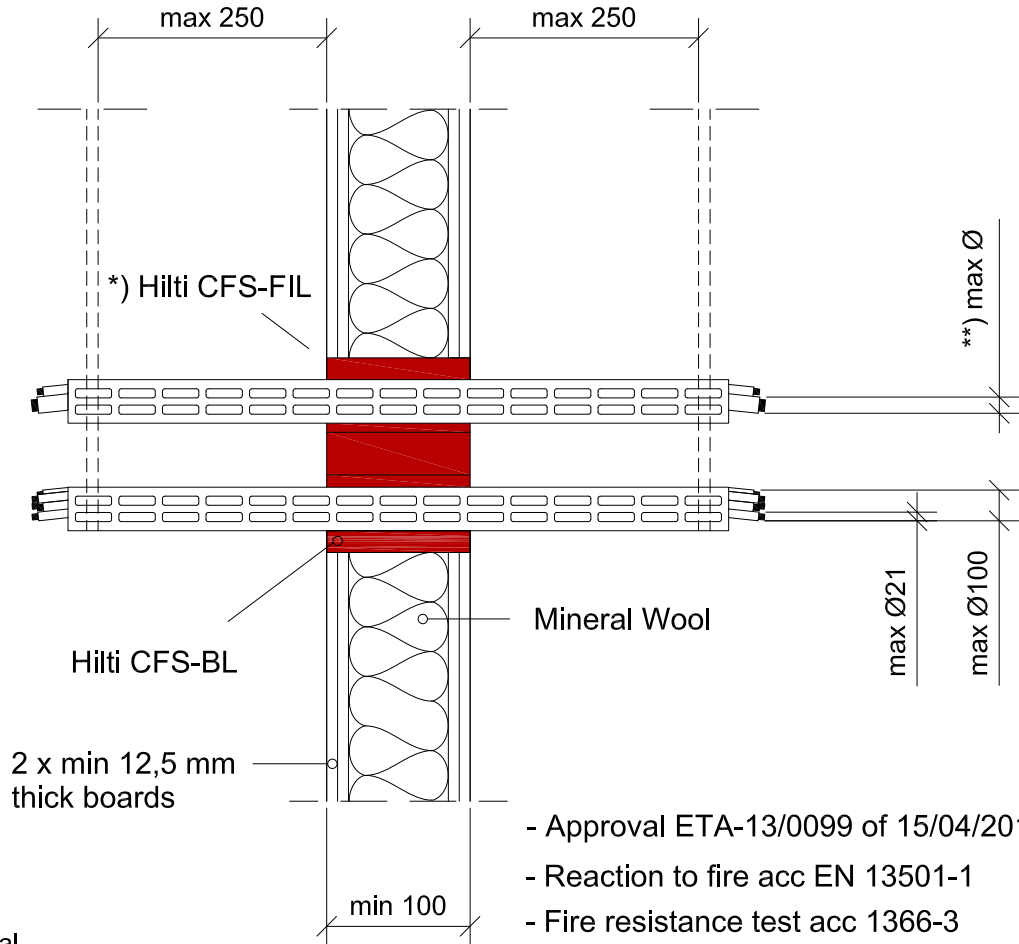
0013\_01

REV 00

No scale

All units are in millimetres

Fire Rating EI 60



- Approval ETA-13/0099 of 15/04/2013
- Reaction to fire acc EN 13501-1
- Fire resistance test acc 1366-3
- Installation according to Hilti instructions

\*) Annular gap fill material

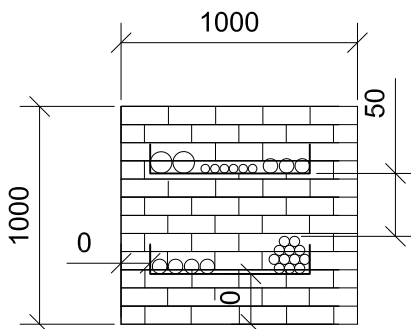
Gaps between services and Hilti Firestop Blocks are filled with Hilti Firestop Filler CFS-FIL, depth 20 mm

Sound Insulation for flexible wall

$$D_{n,w} = 54 \text{ dB}$$

$$R_w = 51 \text{ dB}$$

Max. opening (1000x1000) and minimum distance



\*\*) Ø cables

	Filler	Filler+2putty a)
Ø max single sheated cable	80	80
Ø max single non- sheated cable	24	24
Ø max cable bundle	100	100
Ø max for a cable in a cable bundle	21	21

a) Two layers of CFS-P BA are wrapped around the services or group of services.



CONTENTS

Cable trays in a flexible wall

ID

CAB-FW-TR-0016

FIRESTOP BLOCK

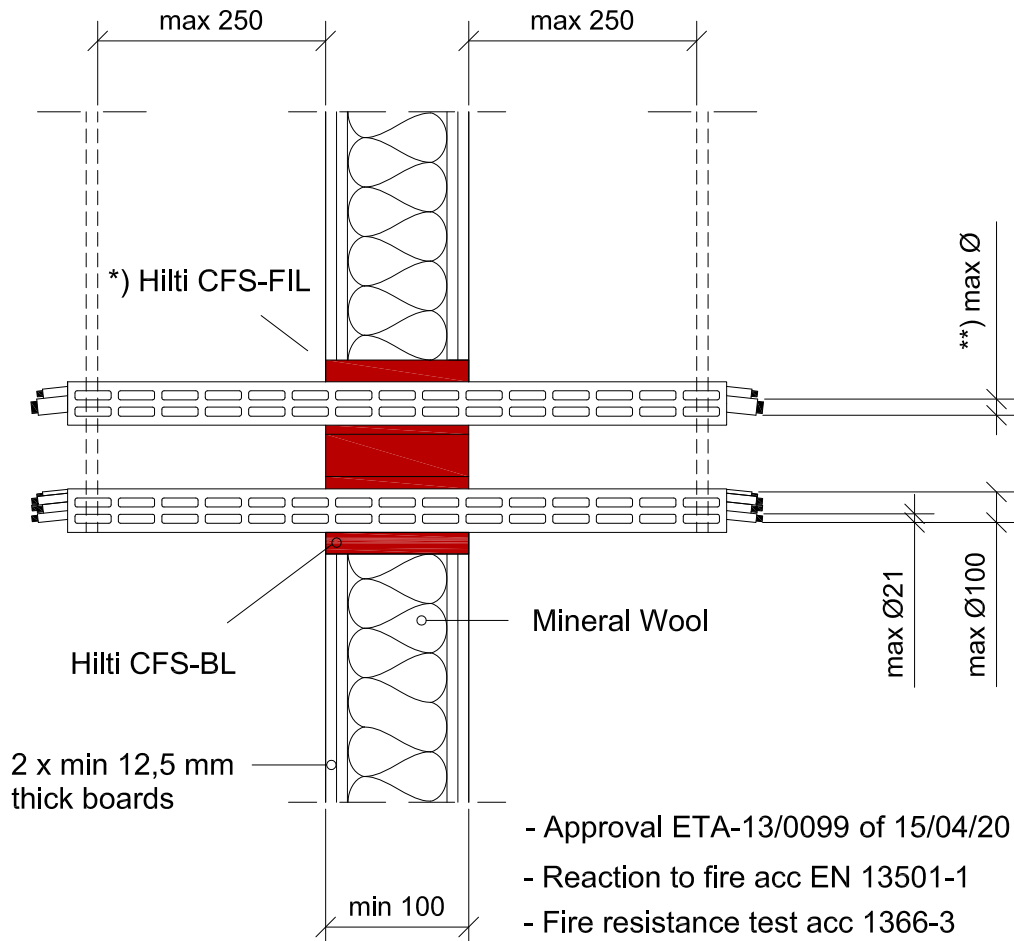
0016\_01

REV 00

No scale

All units are in millimetres

Fire Rating EI 120



\*) Annular gap fill material

Gaps between services and Hilti Firestop Blocks are filled with Hilti Firestop Filler CFS-FIL, depth 20 mm

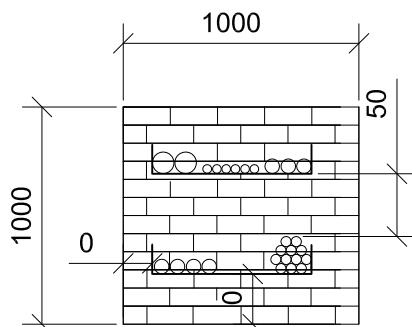
- Approval ETA-13/0099 of 15/04/2013
- Reaction to fire acc EN 13501-1
- Fire resistance test acc 1366-3
- Installation according to Hilti instructions

Sound Insulation for flexible wall

$$D_{n,w} = 54 \text{ dB}$$

$$R_w = 51 \text{ dB}$$

Max. opening (1000x1000) and minimum distance



\*\*) Ø cables

Ø cables	Filler	Filler+2putty a)
Ø max single sheathed cable	---	80
Ø max single non- sheathed cable	---	24
Ø max cable bundle	---	100
Ø max for a cable in a cable bundle	---	21

a) Two layers of CFS-P BA are wrapped around the services or group of services.



CONTENTS

Cable trays in a rigid wall

ID

CAB-RW-TR-0020

FIRESTOP BLOCK

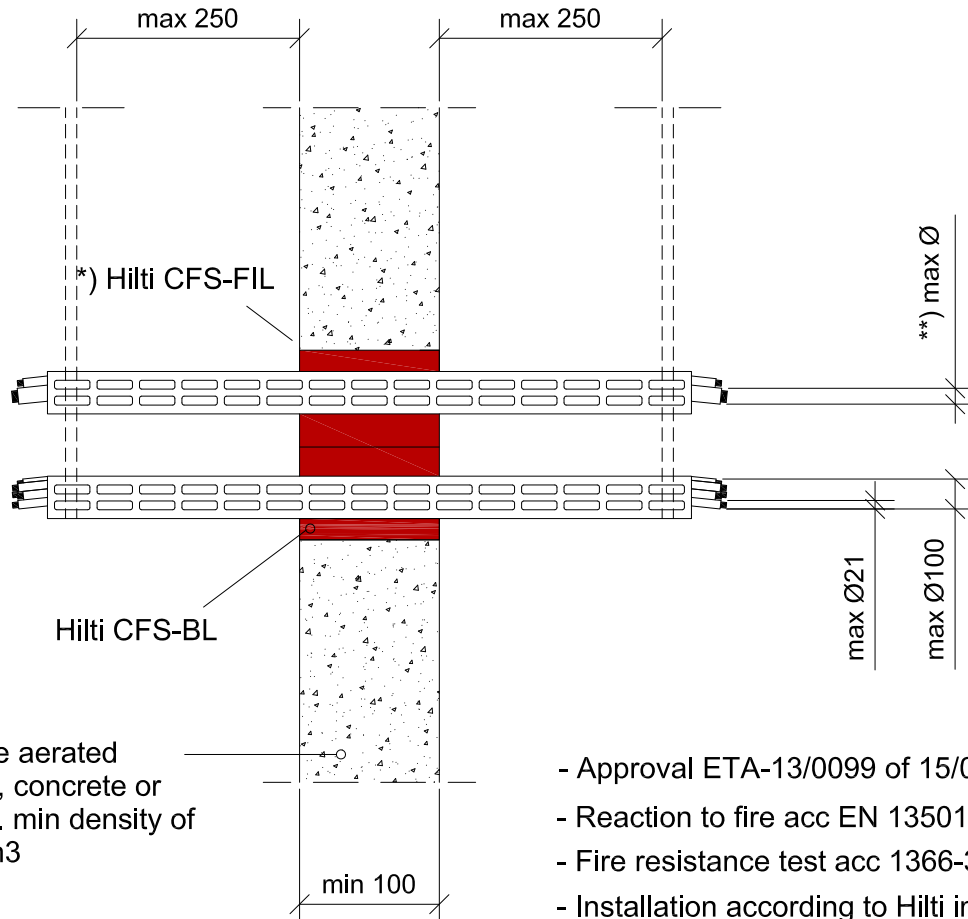
0020\_01

REV  
00

No scale

All units are in millimetres

Fire Rating EI 90



Comprise aerated concrete, concrete or masonry. min density of 600 kg/m<sup>3</sup>

- Approval ETA-13/0099 of 15/04/2013
- Reaction to fire acc EN 13501-1
- Fire resistance test acc 1366-3
- Installation according to Hilti instructions

\*) Annular gap fill material

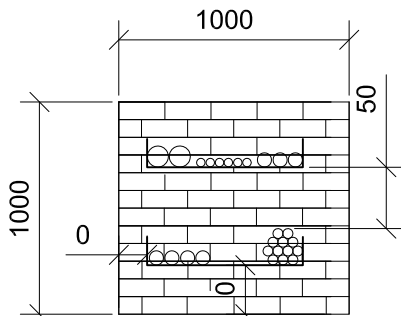
Gaps between services and Hilti Firestop Blocks are filled with Hilti Firestop Filler CFS-FIL, depth 20 mm

Sound Insulation for rigid wall

$D_{n,w} = 54 \text{ dB}$

$R_w = 51 \text{ dB}$

Max. opening (1000x1000) and minimum distance



\*\*) Ø cables

	Filler	Filler+2putty a)
Ø max single sheathed cable	80	80
Ø max single non-sheathed cable	--	24
Ø max cable bundle	100	100
Ø max for a cable in a cable bundle	21	21

a) Two layers of CFS-P BA are wrapped around the services or group of services.



CONTENTS

Cable trays in a rigid wall

ID

CAB-RW-TR-0023

FIRESTOP BLOCK

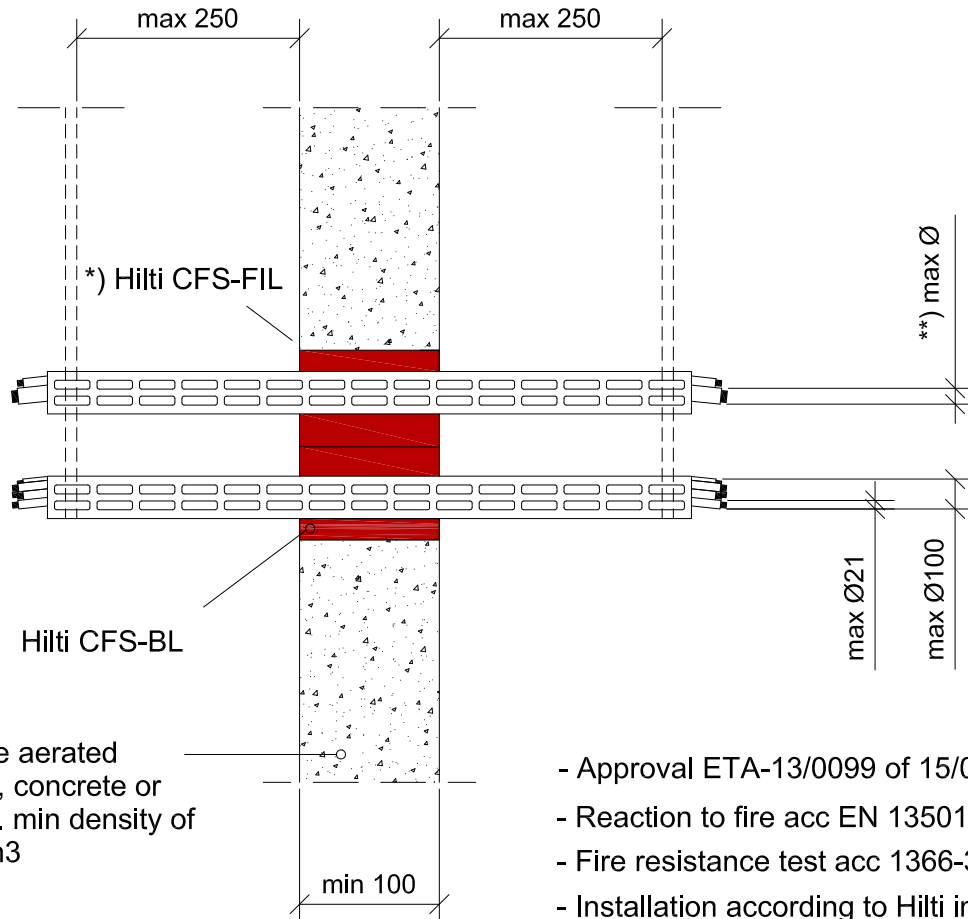
0023\_01

REV  
00

No scale

All units are in milimetres

Fire Rating EI 60



Comprise aerated concrete, concrete or masonry. min density of 600 kg/m<sup>3</sup>

- Approval ETA-13/0099 of 15/04/2013
- Reaction to fire acc EN 13501-1
- Fire resistance test acc 1366-3
- Installation according to Hilti instructions

\*) Annular gap fill material

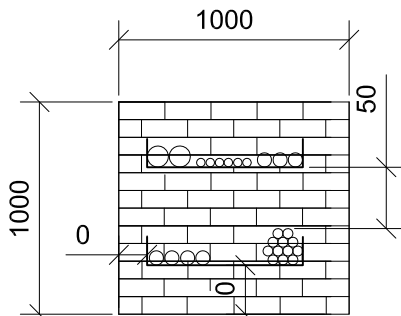
Gaps between services and Hilti Firestop Blocks are filled with Hilti Firestop Filler CFS-FIL, depth 20 mm

Sound Insulation for rigid wall

$D_{n,w} = 54 \text{ dB}$

$R_w = 51 \text{ dB}$

Max. opening (1000x1000) and minimum distance



\*\*) Ø cables

	Filler	Filler+2putty a)
Ø max single sheated cable	80	80
Ø max single non- sheated cable	24	24
Ø max cable bundle	100	100
Ø max for a cable in a cable bundle	21	21

a) Two layers of CFS-P BA are wrapped around the services or group of services.



CONTENTS

Cable trays in a rigid wall

ID

CAB-RW-TR-0026

FIRESTOP BLOCK

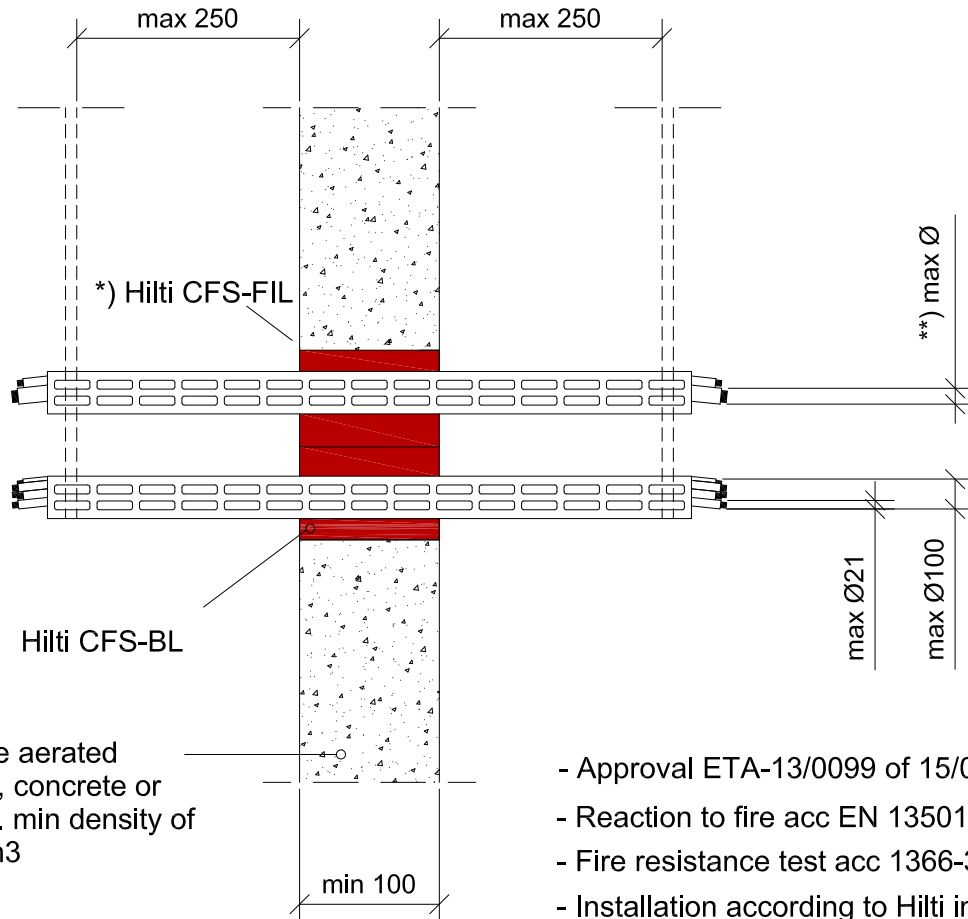
0026\_01

REV  
00

No scale

All units are in millimetres

Fire Rating EI 120



- Approval ETA-13/0099 of 15/04/2013
- Reaction to fire acc EN 13501-1
- Fire resistance test acc 1366-3
- Installation according to Hilti instructions

\*) Annular gap fill material

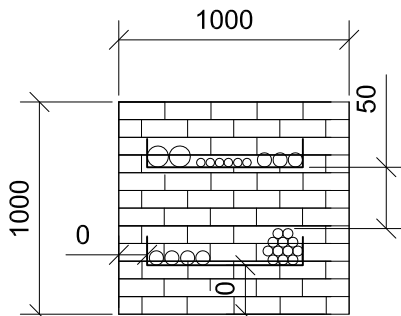
Gaps between services and Hilti Firestop Blocks are filled with Hilti Firestop Filler CFS-FIL, depth 20 mm

Sound Insulation for rigid wall

$D_{n,w} = 54 \text{ dB}$

$R_w = 51 \text{ dB}$

Max. opening (1000x1000) and minimum distance



\*\*) Ø cables

	Filler	Filler+2putty a)
Ø max single sheated cable	---	80
Ø max single non-sheated cable	--	24
Ø max cable bundle	---	100
Ø max for a cable in a cable bundle	---	21

a) Two layers of CFS-P BA are wrapped around the services or group of services.



CONTENTS

Cable trays in a flexible wall

ID

CAB-FW-TR-0030

FIRESTOP BLOCK

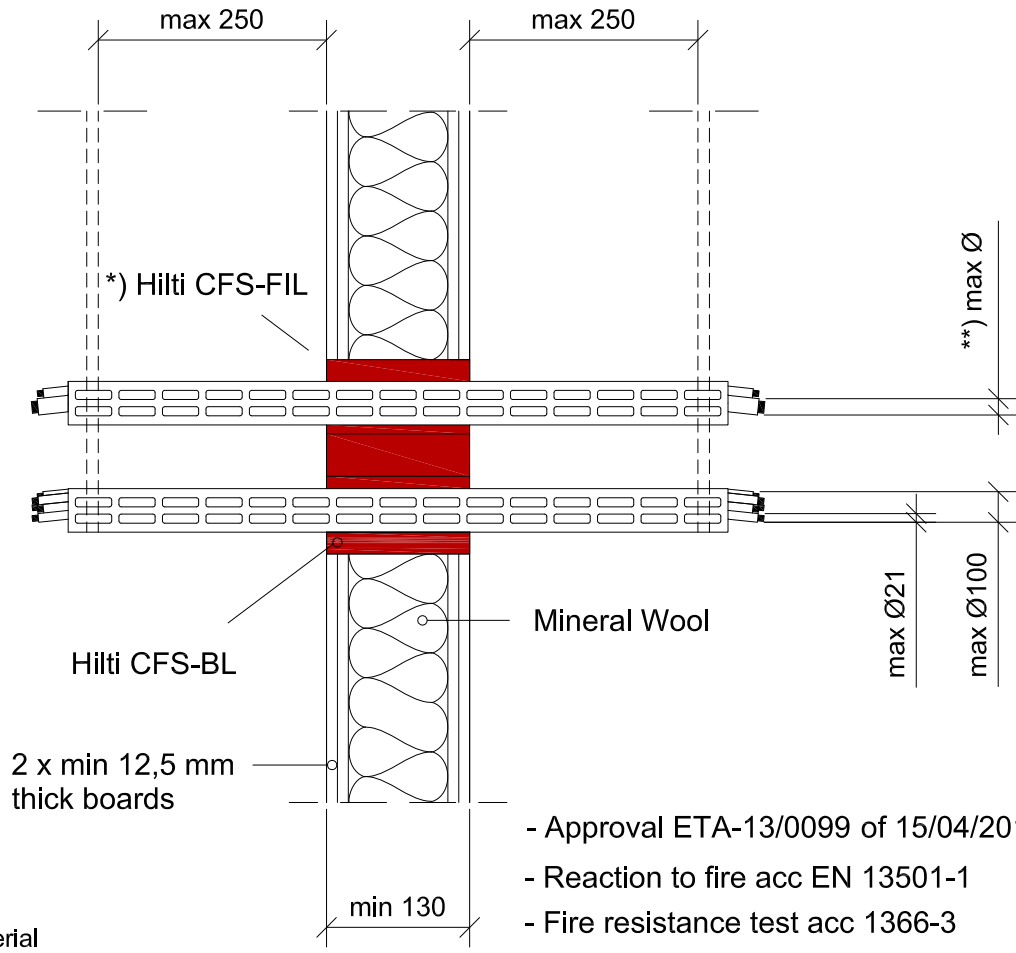
0030\_01

REV 00

No scale

All units are in millimetres

Fire Rating EI 90



- Approval ETA-13/0099 of 15/04/2013
- Reaction to fire acc EN 13501-1
- Fire resistance test acc 1366-3
- Installation according to Hilti instructions

\*) Annular gap fill material

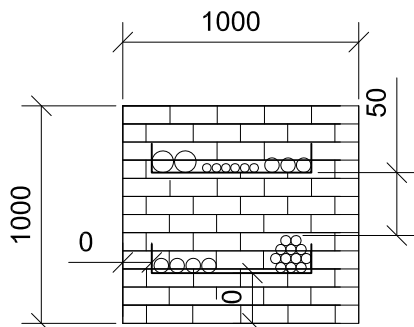
Gaps between services and Hilti Firestop Blocks are filled with Hilti Firestop Filler CFS-FIL, depth 20 mm

Sound Insulation for flexible wall

$$D_{n,w} = 54 \text{ dB}$$

$$R_w = 51 \text{ dB}$$

Max. opening (1000x1000) and minimum distance



\*\*) Ø cables

	Filler	Filler+1putty a)	Filler+2putty b)
Ø max single sheathed cable	80	80	80
Ø max single non- sheathed cable	---	24	24
Ø max cable bundle	100	100	100
Ø max for a cable in a cable bundle	21	21	21

a) One layer of CFS-P BA are wrapped around the services or group of services.

b) Two layers of CFS-P BA are wrapped around the services or group of services.





CONTENTS

Cable trays in a flexible wall

ID

CAB-FW-TR-0033

FIRESTOP BLOCK

0033\_01

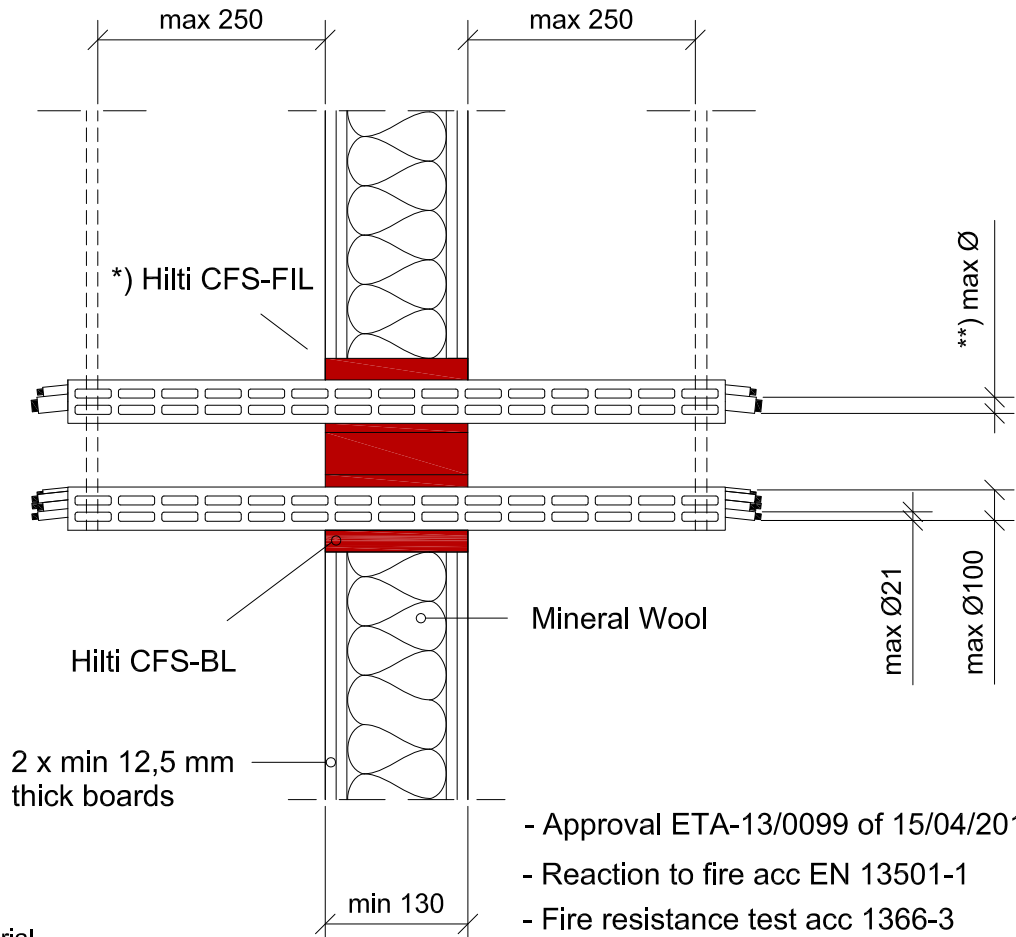
REV

00

No scale

All units are in millimetres

Fire Rating EI 60



\*) Annular gap fill material

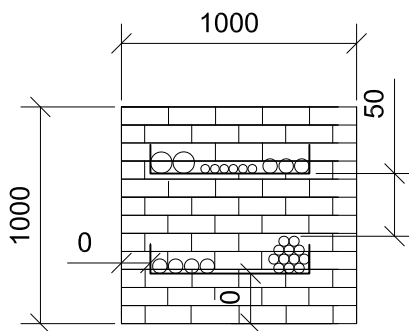
Gaps between services and Hilti Firestop Blocks are filled with Hilti Firestop Filler CFS-FIL, depth 20 mm

- Approval ETA-13/0099 of 15/04/2013
- Reaction to fire acc EN 13501-1
- Fire resistance test acc 1366-3
- Installation according to Hilti instructions

Sound Insulation for flexible wall

$D_{n,w} = 54 \text{ dB}$   
 $R_w = 51 \text{ dB}$

Max. opening (1000x1000) and minimum distance



\*\*) Ø cables

	Filler	Filler+1putty a)	Filler+2putty b)
Ø max single sheated cable	80	80	80
Ø max single non- sheated cable	24	24	24
Ø max cable bundle	100	100	100
Ø max for a cable in a cable bundle	21	21	21

- a) One layer of CFS-P BA are wrapped around the services or group of services.
- b) Two layers of CFS-P BA are wrapped around the services or group of services.



CONTENTS

Cable trays in a flexible wall

ID

CAB-FW-TR-0036

FIRESTOP BLOCK

0036\_01

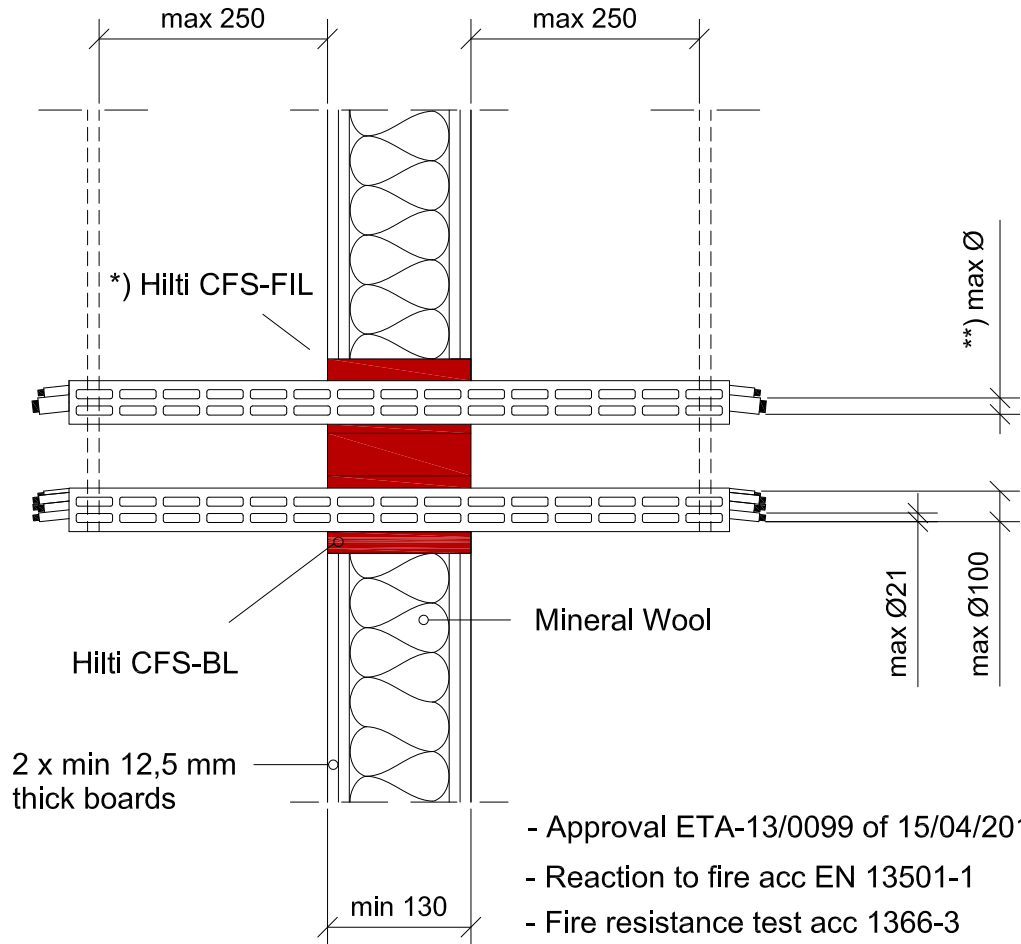
REV

00

No scale

All units are in millimetres

Fire Rating EI 120



- Approval ETA-13/0099 of 15/04/2013
- Reaction to fire acc EN 13501-1
- Fire resistance test acc 1366-3
- Installation according to Hilti instructions

\*) Annular gap fill material

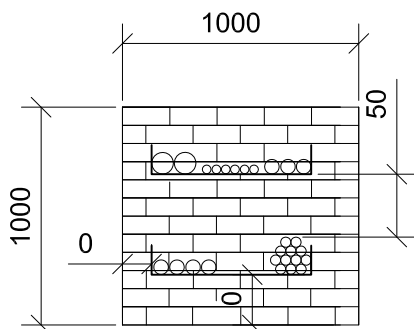
Gaps between services and Hilti Firestop Blocks are filled with Hilti Firestop Filler CFS-FIL, depth 20 mm

Sound Insulation for flexible wall

$D_{n,w} = 54 \text{ dB}$

$R_w = 51 \text{ dB}$

Max. opening (1000x1000) and minimum distance



\*\*) Ø cables

	Filler	Filler+1putty a)	Filler+2putty b)
Ø max single sheated cable	---	50	80
Ø max single non-sheated cable	---	---	24
Ø max cable bundle	100	100	100
Ø max for a cable in a cable bundle	21	21	21

- a) One layer of CFS-P BA are wrapped around the services or group of services.
- b) Two layers of CFS-P BA are wrapped around the services or group of services.



CONTENTS

Cable trays in a rigid wall

ID

CAB-RW-TR-0039

FIRESTOP BLOCK

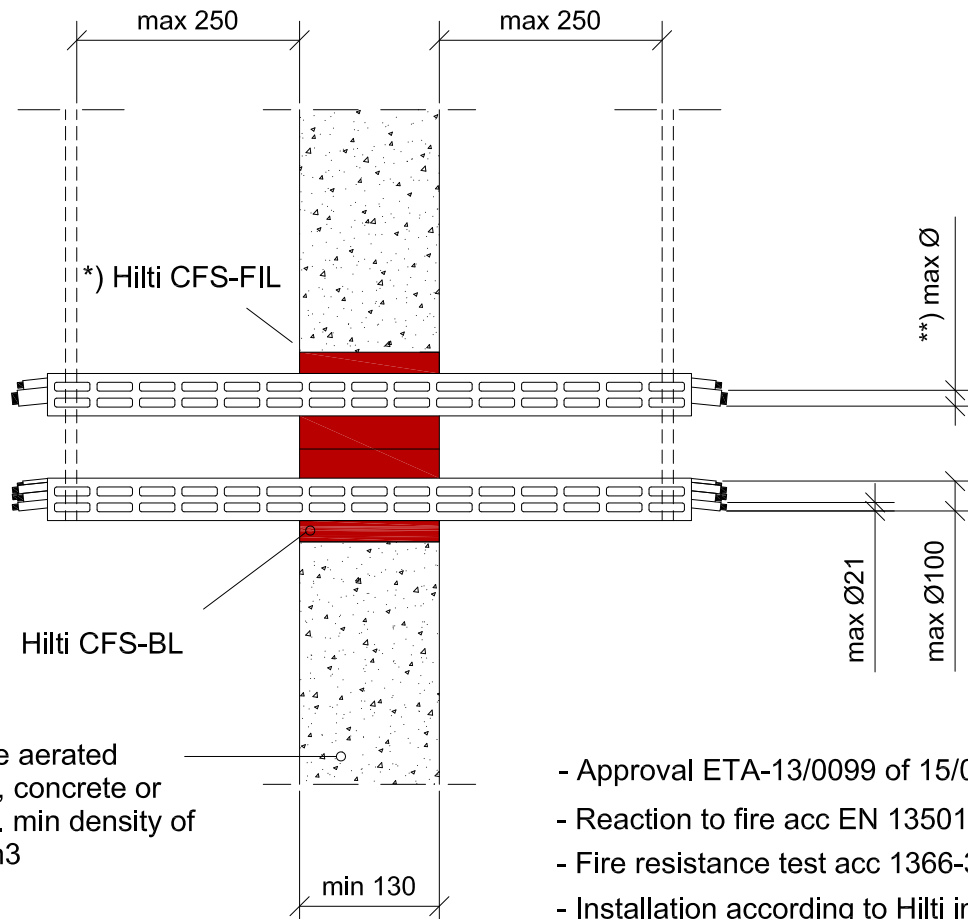
0039\_01

REV  
00

No scale

All units are in millimetres

Fire Rating EI 90



Comprise aerated concrete, concrete or masonry. min density of 600 kg/m<sup>3</sup>

- Approval ETA-13/0099 of 15/04/2013
- Reaction to fire acc EN 13501-1
- Fire resistance test acc 1366-3
- Installation according to Hilti instructions

\*) Annular gap fill material

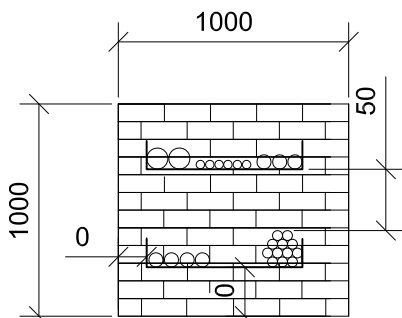
Gaps between services and Hilti Firestop Blocks are filled with Hilti Firestop Filler CFS-FIL, depth 20 mm

Sound Insulation for rigid wall

$D_{n,w} = 54 \text{ dB}$

$R_w = 51 \text{ dB}$

Max. opening (1000x1000) and minimum distance



\*\*) Ø cables

	Filler	Filler+1putty a)	Filler+2putty b)
Ø max single sheated cable	80	80	80
Ø max single non- sheated cable	---	24	24
Ø max cable bundle	100	100	100
Ø max for a cable in a cable bundle	21	21	21

- a) One layer of CFS-P BA are wrapped around the services or group of services.  
b) Two layers of CFS-P BA are wrapped around the services or group of services.



CONTENTS

Cable trays in a rigid wall

ID

CAB-RW-TR-0042

FIRESTOP BLOCK

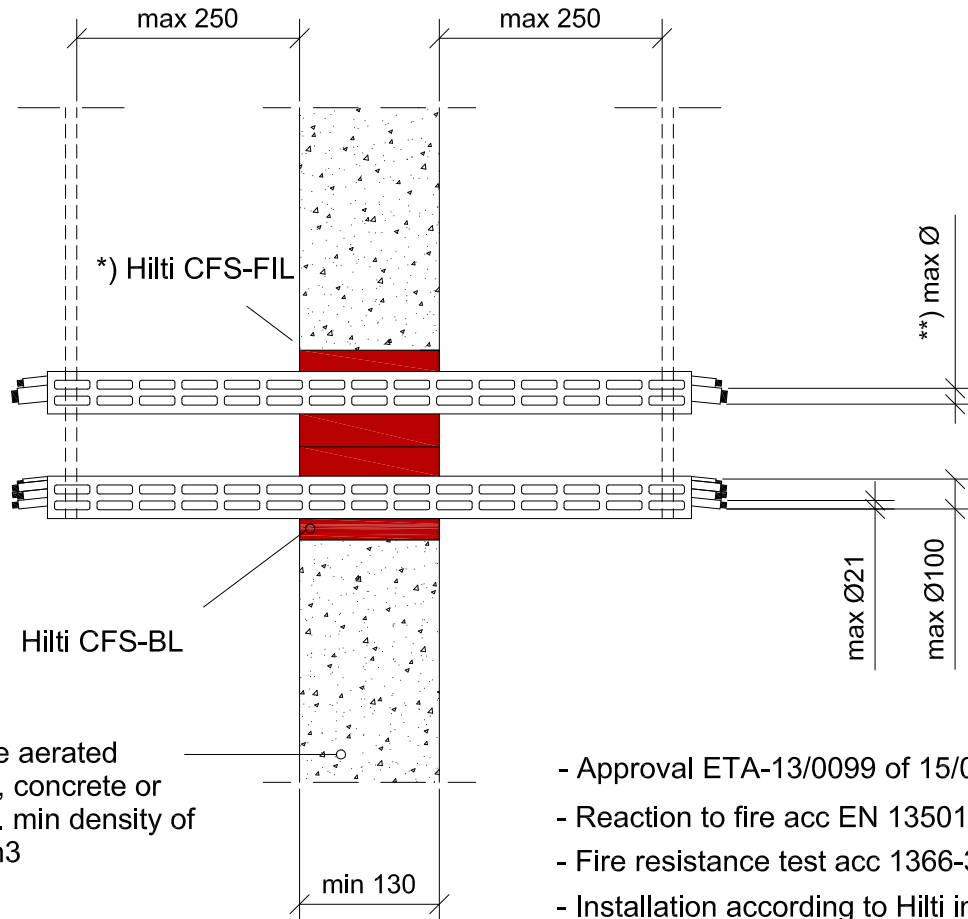
0042\_01

REV  
00

No scale

All units are in millimetres

Fire Rating EI 60



- Approval ETA-13/0099 of 15/04/2013
- Reaction to fire acc EN 13501-1
- Fire resistance test acc 1366-3
- Installation according to Hilti instructions

\*) Annular gap fill material

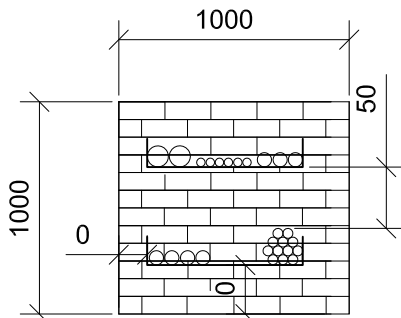
Gaps between services and Hilti Firestop Blocks are filled with Hilti Firestop Filler CFS-FIL, depth 20 mm

Sound Insulation for rigid wall

$D_{n,w} = 54 \text{ dB}$

$R_w = 51 \text{ dB}$

Max. opening (1000x1000) and minimum distance



\*\*) Ø cables

	Filler	Filler+1putty a)	Filler+2putty b)
Ø max single sheated cable	80	80	80
Ø max single non- sheated cable	24	24	24
Ø max cable bundle	100	100	100
Ø max for a cable in a cable bundle	21	21	21

- a) One layer of CFS-P BA are wrapped around the services or group of services.  
b) Two layers of CFS-P BA are wrapped around the services or group of services.



CONTENTS

Cable trays in a rigid wall

ID

CAB-RW-TR-0045

FIRESTOP BLOCK

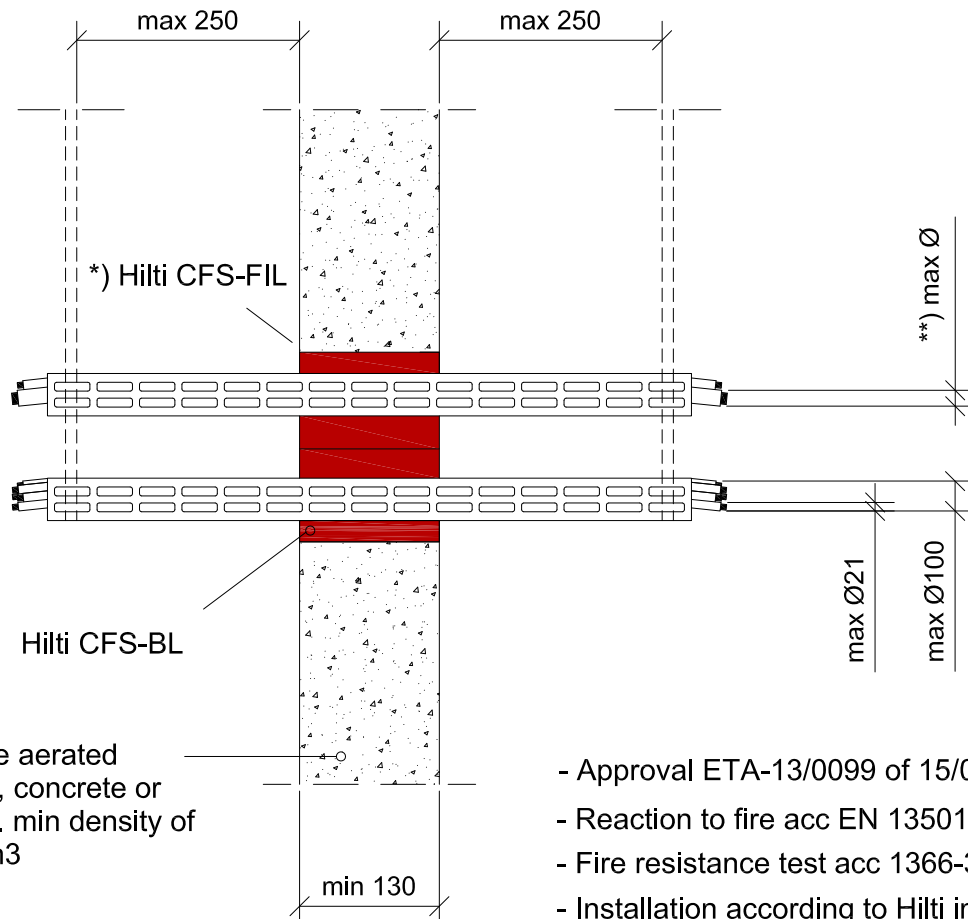
0045\_01

REV  
00

No scale

All units are in millimetres

Fire Rating EI 120



Comprise aerated concrete, concrete or masonry. min density of 600 kg/m<sup>3</sup>

- Approval ETA-13/0099 of 15/04/2013
- Reaction to fire acc EN 13501-1
- Fire resistance test acc 1366-3
- Installation according to Hilti instructions

\*) Annular gap fill material

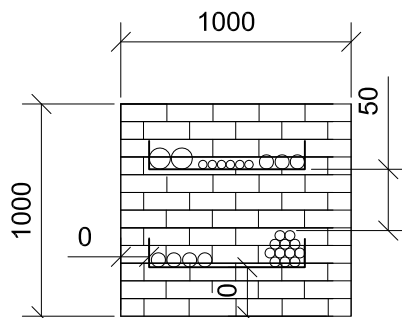
Gaps between services and Hilti Firestop Blocks are filled with Hilti Firestop Filler CFS-FIL, depth 20 mm

Sound Insulation for rigid wall

$D_{n,w} = 54 \text{ dB}$

$R_w = 51 \text{ dB}$

Max. opening (1000x1000) and minimum distance



\*\*) Ø cables

	Filler	Filler+1putty a)	Filler+2putty b)
Ø max single sheated cable	--	50	80
Ø max single non- sheated cable	---	--	24
Ø max cable bundle	100	100	100
Ø max for a cable in a cable bundle	21	21	21

- a) One layer of CFS-P BA are wrapped around the services or group of services.  
b) Two layers of CFS-P BA are wrapped around the services or group of services.



CONTENTS

Cable trays in a rigid floor

ID

CAB-RF-TR-0048

FIRESTOP BLOCK

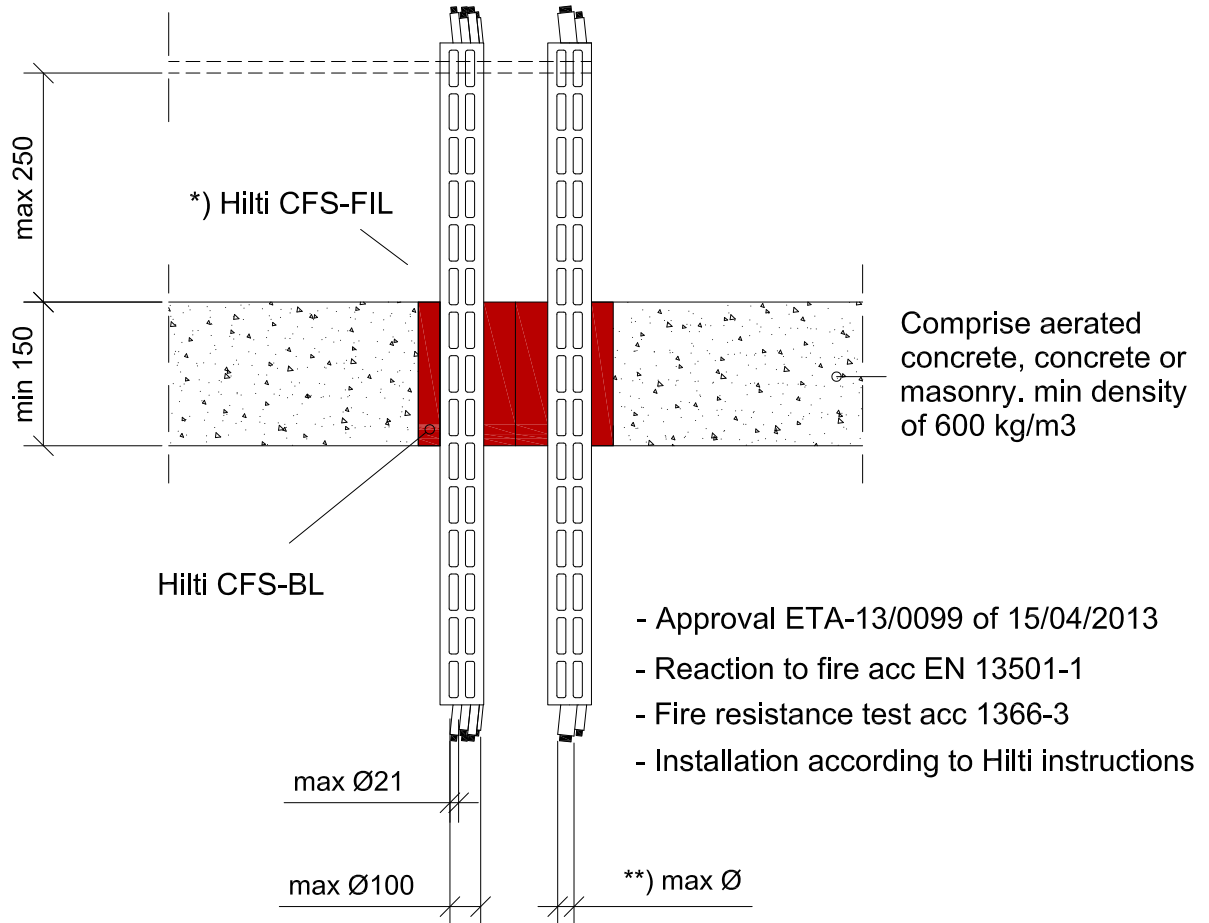
0048\_01

REV  
00

No scale

All units are in millimetres

Fire Rating EI 90



\*) Annular gap fill material

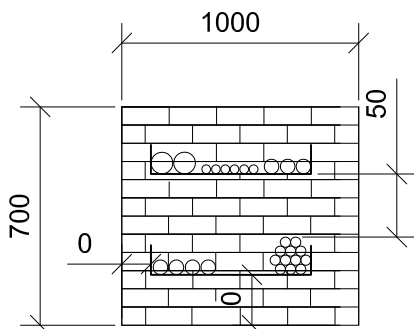
Gaps between services and Hilti Firestop Blocks are filled with Hilti Firestop Filler CFS-FIL, depth 20 mm

Sound Insulation for rigid floor

$D_{n,w} = 54 \text{ dB}$

$R_w = 51 \text{ dB}$

Max. opening (1000x700) or an area of 7000 cm<sup>2</sup>. Minimum distance:



\*\*) Ø cables

**) Ø cables	Filler	Filler+2putty a)
Ø max single sheathed cable	80	80
Ø max single non- sheathed cable	---	24
Ø max cable bundle	100	100
Ø max for a cable in a cable bundle	21	21

a) Two layers of CFS-P BA are wrapped around the services or group of services.



CONTENTS

Cable trays in a rigid floor

ID

CAB-RF-TR-0051

FIRESTOP BLOCK

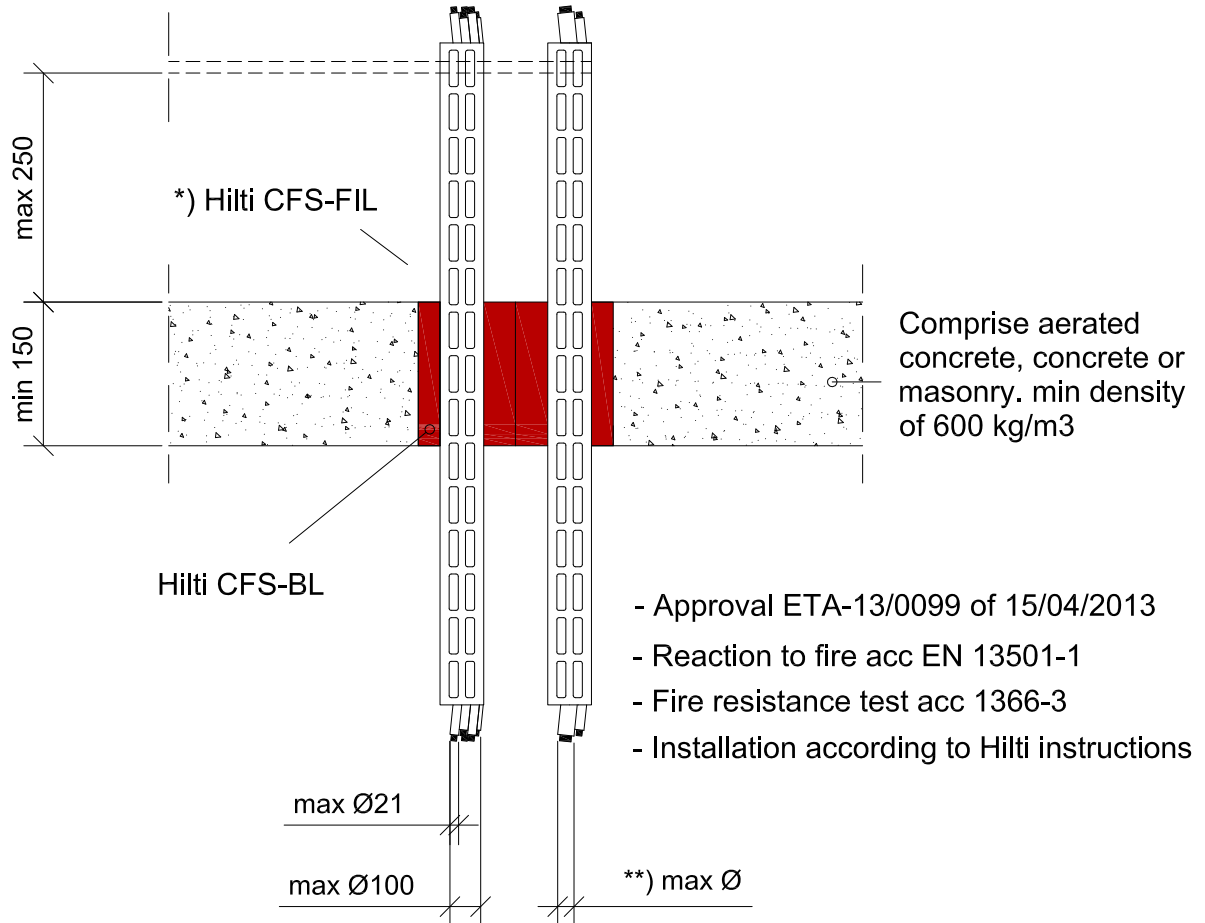
0051\_01

REV 00

No scale

All units are in millimetres

Fire Rating EI 60



\*) Annular gap fill material

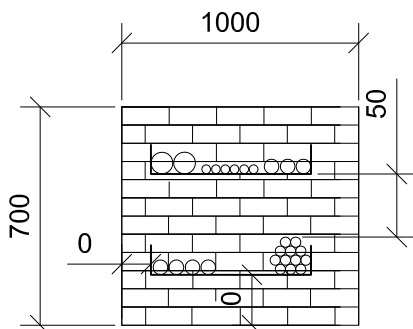
Gaps between services and Hilti Firestop Blocks are filled with Hilti Firestop Filler CFS-FIL, depth 20 mm

Sound Insulation for rigid floor

$D_{n,w} = 54 \text{ dB}$

$R_w = 51 \text{ dB}$

Max. opening (1000x700) or an area of 7000 cm<sup>2</sup>. Minimum distance:



\*\*) Ø cables

	Filler	Filler+2putty a)
Ø max single sheathed cable	80	80
Ø max single non- sheathed cable	24	24
Ø max cable bundle	100	100
Ø max for a cable in a cable bundle	21	21

a) Two layers of CFS-P BA are wrapped around the services or group of services.



CONTENTS

Cable trays in a rigid floor

ID

CAB-RF-TR-0054

FIRESTOP BLOCK

0054\_01

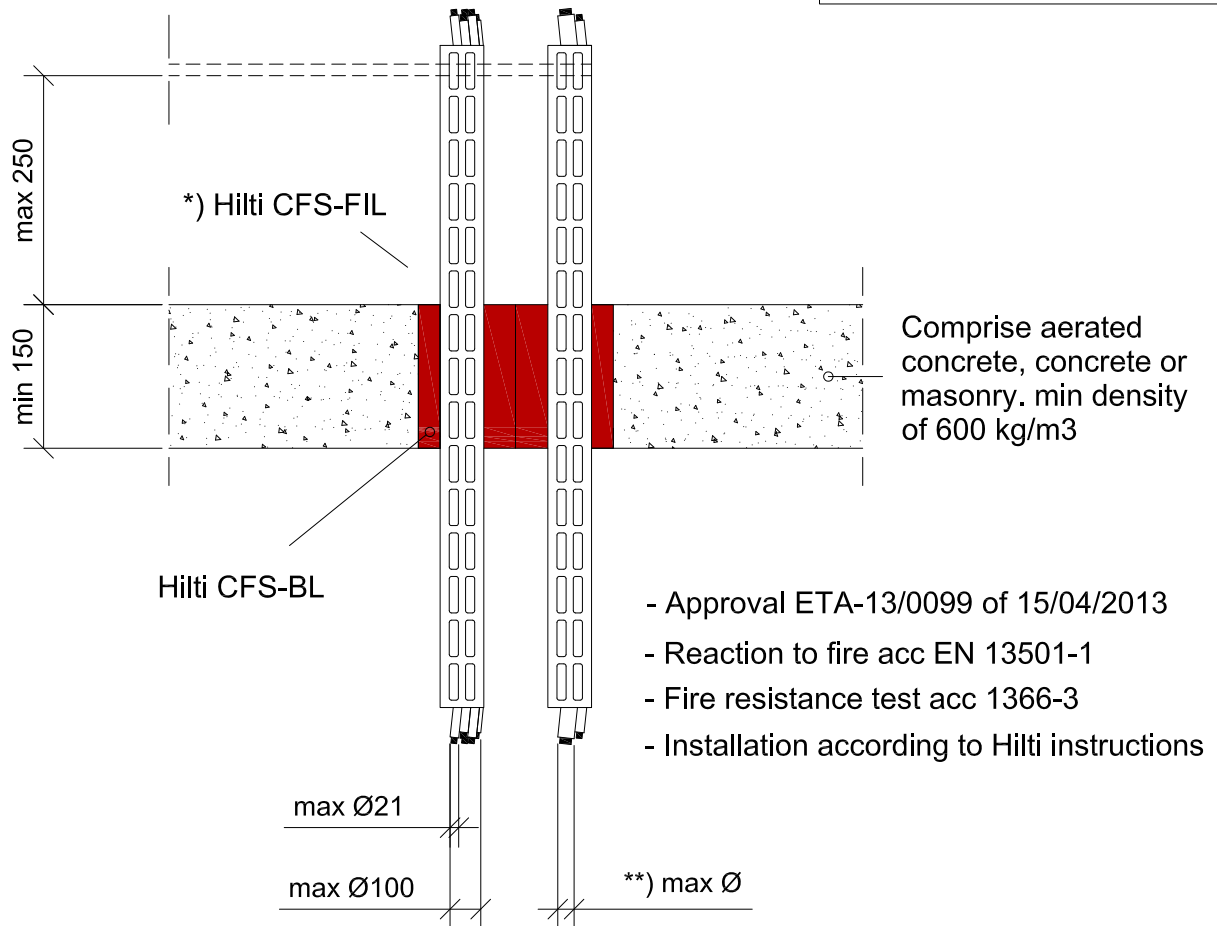
REV

00

No scale

All units are in millimetres

Fire Rating EI 120



\*) Annular gap fill material

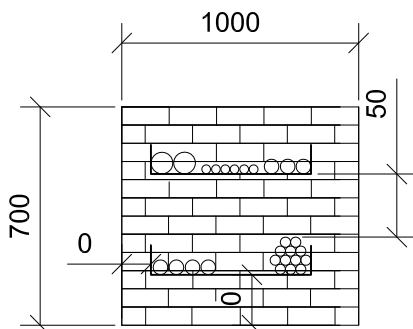
Gaps between services and Hilti Firestop Blocks are filled with Hilti Firestop Filler CFS-FIL, depth 20 mm

Sound Insulation for rigid floor

$D_{n,w} = 54 \text{ dB}$

$R_w = 51 \text{ dB}$

Max. opening (1000x700) or an area of 7000 cm<sup>2</sup>. Minimum distance:



\*\*) Ø cables

**) Ø cables	Filler	Filler+2putty a)
Ø max single sheathed cable	---	80
Ø max single non- sheathed cable	---	24
Ø max cable bundle	---	100
Ø max for a cable in a cable bundle	---	21

a) Two layers of CFS-P BA are wrapped around the services or group of services.