

## Schémas d'application pour la brique coupe-feu CFS-BL



### Applications pour câbles multiples (câbles unitaires, botte de câbles, chemin de câbles)

- |  |                      |
|--|----------------------|
| • Application en cloison épaisseur 100 mm (dimensions maximum de l'ouverture 1000 x 1000)      | CAB-FW-MT-0011/14/17 |
| • Application en cloison épaisseur 130 mm (dimensions maximum de l'ouverture 1000 x 1000)      | CAB-FW-MT-0031/34/37 |
| • Application en voile rigide épaisseur 100 mm (dimensions maximum de l'ouverture 1000 x 1000) | CAB-RW-MT-0021/24/27 |
| • Application en voile rigide épaisseur 130 mm (dimensions maximum de l'ouverture 1000 x 1000) | CAB-RW-MT-0040/43/46 |
| • Application en dalle rigide épaisseur 150 mm (dimensions maximum de l'ouverture 1000 x 700)  | CAB-RF-MT-0049/52/5  |

\*) Tous les schémas sont également disponibles sur demande en format DWG pour faciliter l'insertion sur des plans.



CONTENTS

Multiple in a flexible wall

ID

CAB-FW-MT-0011

FIRESTOP BLOCK

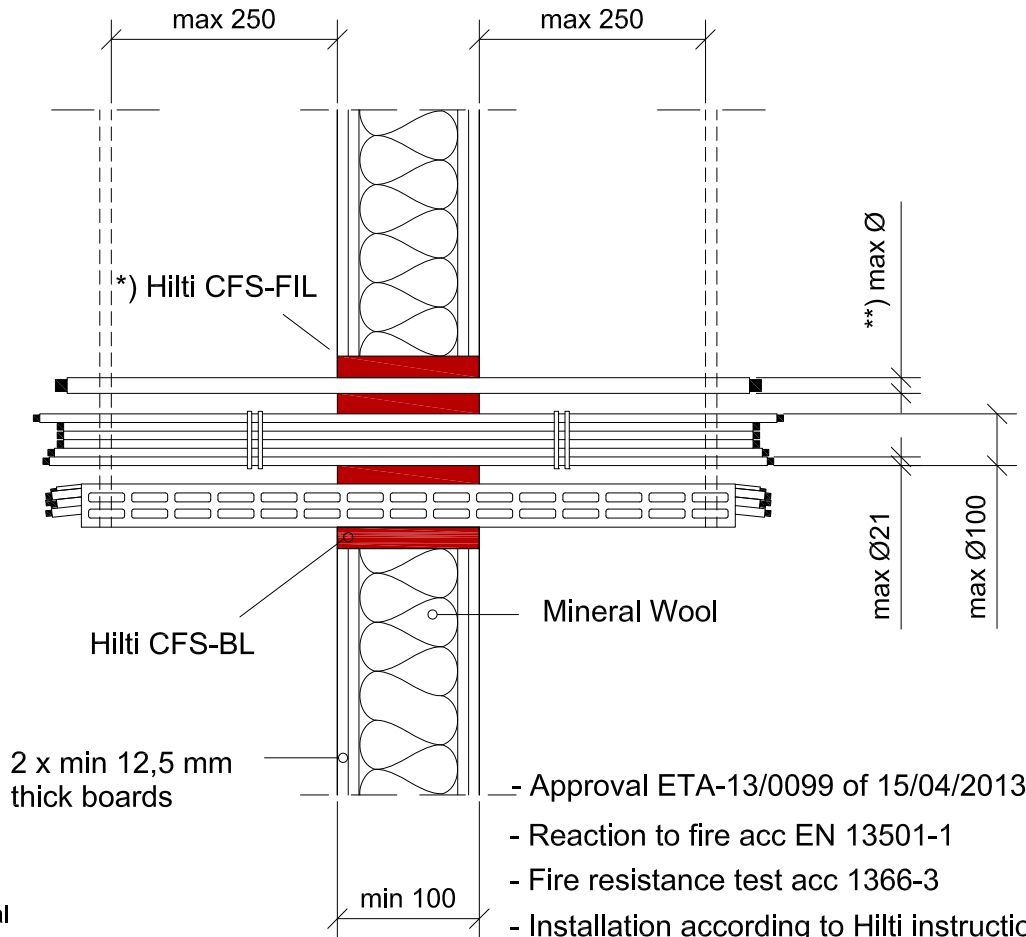
0011\_01

REV  
00

No scale

All units are in millimetres

Fire Rating EI 90



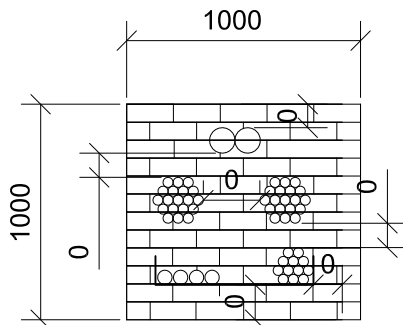
\*) Annular gap fill material

Gaps between services and Hilti Firestop Blocks are filled with Hilti Firestop Filler CFS-FIL, depth 20 mm

Sound Insulation for flexible wall

$D_{n,w} = 54 \text{ dB}$   
 $R_w = 51 \text{ dB}$

Max. opening (1000x1000) and minimum distance



\*\*) Ø cables

	Filler	Filler+2putty a)
Ø max single sheated cable	80	80
Ø max single non- sheated cable	---	24
Ø max cable bundle	100	100
Ø max for a cable in a cable bundle	21	21

a) Two layers of CFS-P BA are wrapped around the services or group of services.



CONTENTS

Multiple in a flexible wall

ID

CAB-FW-MT-0014

FIRESTOP BLOCK

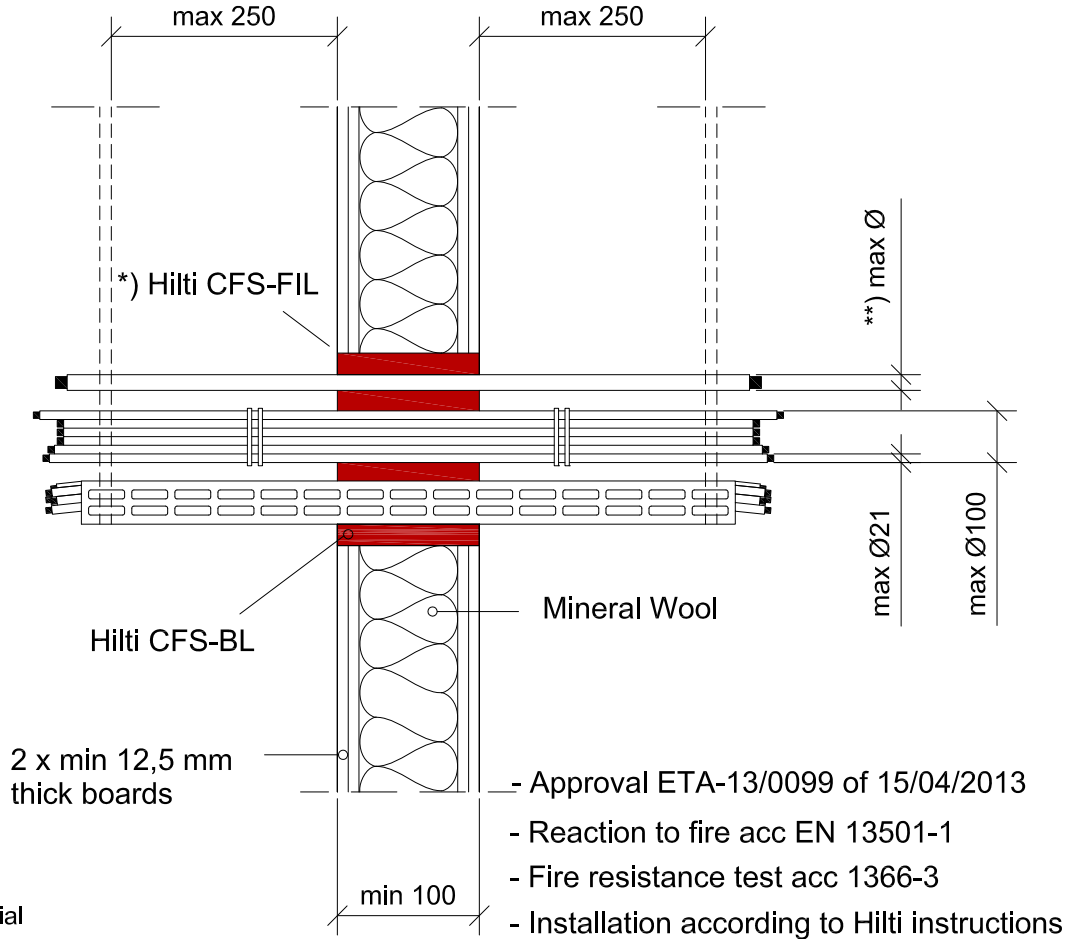
0014\_01

REV  
00

No scale

All units are in millimetres

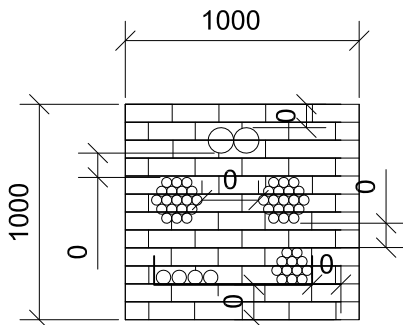
Fire Rating EI 60



\*) Annular gap fill material

Gaps between services and Hilti Firestop Blocks are filled with Hilti Firestop Filler CFS-FIL, depth 20 mm

Max. opening (1000x1000) and minimum distance



Sound Insulation for flexible wall

$D_{n,w} = 54 \text{ dB}$   
 $R_w = 51 \text{ dB}$

\*\*) Ø cables

	Filler	Filler+2putty a)
Ø max single sheated cable	80	80
Ø max single non- sheated cable	24	24
Ø max cable bundle	100	100
Ø max for a cable in a cable bundle	21	21

a) Two layers of CFS-P BA are wrapped around the services or group of services.



CONTENTS

Multiple in a flexible wall

ID

CAB-FW-MT-0017

FIRESTOP BLOCK

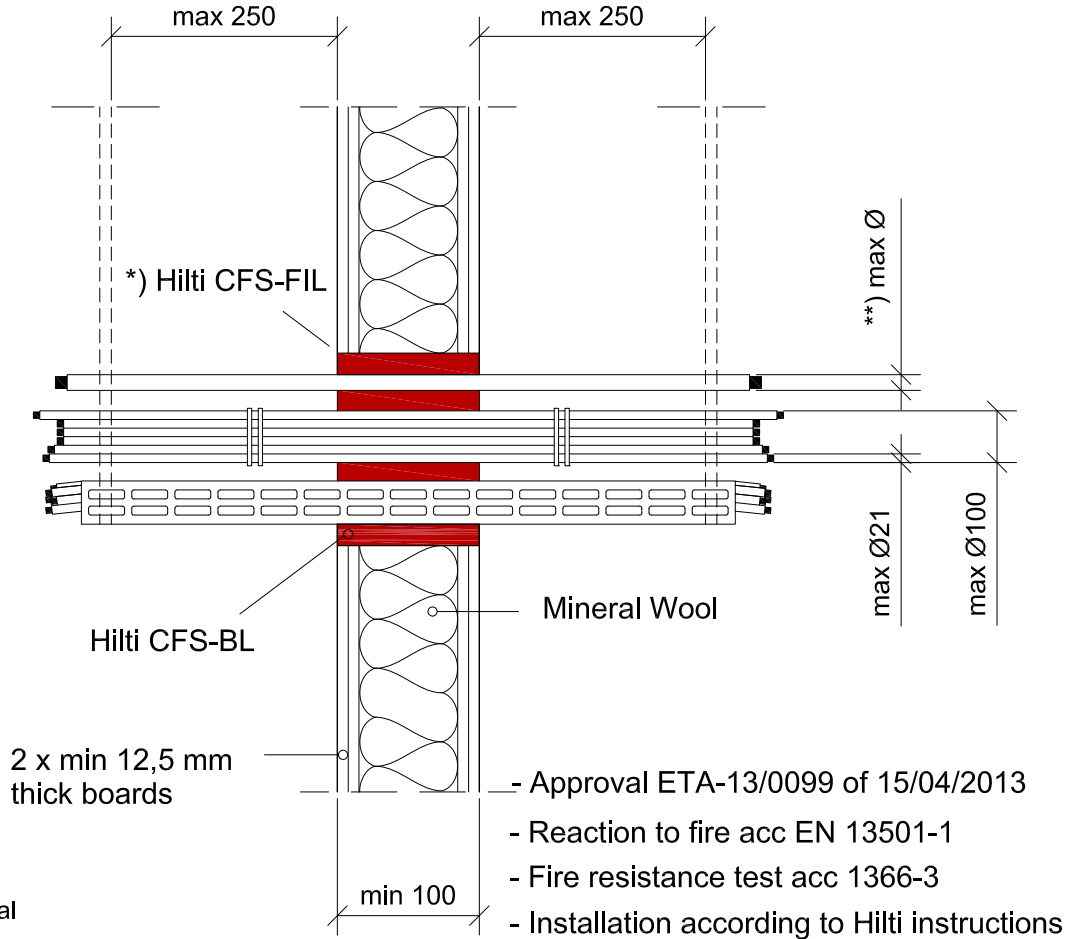
0017\_01

REV  
00

No scale

All units are in milimetres

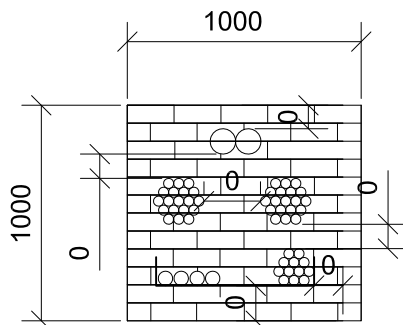
Fire Rating EI 120



\*) Annular gap fill material

Gaps between services and Hilti Firestop Blocks are filled with Hilti Firestop Filler CFS-FIL, depth 20 mm

Max. opening (1000x1000) and minimum distance



Sound Insulation for flexible wall

$D_{n,w} = 54 \text{ dB}$   
 $R_w = 51 \text{ dB}$

\*\*) Ø cables

	Filler	Filler+2putty a)
Ø max single sheathed cable	---	80
Ø max single non- sheathed cable	---	24
Ø max cable bundle	---	100
Ø max for a cable in a cable bundle	---	21

a) Two layers of CFS-P BA are wrapped around the services or group of services.



CONTENTS

Multiple in a rigid wall

ID

CAB-RW-MT-0021

FIRESTOP BLOCK

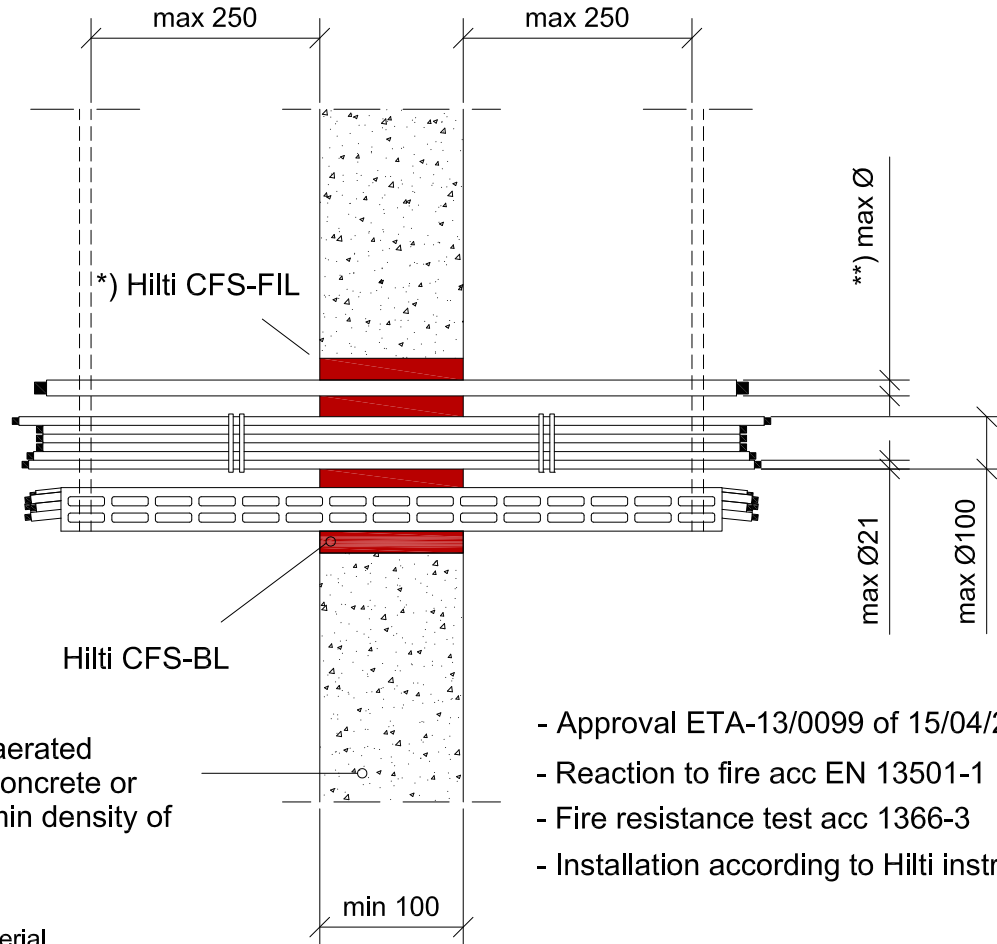
0021\_01

REV 00

No scale

All units are in millimetres

Fire Rating EI 90



Comprise aerated concrete, concrete or masonry. min density of 600 kg/m<sup>3</sup>

- Approval ETA-13/0099 of 15/04/2013
- Reaction to fire acc EN 13501-1
- Fire resistance test acc 1366-3
- Installation according to Hilti instructions

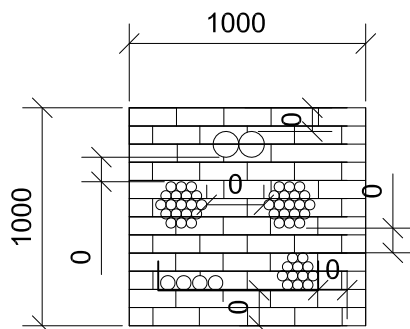
\*) Annular gap fill material

Gaps between services and Hilti Firestop Blocks are filled with Hilti Firestop Filler CFS-FIL, depth 20 mm

Sound Insulation for flexible wall

$D_{n,w} = 54 \text{ dB}$   
 $R_w = 51 \text{ dB}$

Max. opening (1000x1000) and minimum distance



\*\*) Ø cables

	Filler	Filler+2putty a)
Ø max single sheated cable	80	80
Ø max single non- sheated cable	---	24
	100	100
Ø max for a cable in a cable bundle	21	21

a) Two layers of CFS-P BA are wrapped around the services or group of services.



CONTENTS

Multiple in a rigid wall

ID

CAB-RW-MT-0024

FIRESTOP BLOCK

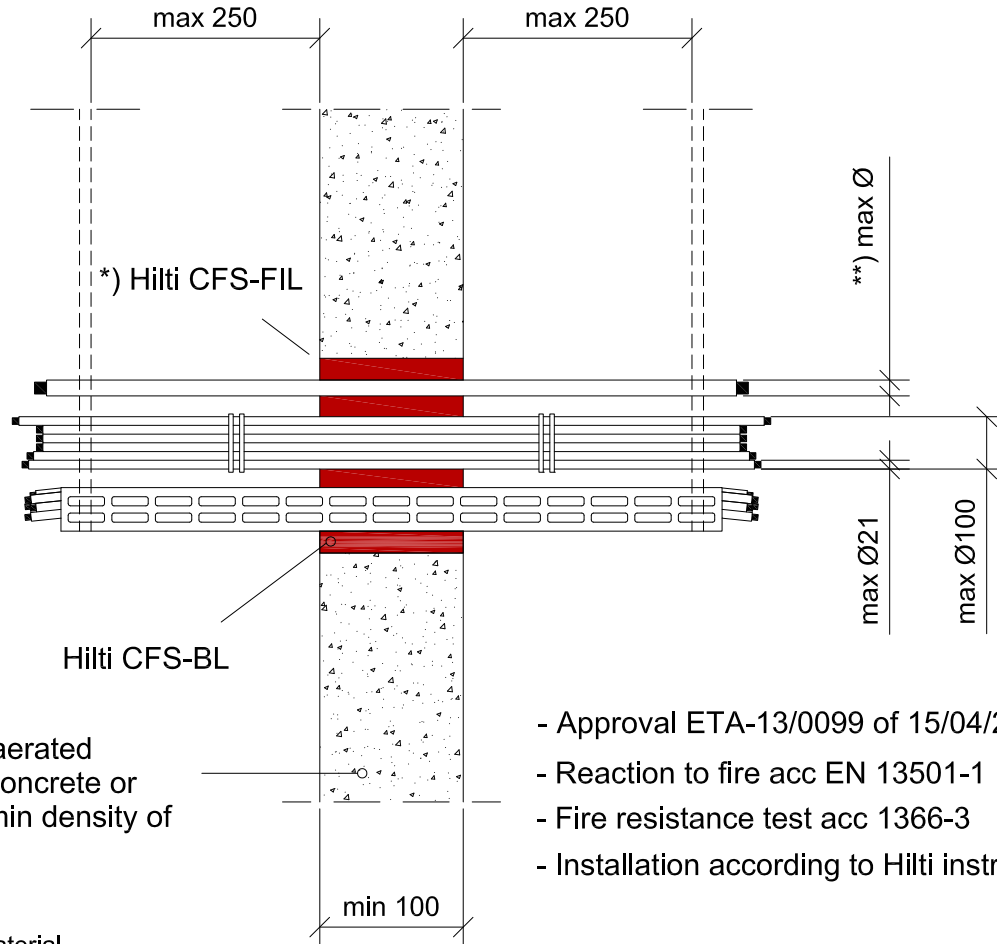
0024\_01

REV 00

No scale

All units are in millimetres

Fire Rating EI 60



Comprise aerated concrete, concrete or masonry. min density of 600 kg/m<sup>3</sup>

- Approval ETA-13/0099 of 15/04/2013
- Reaction to fire acc EN 13501-1
- Fire resistance test acc 1366-3
- Installation according to Hilti instructions

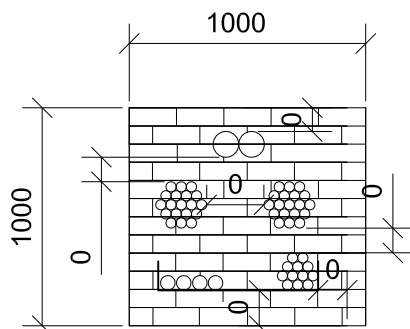
\*) Annular gap fill material

Gaps between services and Hilti Firestop Blocks are filled with Hilti Firestop Filler CFS-FIL, depth 20 mm

Sound Insulation for flexible wall

$D_{n,w} = 54 \text{ dB}$   
 $R_w = 51 \text{ dB}$

Max. opening (1000x1000) and minimum distance



	Filler	Filler+2putty a)
Ø max single sheated cable	80	80
Ø max single non- sheated cable	24	24
Ø max cable bundle	100	100
Ø max for a cable in a cable bundle	21	21

a) Two layers of CFS-P BA are wrapped around the services or group of services.



CONTENTS

Multiple in a rigid wall

ID

CAB-RW-MT-0027

FIRESTOP BLOCK

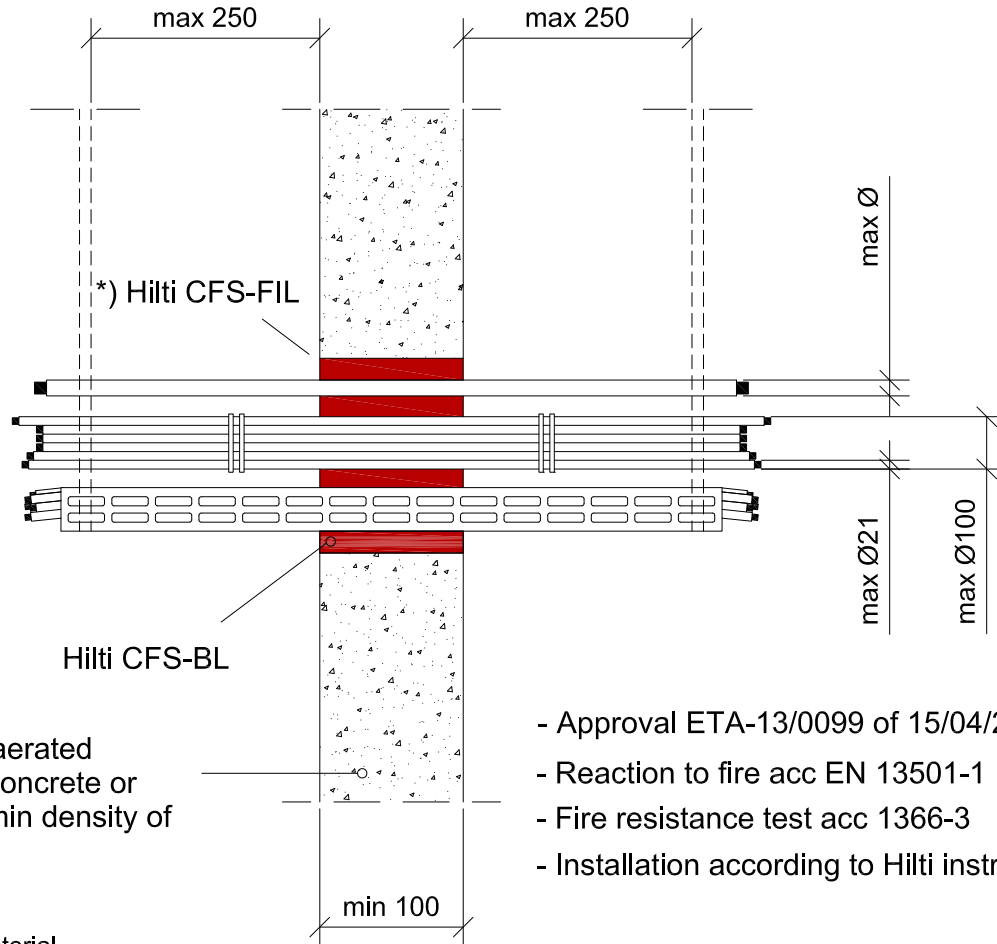
0027\_01

REV 00

No scale

All units are in millimetres

Fire Rating EI 120



Comprise aerated concrete, concrete or masonry. min density of 600 kg/m<sup>3</sup>

- Approval ETA-13/0099 of 15/04/2013
- Reaction to fire acc EN 13501-1
- Fire resistance test acc 1366-3
- Installation according to Hilti instructions

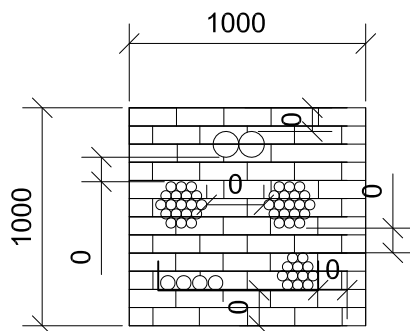
\*) Annular gap fill material

Gaps between services and Hilti Firestop Blocks are filled with Hilti Firestop Filler CFS-FIL, depth 20 mm

Sound Insulation for flexible wall

$D_{n,w} = 54 \text{ dB}$   
 $R_w = 51 \text{ dB}$

Max. opening (1000x1000) and minimum distance



	Filler	Filler+2putty a)
Ø max single sheated cable	---	80
Ø max single non- sheated cable	---	24
Ø max cable bundle	---	100
Ø max for a cable in a cable bundle	---	21

a) Two layers of CFS-P BA are wrapped around the services or group of services.



CONTENTS

Multiple in a flexible wall

ID

CAB-FW-MT-0031

FIRESTOP BLOCK

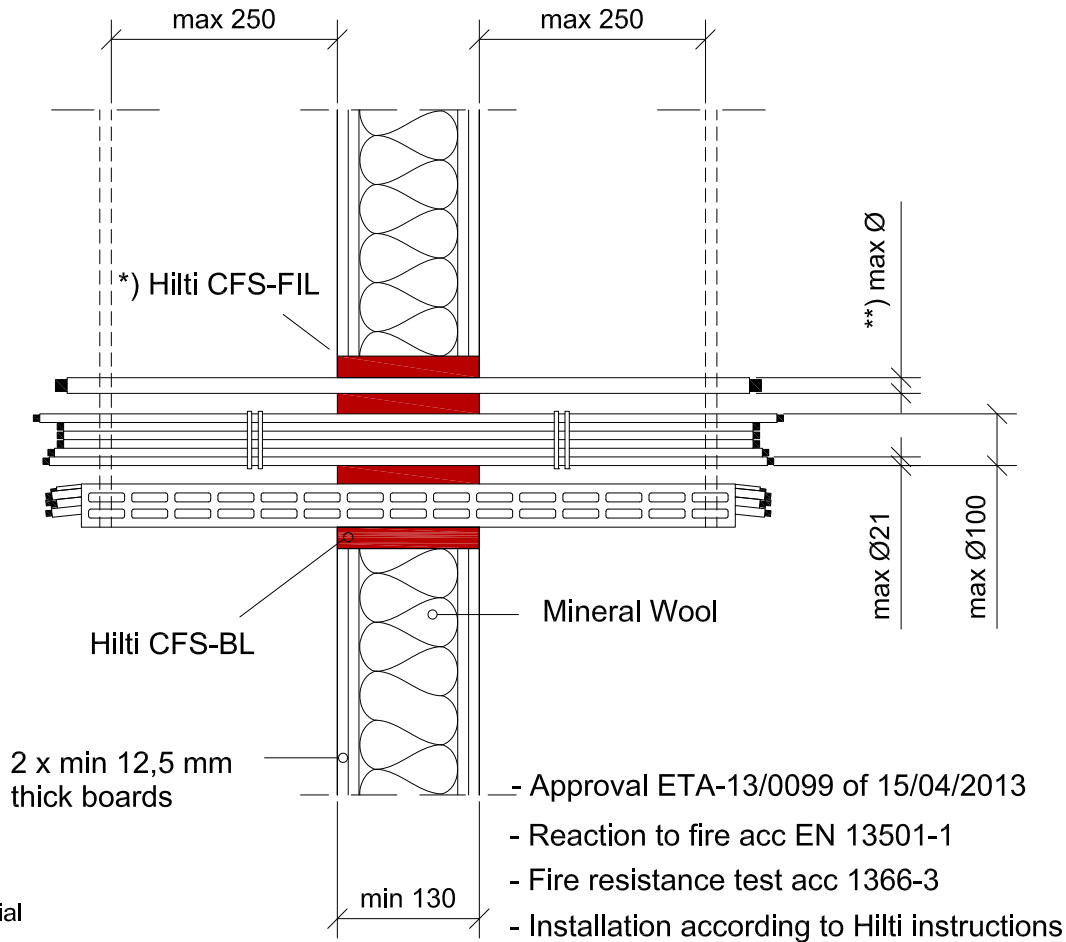
0031\_01

REV 00

No scale

All units are in millimetres

Fire Rating EI 90



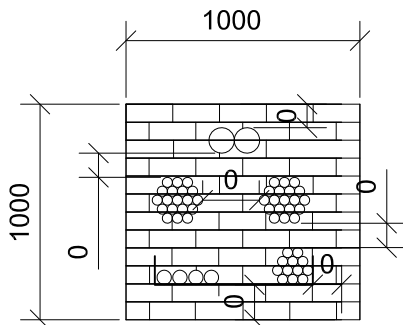
\*) Annular gap fill material

Gaps between services and Hilti Firestop Blocks are filled with Hilti Firestop Filler CFS-FIL, depth 20 mm

Sound Insulation for flexible wall

$D_{n,w} = 54 \text{ dB}$   
 $R_w = 51 \text{ dB}$

Max. opening (1000x1000) and minimum distance



\*\*) Ø cables

	Filler	Filler+1putty a)	Filler+2putty b)
Ø max single sheated cable	80	80	80
Ø max single non- sheated cable	---	24	24
Ø max cable bundle	100	100	100
Ø max for a cable in a cable bundle	21	21	21

- a) One layer of CFS-P BA are wrapped around the services or group of services.  
 b) Two layers of CFS-P BA are wrapped around the services or group of services.





CONTENTS

Multiple in a flexible wall

ID

CAB-FW-MT-0034

FIRESTOP BLOCK

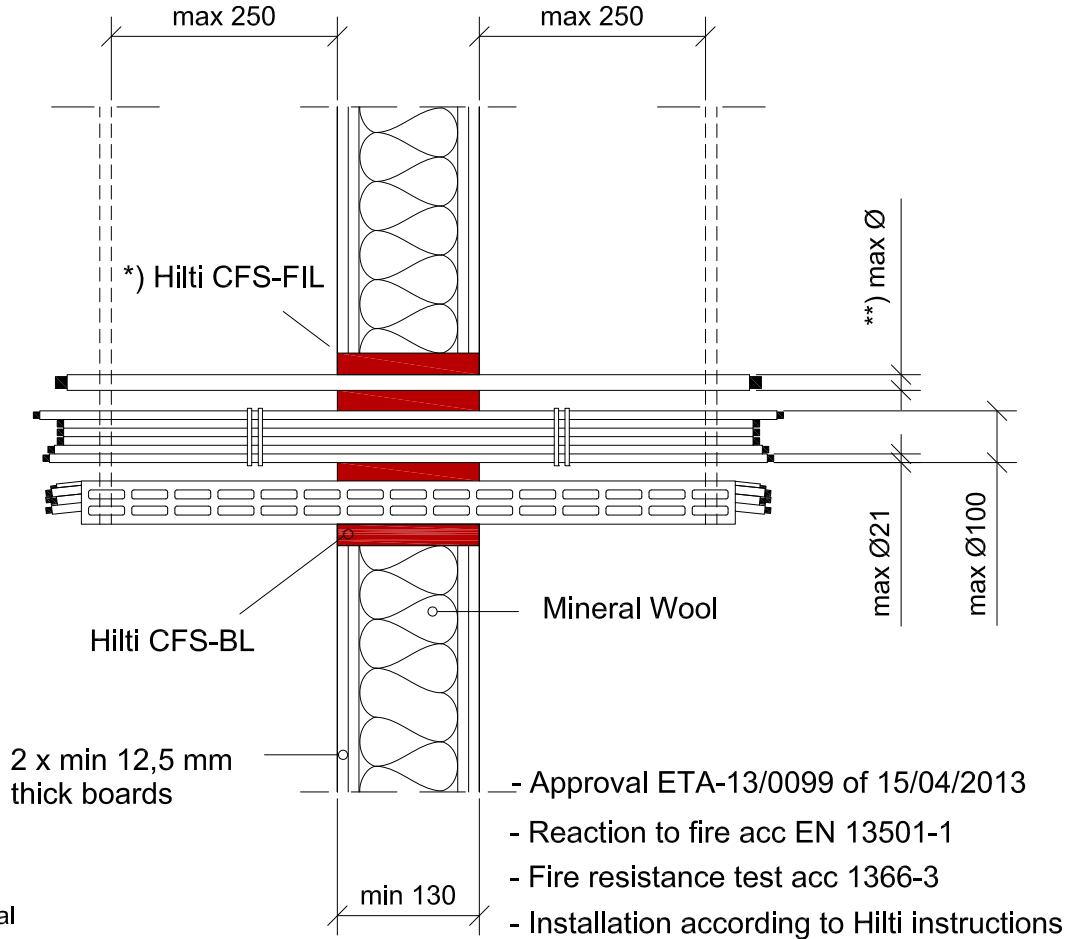
0034\_01

REV 00

No scale

All units are in millimetres

Fire Rating EI 60



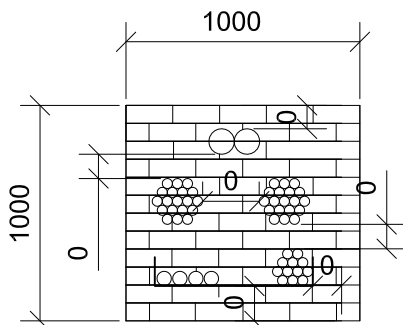
\*) Annular gap fill material

Gaps between services and Hilti Firestop Blocks are filled with Hilti Firestop Filler CFS-FIL, depth 20 mm

Sound Insulation for flexible wall

$D_{n,w} = 54 \text{ dB}$   
 $R_w = 51 \text{ dB}$

Max. opening (1000x1000) and minimum distance



\*\*) Ø cables

	Filler	Filler+1putty a)	Filler+2putty b)
Ø max single sheated cable	80	80	80
Ø max single non-sheated cable	24	24	24
Ø max cable bundle	100	100	100
Ø max for a cable in a cable bundle	21	21	21

a) One layer of CFS-P BA are wrapped around the services or group of services.  
b) Two layers of CFS-P BA are wrapped around the services or group of services.



CONTENTS

Multiple in a flexible wall

ID

CAB-FW-MT-0037

FIRESTOP BLOCK

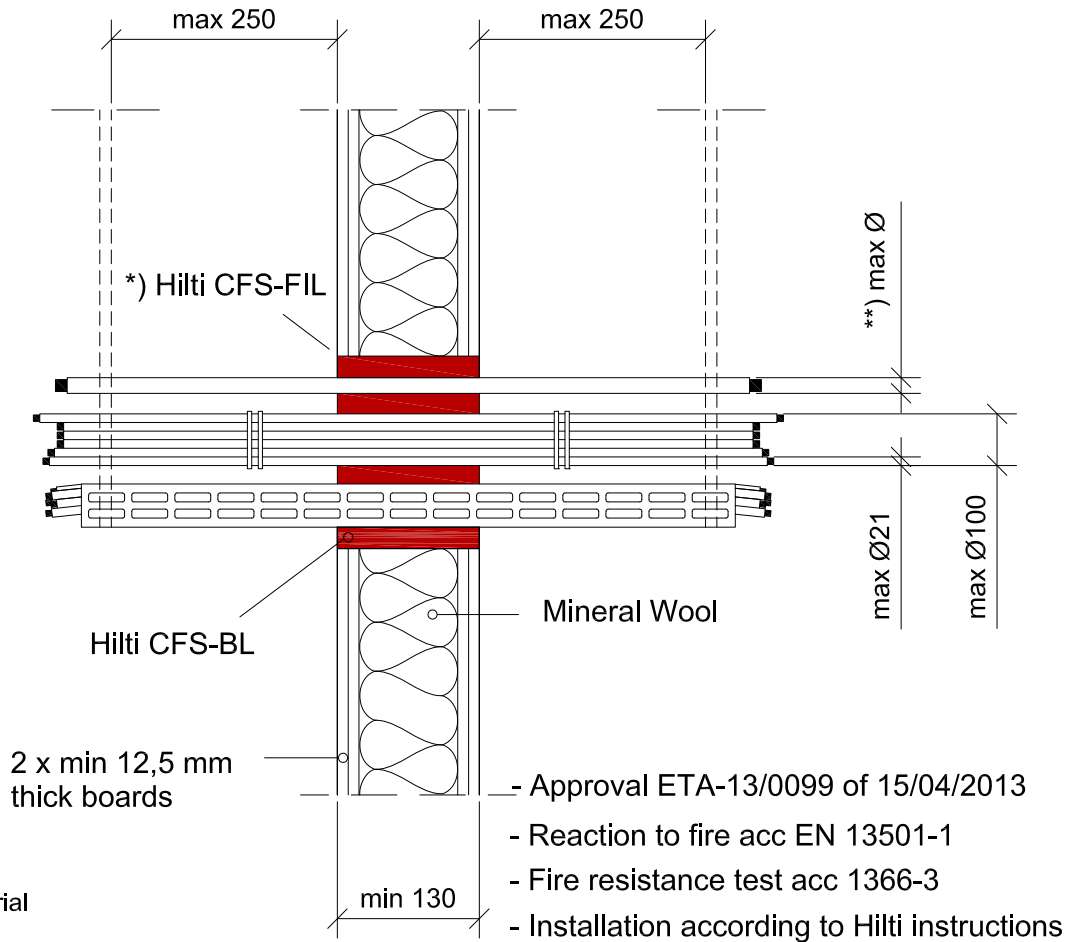
0037\_01

REV  
00

No scale

All units are in milimetres

Fire Rating EI 120



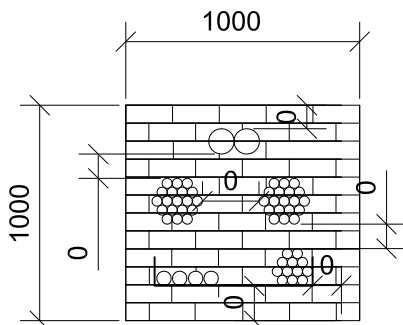
\*) Annular gap fill material

Gaps between services and Hilti Firestop Blocks are filled with Hilti Firestop Filler CFS-FIL, depth 20 mm

Sound Insulation for flexible wall

$D_{n,w} = 54 \text{ dB}$   
 $R_w = 51 \text{ dB}$

Max. opening (1000x1000) and minimum distance



\*\*) Ø cables

	Filler	Filler+1putty a)	Filler+2putty b)
Ø max single sheated cable	---	50	80
Ø max single non- sheated cable	---	---	24
Ø max cable bundle	100	100	100
Ø max for a cable in a cable bundle	21	21	21

- a) One layer of CFS-P BA are wrapped around the services or group of services.  
b) Two layers of CFS-P BA are wrapped around the services or group of services.



CONTENTS

Multiple in a rigid wall

ID

CAB-RW-MT-0040

FIRESTOP BLOCK

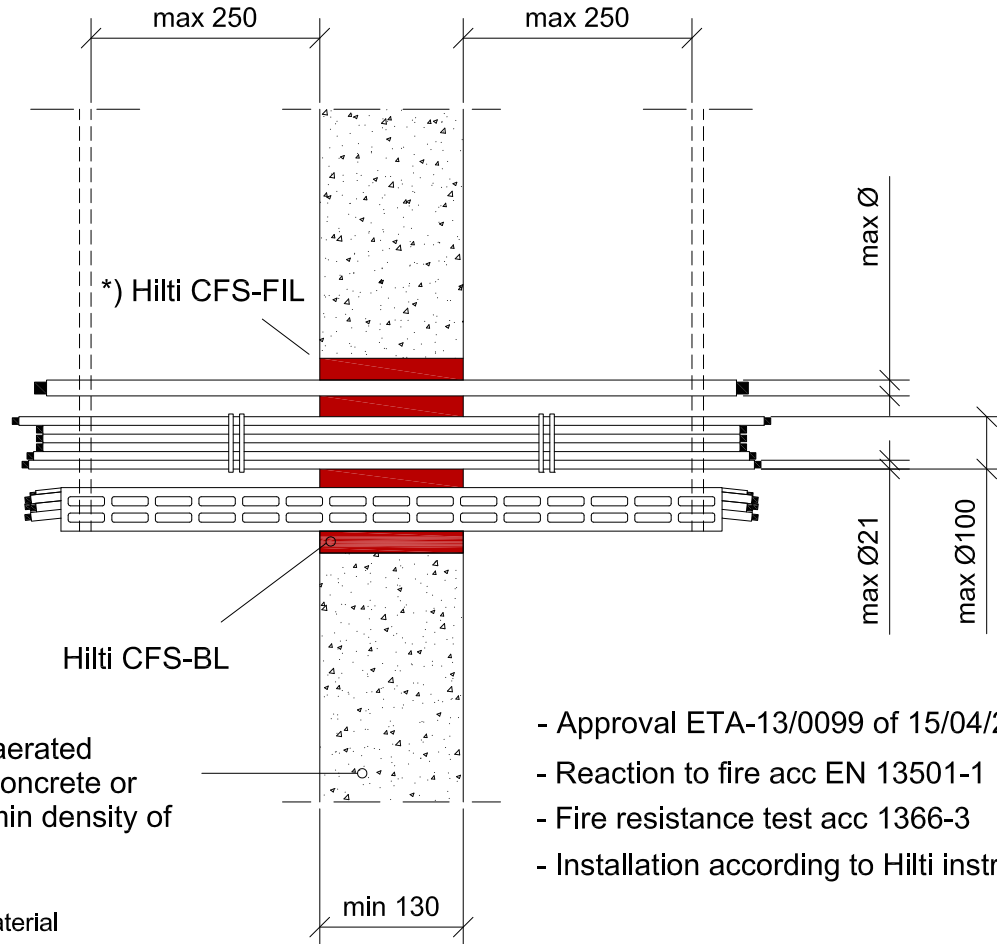
0040\_01

REV 00

No scale

All units are in millimetres

Fire Rating EI 90



Comprise aerated concrete, concrete or masonry. min density of 600 kg/m<sup>3</sup>

- Approval ETA-13/0099 of 15/04/2013
- Reaction to fire acc EN 13501-1
- Fire resistance test acc 1366-3
- Installation according to Hilti instructions

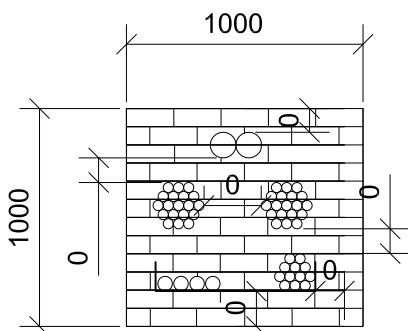
\*) Annular gap fill material

Gaps between services and Hilti Firestop Blocks are filled with Hilti Firestop Filler CFS-FIL, depth 20 mm

Sound Insulation for flexible wall

$D_{n,w} = 54 \text{ dB}$   
 $R_w = 51 \text{ dB}$

Max. opening (1000x1000) and minimum distance



\*\*) Ø cables

	Filler	Filler+1putty a)	Filler+2putty b)
Ø max single sheated cable	80	80	80
Ø max single non- sheated cable	---	24	24
Ø max cable bundle	100	100	100
Ø max for a cable in a cable bundle	21	21	21

- a) One layer of CFS-P BA are wrapped around the services or group of services.
- b) Two layers of CFS-P BA are wrapped around the services or group of services.



CONTENTS

Multiple in a rigid wall

ID

CAB-RW-MT-0043

FIRESTOP BLOCK

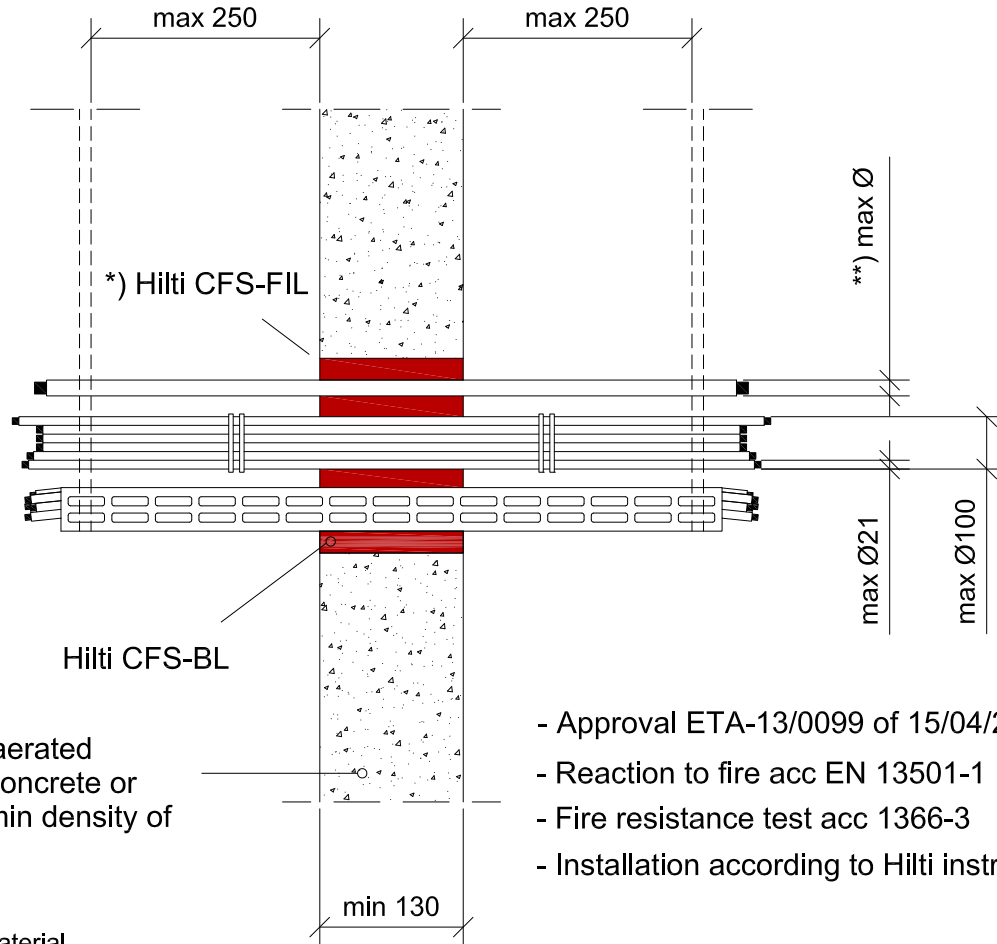
0043\_01

REV 00

No scale

All units are in millimetres

Fire Rating EI 60



Comprise aerated concrete, concrete or masonry. min density of 600 kg/m<sup>3</sup>

- Approval ETA-13/0099 of 15/04/2013
- Reaction to fire acc EN 13501-1
- Fire resistance test acc 1366-3
- Installation according to Hilti instructions

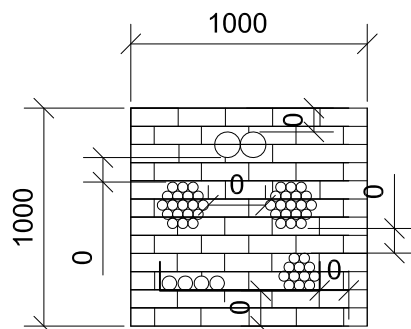
\*) Annular gap fill material

Gaps between services and Hilti Firestop Blocks are filled with Hilti Firestop Filler CFS-FIL, depth 20 mm

Sound Insulation for flexible wall

$D_{n,w} = 54 \text{ dB}$   
 $R_w = 51 \text{ dB}$

Max. opening (1000x1000) and minimum distance



\*\*) Ø cables

	Filler	Filler+1putty a)	Filler+2putty b)
Ø max single sheated cable	80	80	80
Ø max single non- sheated cable	24	24	24
Ø max cable bundle	100	100	100
Ø max for a cable in a cable bundle	21	21	21

- a) One layer of CFS-P BA are wrapped around the services or group of services.
- b) Two layers of CFS-P BA are wrapped around the services or group of services.



CONTENTS

Multiple in a rigid wall

ID

CAB-RW-MT-0046

FIRESTOP BLOCK

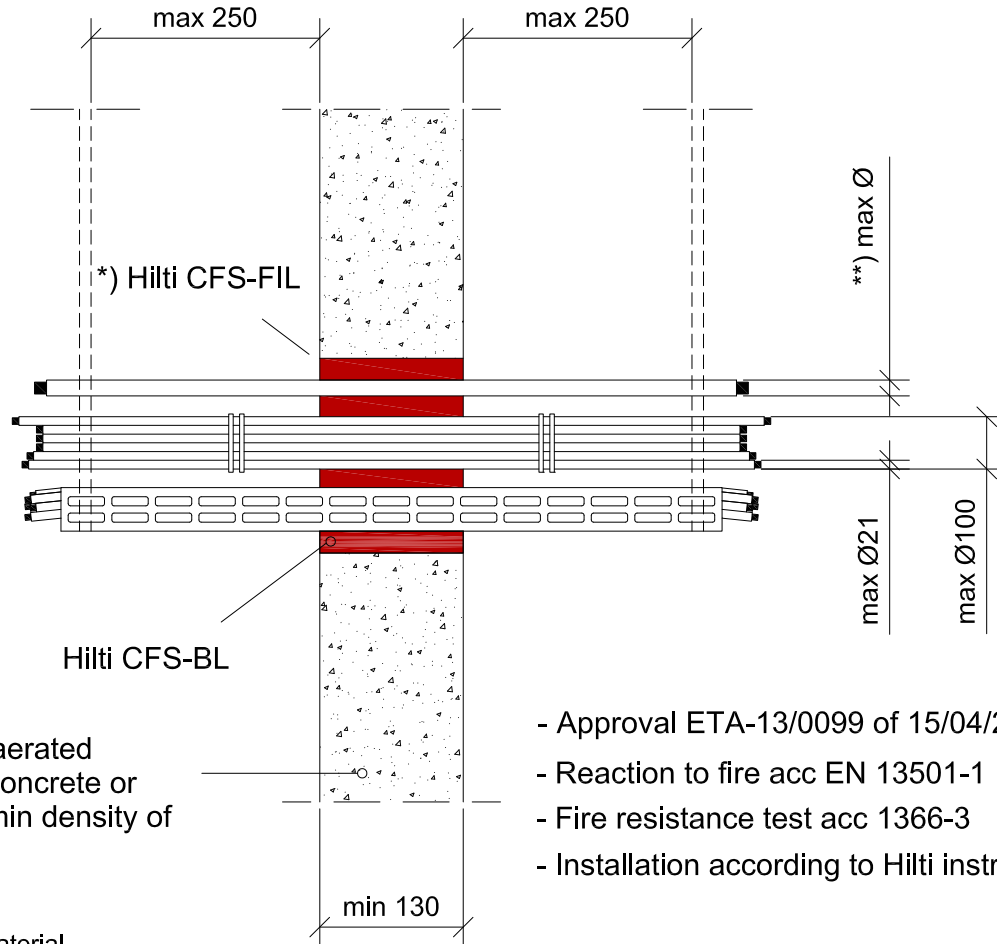
0046\_01

REV 00

No scale

All units are in millimetres

Fire Rating EI 120



Comprise aerated concrete, concrete or masonry. min density of 600 kg/m<sup>3</sup>

- Approval ETA-13/0099 of 15/04/2013
- Reaction to fire acc EN 13501-1
- Fire resistance test acc 1366-3
- Installation according to Hilti instructions

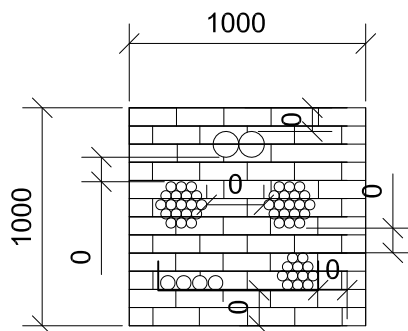
\*) Annular gap fill material

Gaps between services and Hilti Firestop Blocks are filled with Hilti Firestop Filler CFS-FIL, depth 20 mm

Sound Insulation for flexible wall

$D_{n,w} = 54 \text{ dB}$   
 $R_w = 51 \text{ dB}$

Max. opening (1000x1000) and minimum distance



\*\*) Ø cables

	Filler	Filler+1putty a)	Filler+2putty b)
Ø max single sheathed cable	---	50	80
Ø max single non- sheathed cable	---	---	24
Ø max cable bundle	100	100	100
Ø max for a cable in a cable bundle	21	21	21

- a) One layer of CFS-P BA are wrapped around the services or group of services.
- b) Two layers of CFS-P BA are wrapped around the services or group of services.



CONTENTS

Multiple in a rigid floor

ID

CAB-RF-MT-0049

FIRESTOP BLOCK

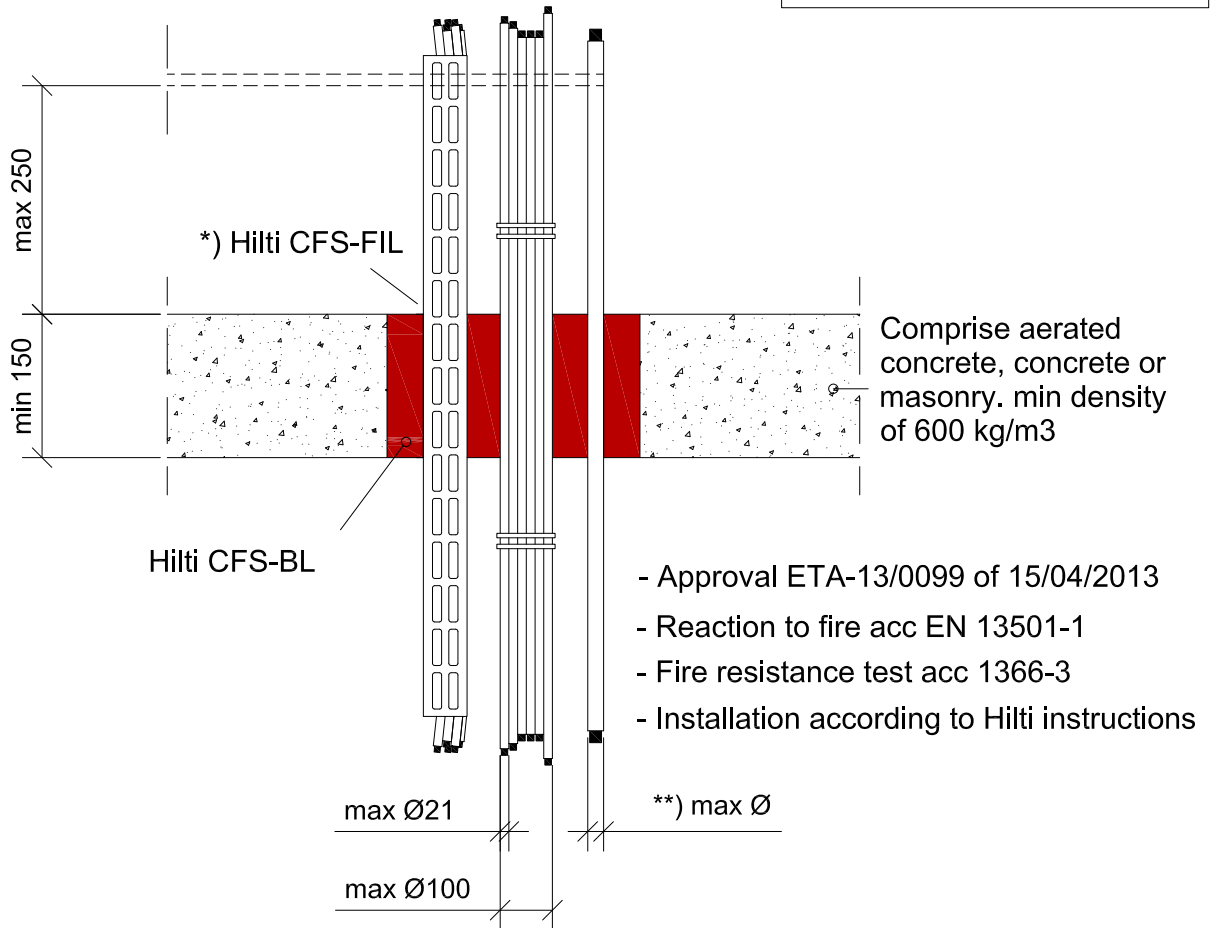
0049\_01

REV  
00

No scale

All units are in millimetres

Fire Rating EI 90



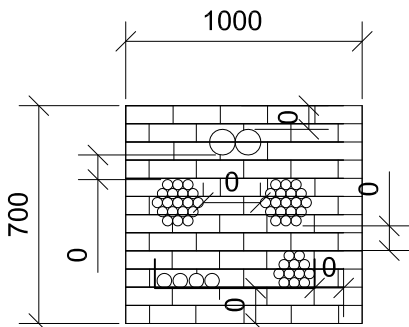
\*) Annular gap fill material

Gaps between services and Hilti Firestop Blocks are filled with Hilti Firestop Filler CFS-FIL, depth 20 mm

Sound Insulation for rigid floor

$D_{n,w} = 54 \text{ dB}$   
 $R_w = 51 \text{ dB}$

Max. opening (1000x700) or an area of 7000 cm<sup>2</sup>. Minimum distance:



\*\*) Ø cables

**) Ø cables	Filler	Filler+2putty a)
Ø max single sheated cable	80	80
Ø max single non- sheated cable	---	24
Ø max cable bundle	100	100
Ø max for a cable in a cable bundle	21	21

a) Two layers of CFS-P BA are wrapped around the services or group of services.



CONTENTS

Multiple in a rigid floor

ID

CAB-RF-MT-0052

FIRESTOP BLOCK

0052\_01

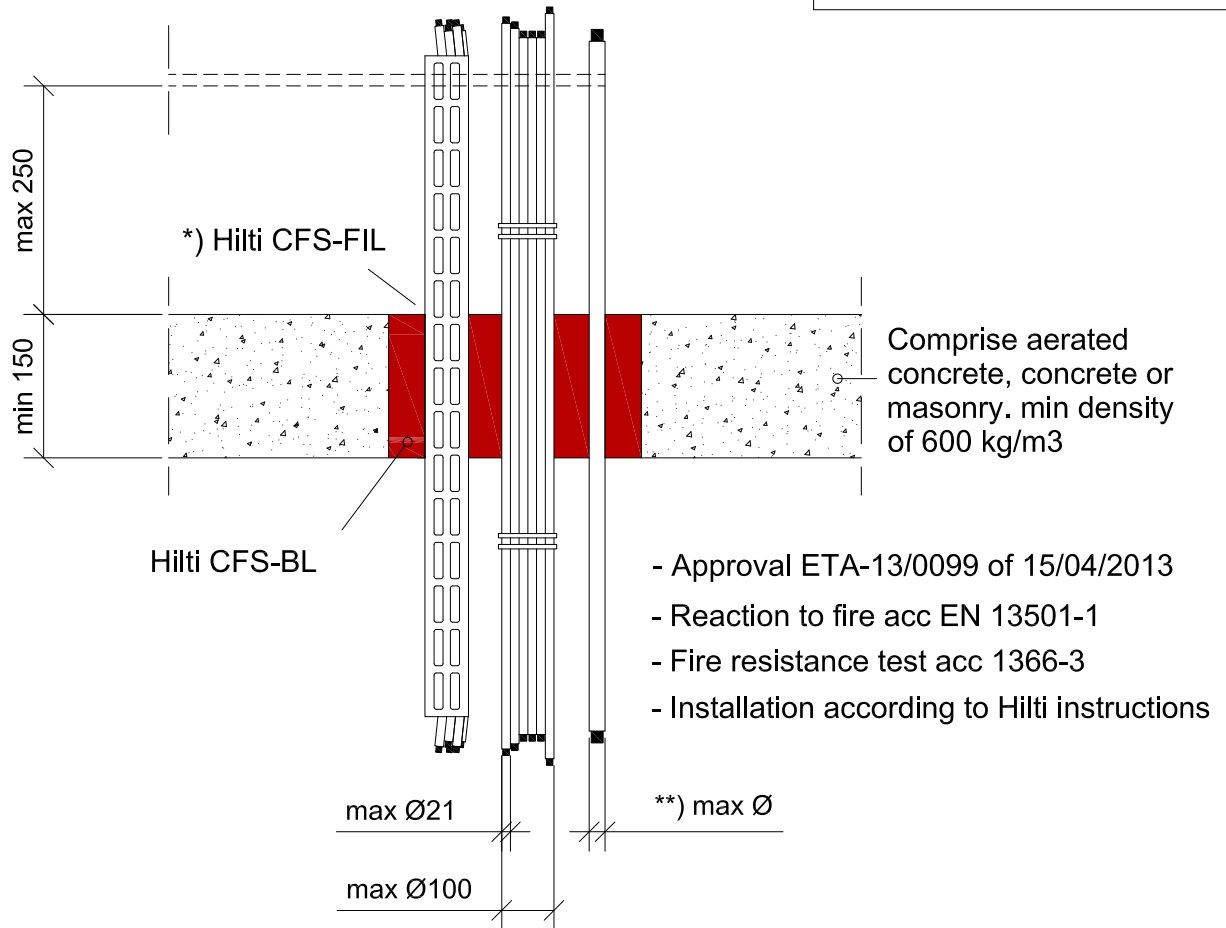
REV

00

No scale

All units are in millimetres

Fire Rating EI 60



\*) Annular gap fill material

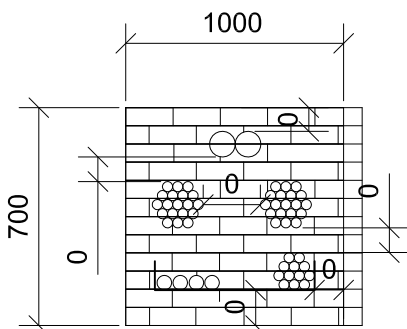
Gaps between services and Hilti Firestop Blocks are filled with Hilti Firestop Filler CFS-FIL, depth 20 mm

Sound Insulation for rigid floor

$D_{n,w} = 54 \text{ dB}$

$R_w = 51 \text{ dB}$

Max. opening (1000x700) or an area of 7000 cm<sup>2</sup>. Minimum distance:



\*\*) Ø cables

	Filler	Filler+2putty a)
Ø max single sheated cable	80	80
Ø max single non- sheated cable	24	24
Ø max cable bundle	100	100
Ø max for a cable in a cable bundle	21	21

a) Two layers of CFS-P BA are wrapped around the services or group of services.



CONTENTS

Multiple in a rigid floor

ID

CAB-RF-MT-0055

FIRESTOP BLOCK

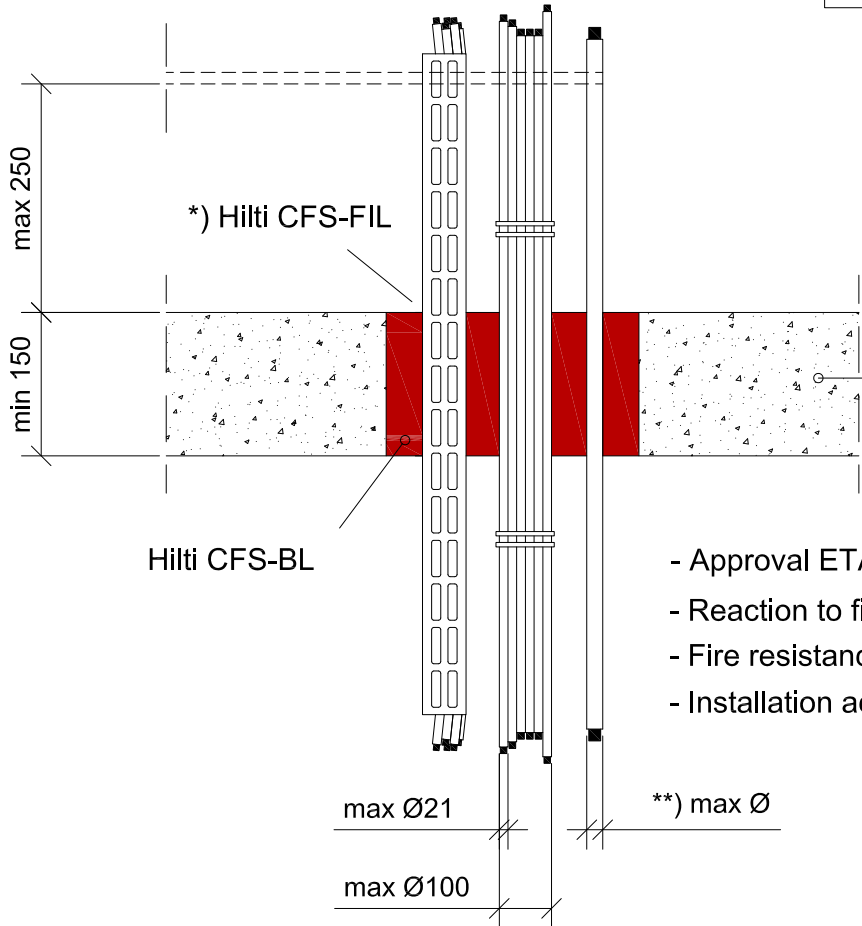
0055\_01

REV  
00

No scale

All units are in millimetres

Fire Rating EI 120



Comprise aerated concrete, concrete or masonry. min density of 600 kg/m<sup>3</sup>

- Approval ETA-13/0099 of 15/04/2013
- Reaction to fire acc EN 13501-1
- Fire resistance test acc 1366-3
- Installation according to Hilti instructions

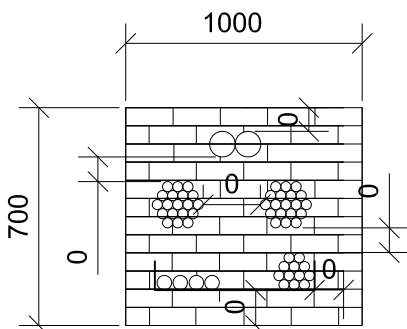
\*) Annular gap fill material

Gaps between services and Hilti Firestop Blocks are filled with Hilti Firestop Filler CFS-FIL, depth 20 mm

Sound Insulation for rigid floor

$D_{n,w} = 54 \text{ dB}$   
 $R_w = 51 \text{ dB}$

Max. opening (1000x700) or an area of 7000 cm<sup>2</sup>. Minimum distance:



\*\*) Ø cables

	Filler	Filler+2putty a)
Ø max single sheathed cable	---	80
Ø max single non-sheathed cable	---	24
Ø max cable bundle	---	100
Ø max for a cable in a cable bundle	---	21

a) Two layers of CFS-P BA are wrapped around the services or group of services.