

Schémas d'application pour la mousse coupe-feu CFS-F FX



Applications pour câbles unitaires et bottes de câbles

Câbles unitaires et bottes de câbles

- Application en cloison épaisseur 150 mm (dimensions maximum de l'ouverture 600 x 600 ou Ø 600) CAB-FW-BD-0069
- Application en cloison épaisseur 200 mm (dimensions maximum de l'ouverture 600 x 600 ou Ø 600) CAB-FW-BD-0075/78
- Application en voile rigide épaisseur 150 mm (dimensions maximum de l'ouverture 600 x 600 ou Ø 600) CAB-RW-BD-0084
- Application en voile rigide épaisseur 200 mm (dimensions maximum de l'ouverture 600 x 600 ou Ø 600) CAB-RW-BD-0090/93
- Application en dalle rigide épaisseur 150 mm (dimensions maximum de l'ouverture 400 x 400 ou Ø 400) CAB-RF-BD-0099
- Application en dalle rigide épaisseur 200 mm (dimensions maximum de l'ouverture 400 x 400 ou Ø 400) CAB-RF-BD-0105

Câbles unitaires

- Application en cloison épaisseur 150 mm (dimensions maximum de l'ouverture 600 x 600 ou Ø 600) CAB-FW-SG-0072
- Application en voile rigide épaisseur 150 mm (dimensions maximum de l'ouverture 600 x 600 ou Ø 600) CAB-RW-SG-0087
- Application en dalle rigide épaisseur 200 mm (dimensions maximum de l'ouverture 400 x 400 ou Ø 400) CAB-RF-SG-0102

*) Tous les schémas sont également disponibles sur demande en format DWG pour faciliter l'insertion sur des plans.



CONTENTS

Single and cable bundles in a flexible wall

ID

CAB-FW-BD-0069

FIRESTOP FOAM

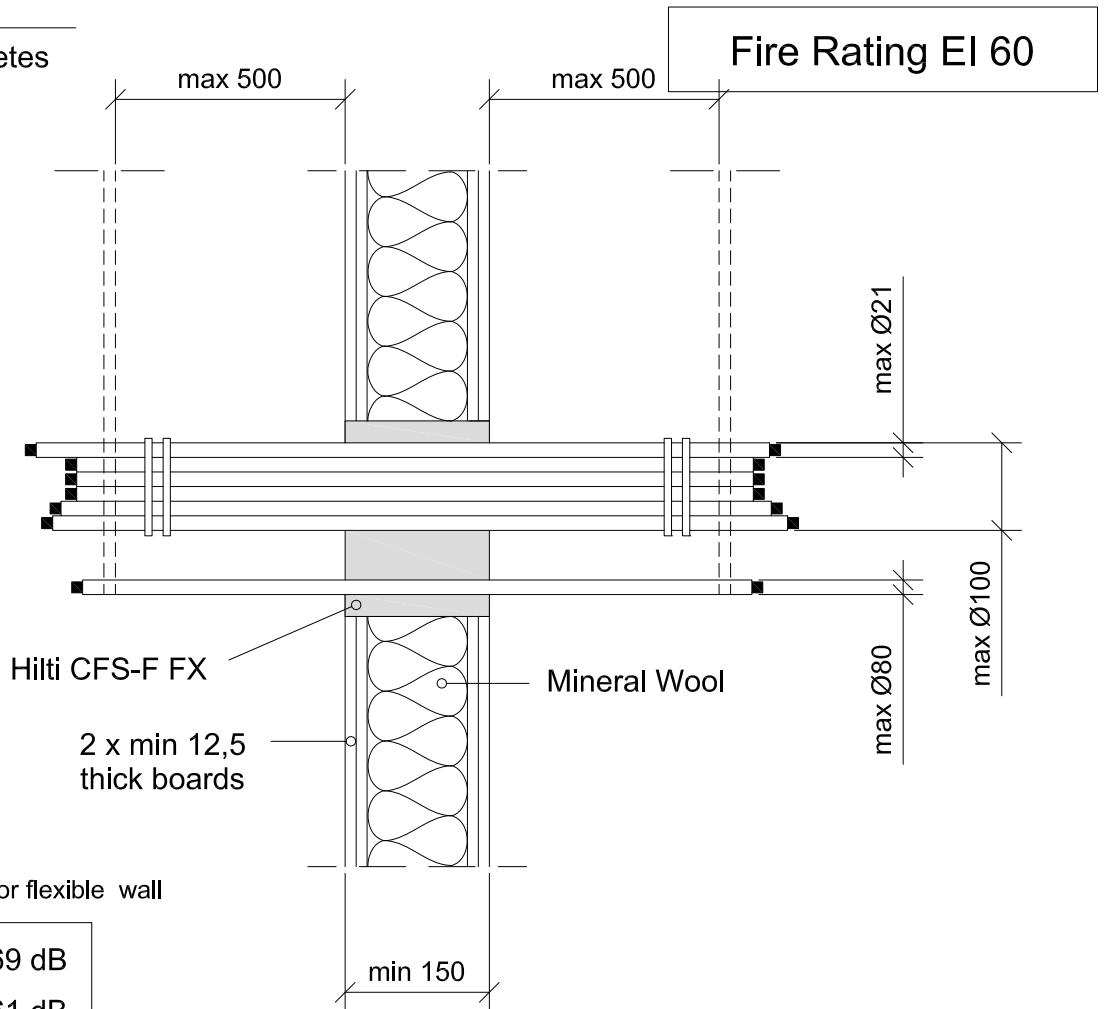
0069_01

REV

00

No scale

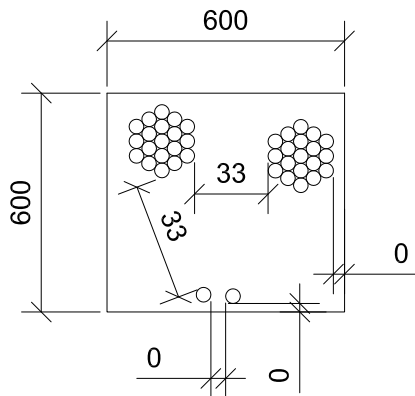
All units are in millimetres



Sound Insulation for flexible wall

$D_{n,w} = 69 \text{ dB}$
$R_w = 61 \text{ dB}$

- Approval ETA-10/0109 of 11/04/2014
- Reaction to fire acc EN 13501-1
- Fire resistance test acc 1366-3
- Installation according to Hilti instructions



Max. opening 600x600 or Ø 600 mm
Total amount of services(including insulation) is equal or lower than 60 % of the penetration surface.



CONTENTS

Single and cable bundles in a flexible wall

ID

CAB-FW-BD-0075

FIRESTOP FOAM

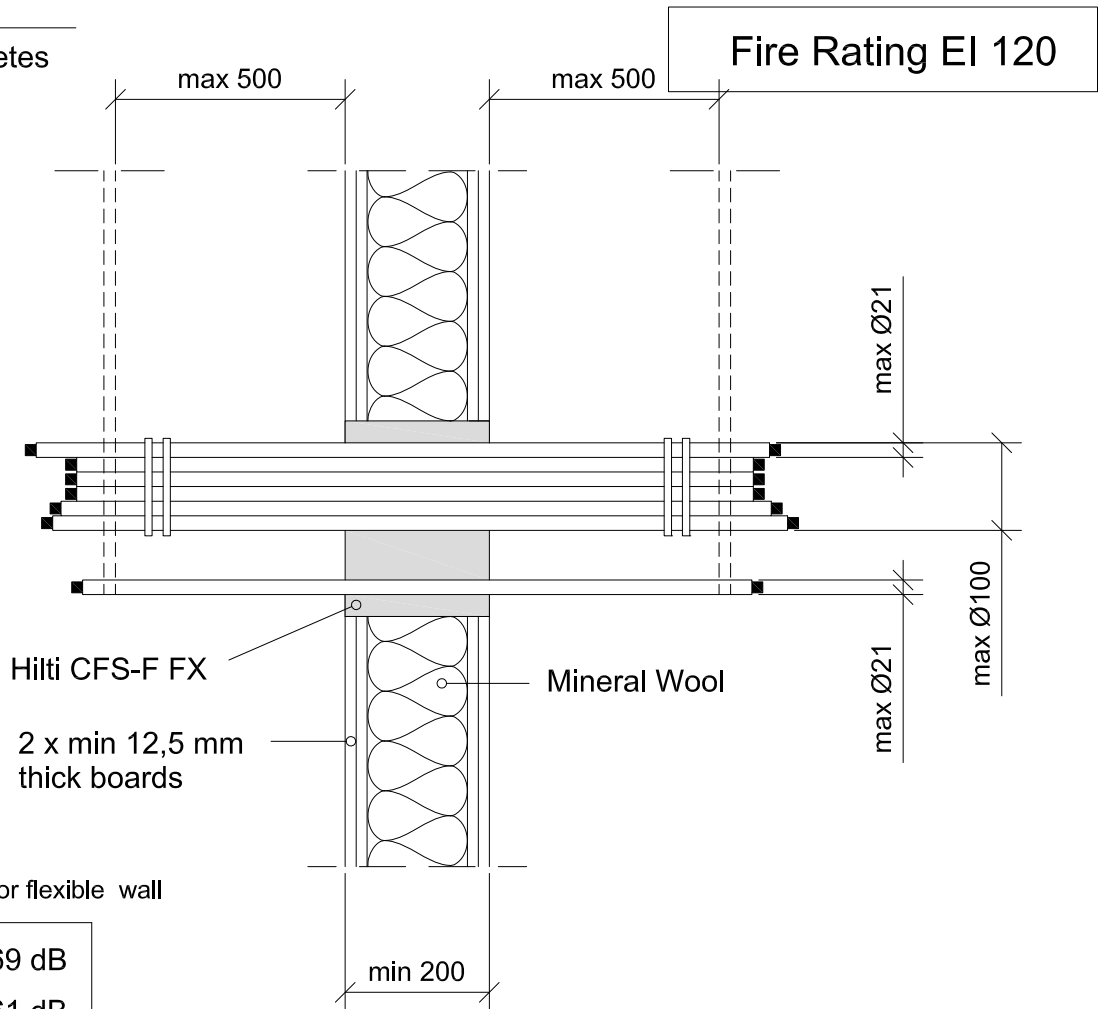
0075_01

REV

00

No scale

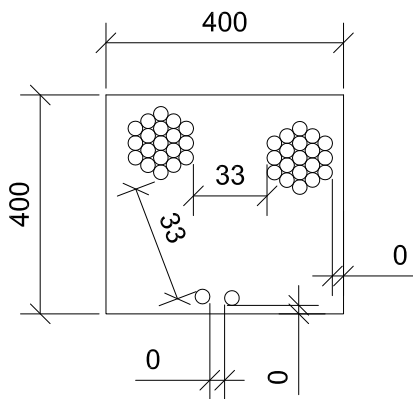
All units are in millimetres



Sound Insulation for flexible wall

$D_{n,w} = 69 \text{ dB}$
$R_w = 61 \text{ dB}$

- Approval ETA-10/0109 of 11/04/2014
- Reaction to fire acc EN 13501-1
- Fire resistance test acc 1366-3
- Installation according to Hilti instructions



Max. opening 400x400 or Ø 400 mm
Total amount of services(including insulation) is equal or lower than 60 % of the penetration surface.



CONTENTS

Single and cable bundles in a flexible wall

ID

CAB-FW-BD-0078

FIRESTOP FOAM

0078_01

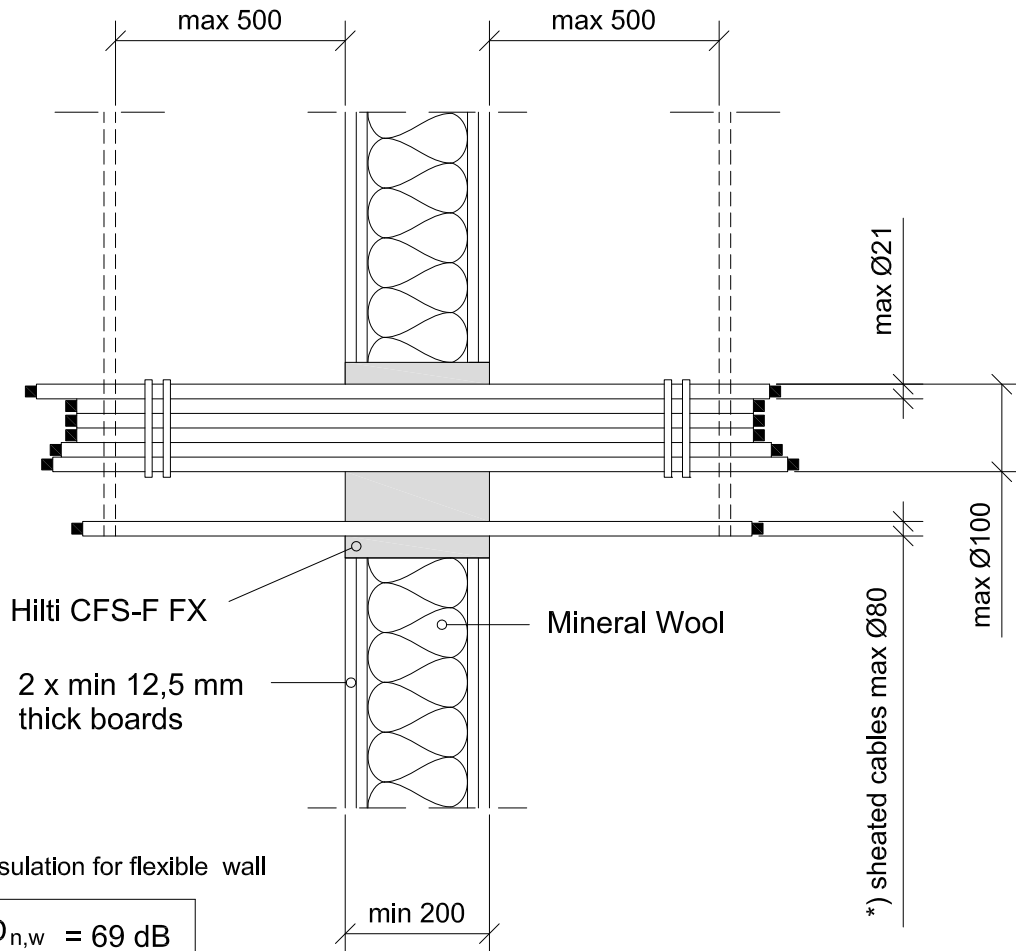
REV

00

No scale

All units are in millimetres

Fire Rating EI 90

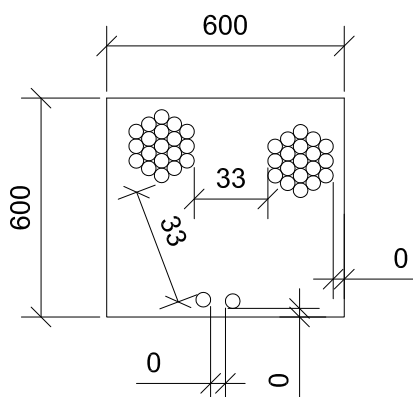


Sound Insulation for flexible wall

$D_{n,w} = 69 \text{ dB}$

$R_w = 61 \text{ dB}$

*) Valid also for all sheathed single core cables (max Ø21) and non sheathed cables (max Ø24)



- Approval ETA-10/0109 of 11/04/2014
- Reaction to fire acc EN 13501-1
- Fire resistance test acc 1366-3
- Installation according to Hilti instructions

Max. opening 600x600 or Ø 600 mm

Total amount of services (including insulation) is equal or lower than 60 % of the penetration surface.



CONTENTS

Single cables in a flexible wall

ID

CAB-FW-SG-0072

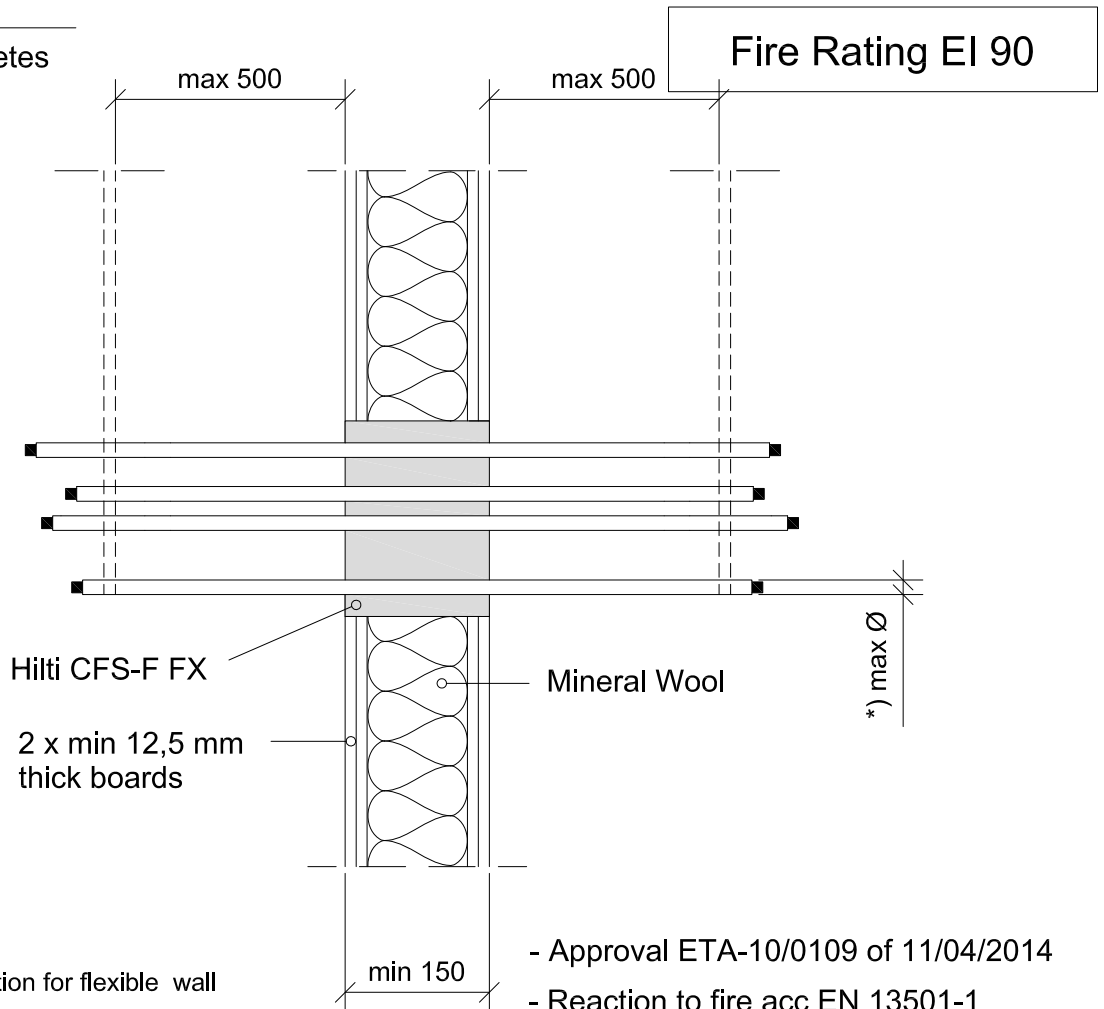
FIRESTOP FOAM

0072_01

REV
00

No scale

All units are in millimetres



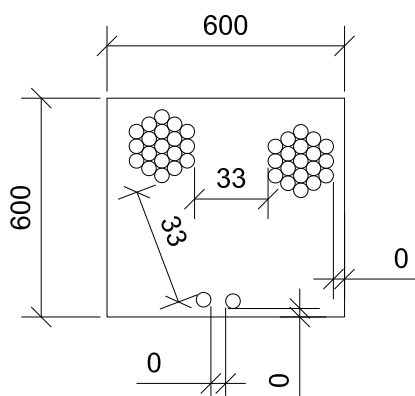
Sound Insulation for flexible wall

$D_{n,w}$	= 69 dB
R_w	= 61 dB

- Approval ETA-10/0109 of 11/04/2014
- Reaction to fire acc EN 13501-1
- Fire resistance test acc 1366-3
- Installation according to Hilti instructions

*) Type and Ø cables

Ø max single sheated core cable	21
Ø max single multi-core halogen free cables acc HD 604.5	50
Ø max single multi-core rubber cables acc HD 22.4	80



Max. opening 600x600 or Ø 600 mm

Total amount of services (including insulation) is equal or lower than 60 % of the penetration surface.



CONTENTS

Single and cable bundles in a rigid wall

ID

CAB-RW-BD-0084

FIRESTOP FOAM

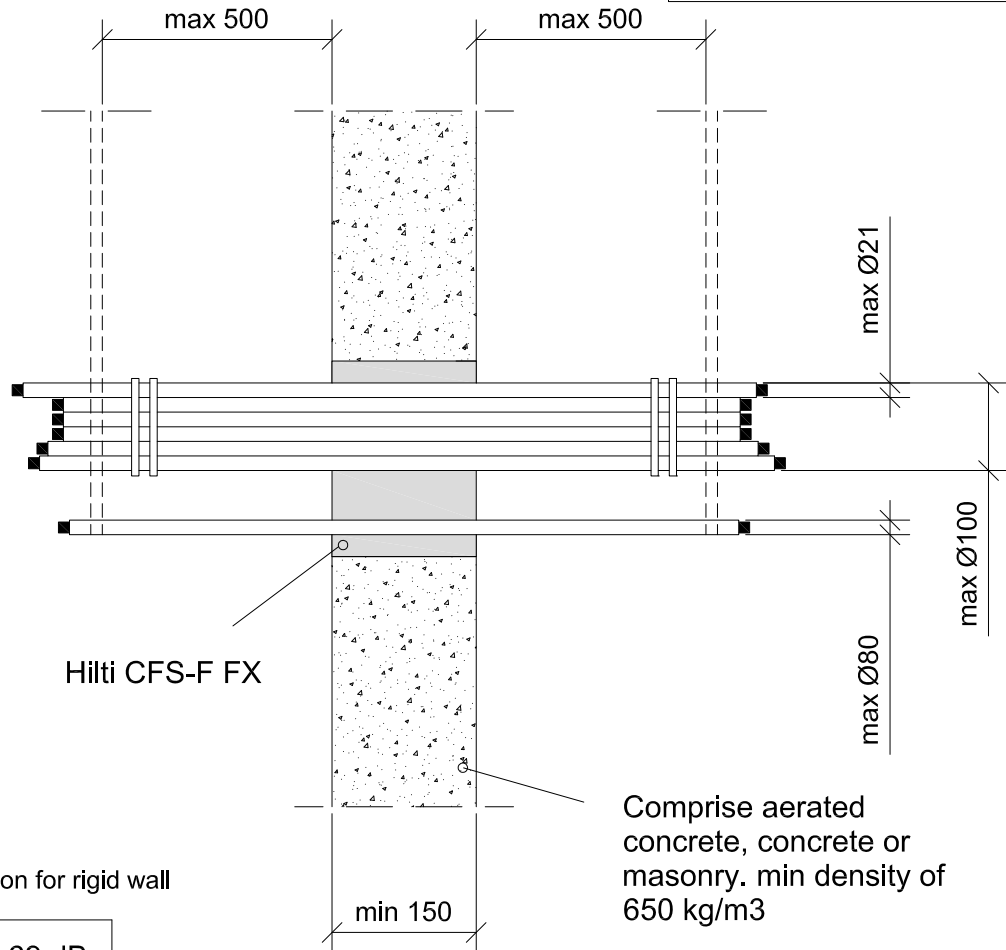
0084_01

REV 00

No scale

All units are in millimetres

Fire Rating EI 60



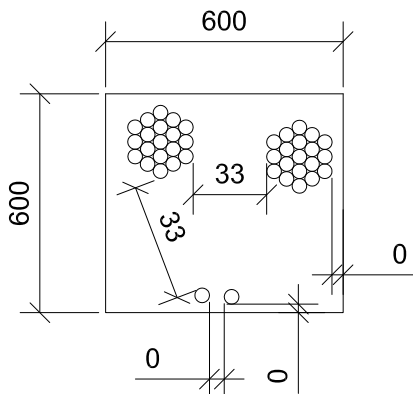
Hilti CFS-F FX

Comprise aerated concrete, concrete or masonry. min density of 650 kg/m³

Sound Insulation for rigid wall

$$D_{n,w} = 69 \text{ dB}$$

$$R_w = 61 \text{ dB}$$



- Approval ETA-10/0109 of 11/04/2014
- Reaction to fire acc EN 13501-1
- Fire resistance test acc 1366-3
- Installation according to Hilti instructions

Max. opening 600x600 or Ø 600 mm

Total amount of services(including insulation) is equal or lower than 60 % of the penetration surface.



CONTENTS

Single cables in a rigid wall

ID

CAB-RW-SG-0087

FIRESTOP FOAM

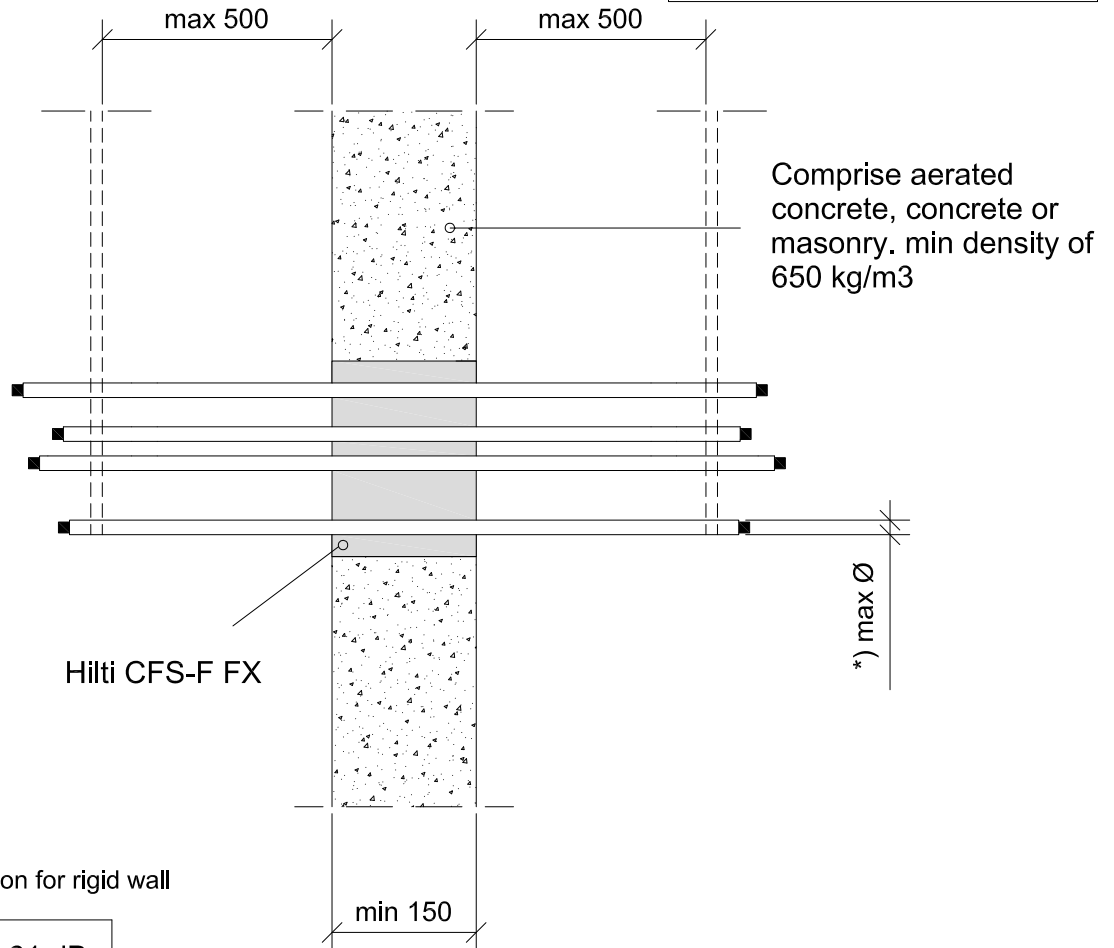
0087_01

REV
00

No scale

All units are in millimetres

Fire Rating EI 90

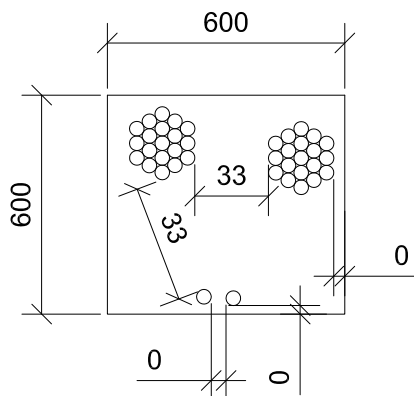


Sound Insulation for rigid wall

$D_{n,w}$	= 61 dB
R_w	= 69 dB

*) Type and Ø cables

Ø max single sheated core cable	21
Ø max single multi-core halogen free cables acc HD 604.5	50
Ø max single multi-core rubber cables acc HD 22.4	80



- Approval ETA-10/0109 of 11/04/2014
- Reaction to fire acc EN 13501-1
- Fire resistance test acc 1366-3
- Installation according to Hilti instructions

Max. opening 600x600 or Ø 600 mm

Total amount of services(including insulation) is equal or lower than 60 % of the penetration surface.



CONTENTS

Single and cable bundles in a rigid wall

ID

CAB-RW-BD-0090

FIRESTOP FOAM

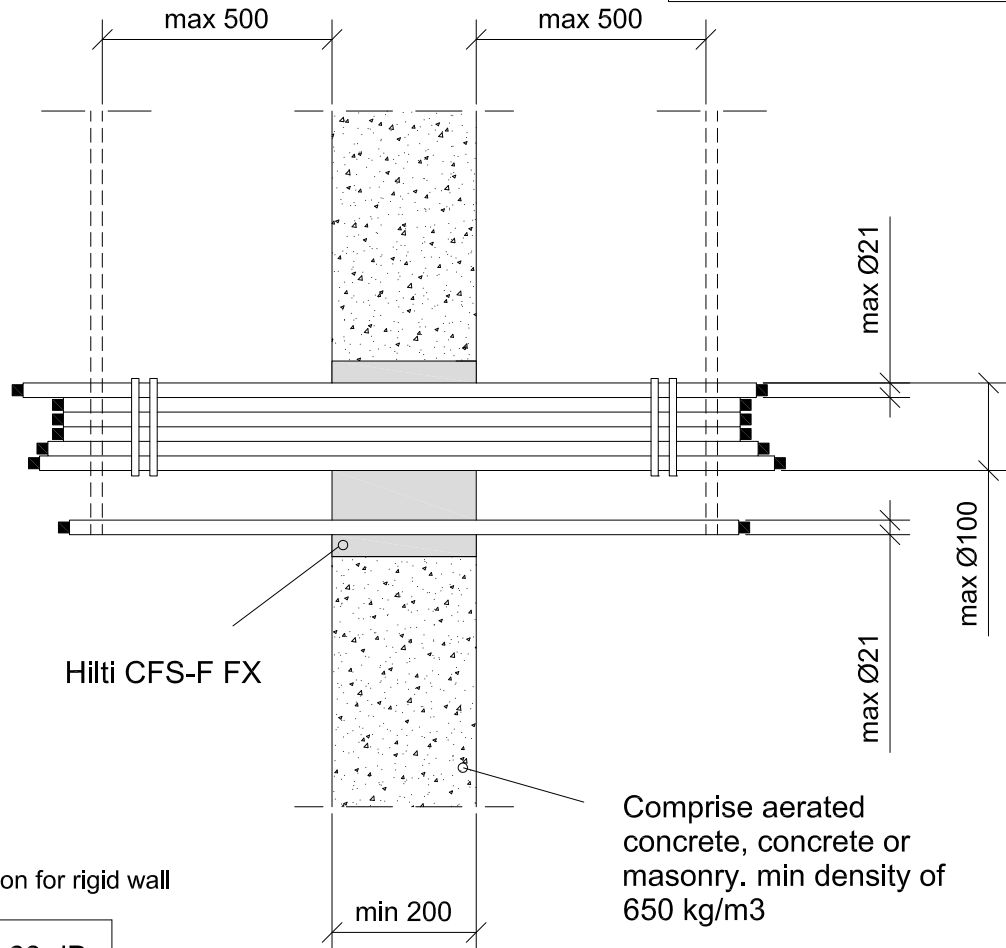
0090_01

REV 00

No scale

All units are in millimetres

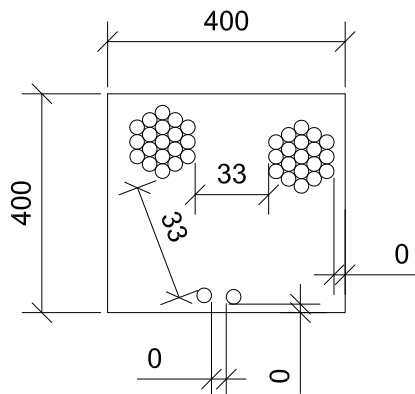
Fire Rating EI 120



Sound Insulation for rigid wall

$$D_{n,w} = 69 \text{ dB}$$

$$R_w = 61 \text{ dB}$$



- Approval ETA-10/0109 of 11/04/2014
- Reaction to fire acc EN 13501-1
- Fire resistance test acc 1366-3
- Installation according to Hilti instructions

Max. opening 400x400 or Ø 400 mm

Total amount of services(including insulation) is equal or lower than 60 % of the penetration surface.



CONTENTS

Single and cable bundles in a rigid wall

ID

CAB-RW-BD-0093

FIRESTOP FOAM

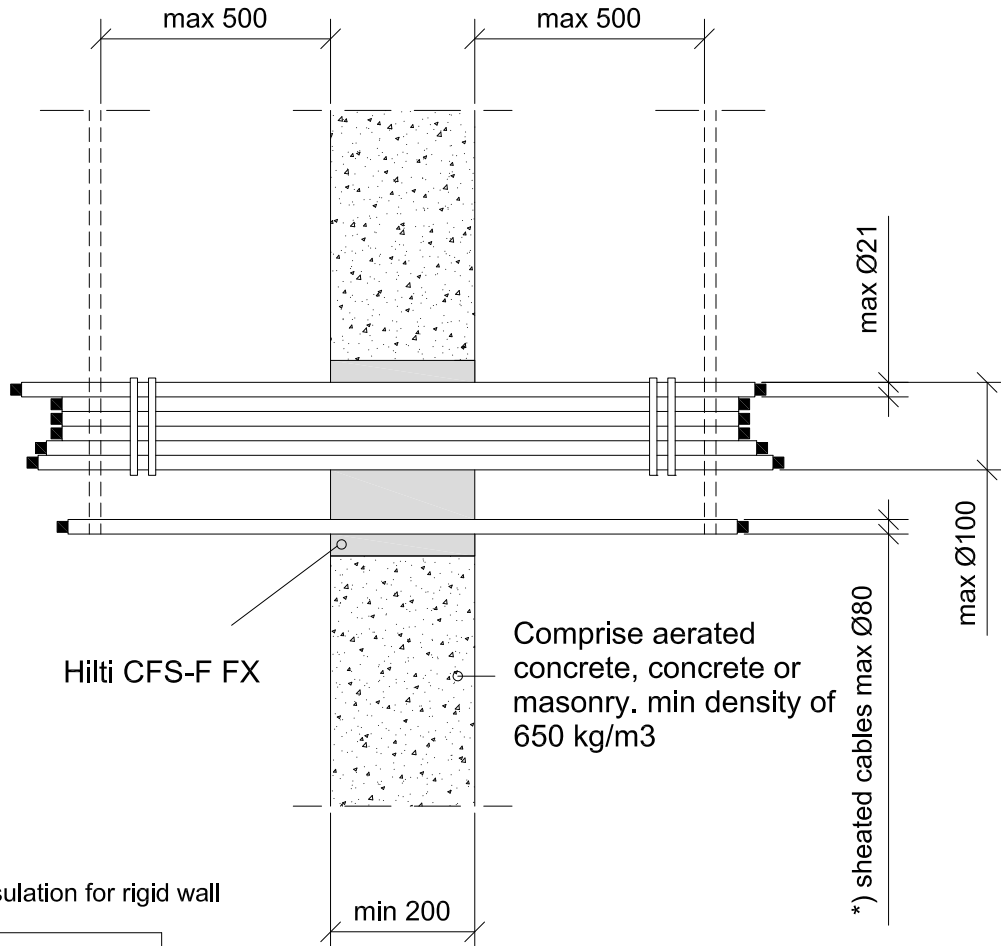
0093_01

REV 00

No scale

All units are in millimetres

Fire Rating EI 90

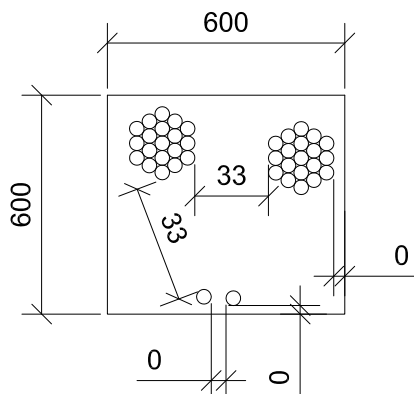


Sound Insulation for rigid wall

$$D_{n,w} = 69 \text{ dB}$$

$$R_w = 61 \text{ dB}$$

*) Valid also for all sheathed single core cables (max Ø21) and non sheathed cables (max Ø24)



- Approval ETA-10/0109 of 11/04/2014
- Reaction to fire acc EN 13501-1
- Fire resistance test acc 1366-3
- Installation according to Hilti instructions

Max. opening 600x600 or Ø 600 mm

Total amount of services (including insulation) is equal or lower than 60 % of the penetration surface.



CONTENTS

Single and cable bundles in a rigid floor

ID

CAB-RF-BD-0099

FIRESTOP FOAM

0099_01

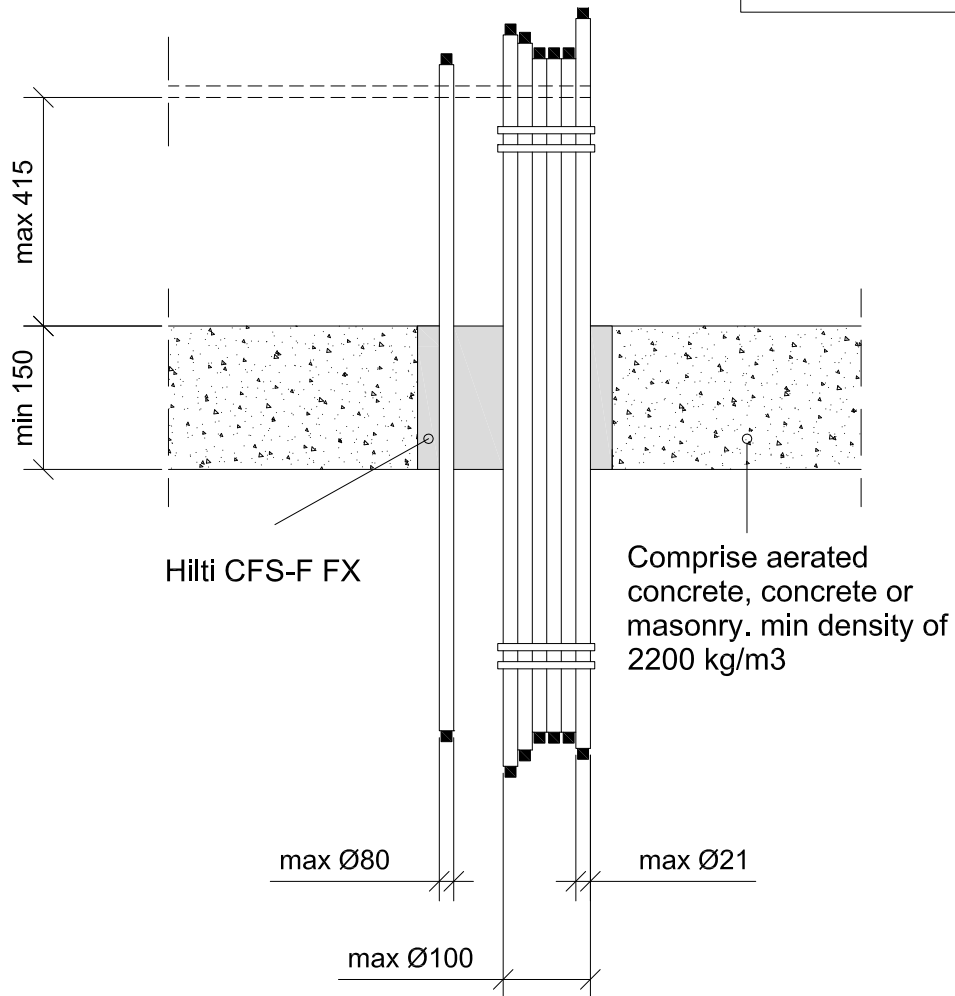
REV

00

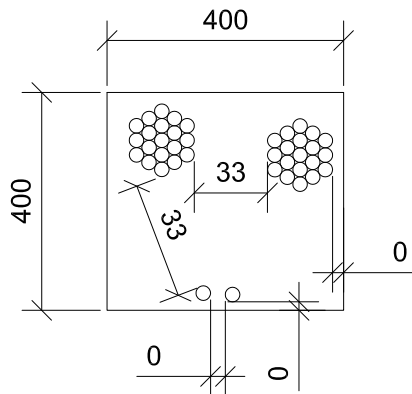
No scale

All units are in millimetres

Fire Rating EI 60



- Approval ETA-10/0109 of 11/04/2014
- Reaction to fire acc EN 13501-1
- Fire resistance test acc 1366-3
- Installation according to Hilti instructions



Max. opening 400x400 or Ø 400 mm

Total amount of services (including insulation) is equal or lower than 60 % of the penetration surface.



CONTENTS

Single and cable bundles in a rigid floor

ID

CAB-RF-BD-0105

FIRESTOP FOAM

0105_01

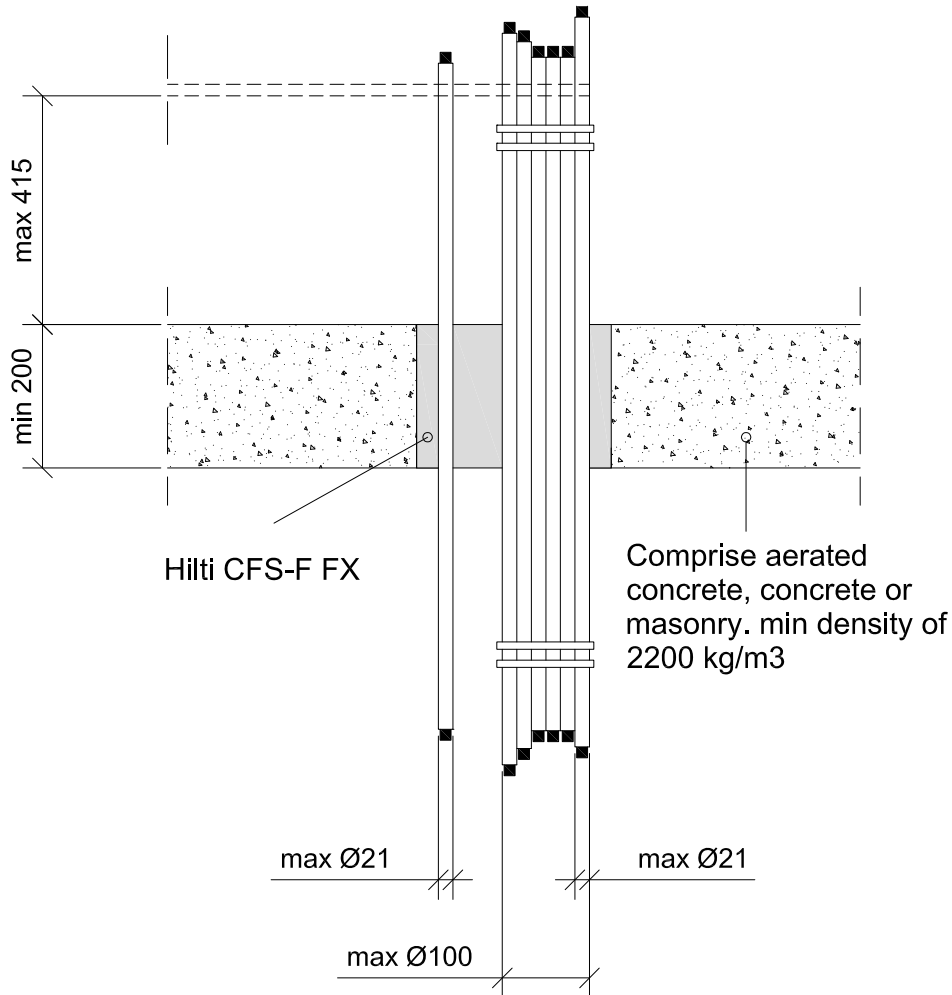
REV

00

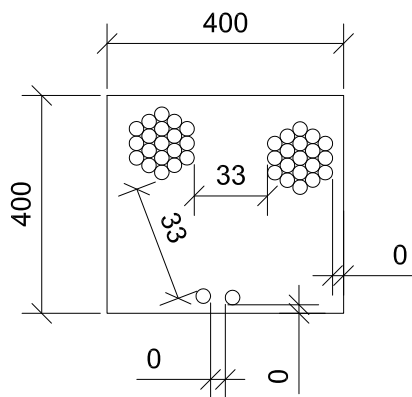
No scale

All units are in millimetres

Fire Rating EI 120



- Approval ETA-10/0109 of 11/04/2014
- Reaction to fire acc EN 13501-1
- Fire resistance test acc 1366-3
- Installation according to Hilti instructions



Max. opening 400x400 or Ø 400 mm

Total amount of services (including insulation) is equal or lower than 60 % of the penetration surface.



CONTENTS

Single cables in a rigid floor

ID

CAB-RF-SG-0102

FIRESTOP FOAM

0102_01

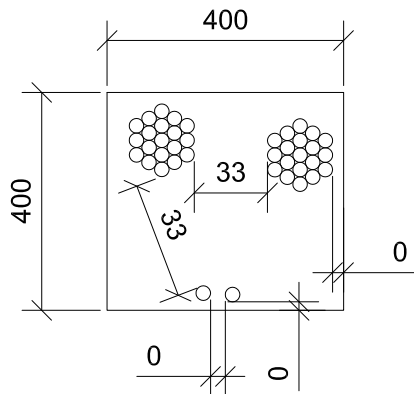
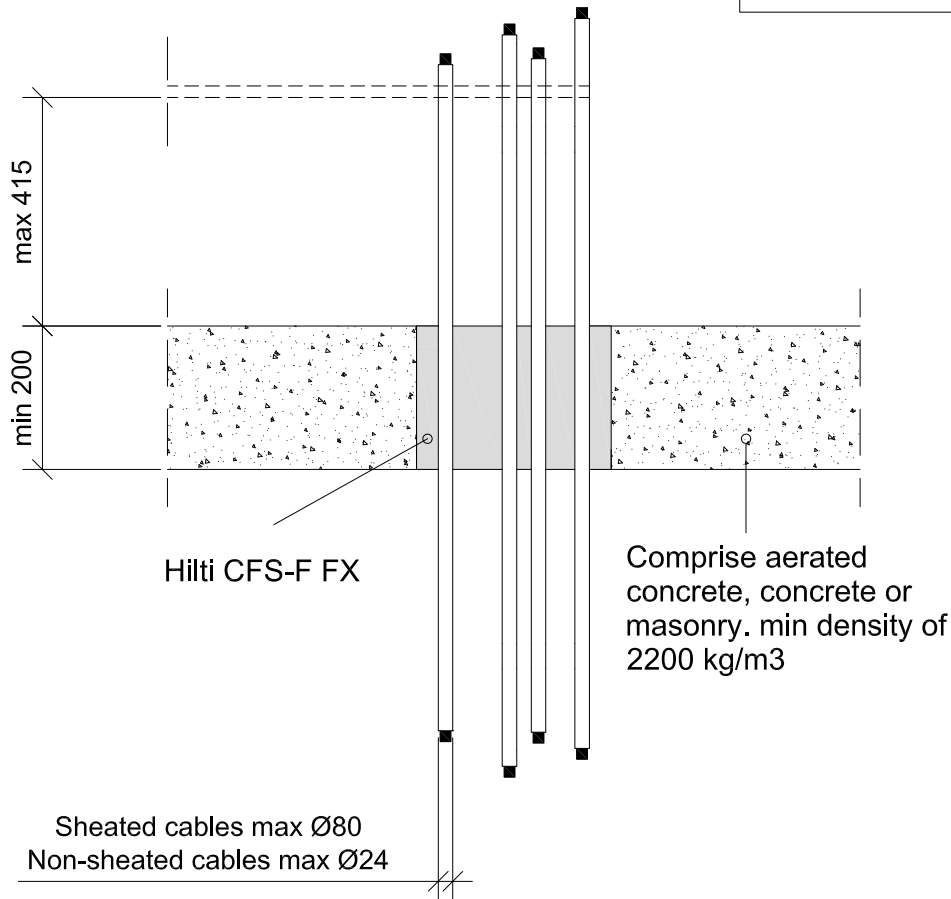
REV

00

No scale

All units are in millimetres

Fire Rating EI 90



- Approval ETA-10/0109 of 11/04/2014
- Reaction to fire acc EN 13501-1
- Fire resistance test acc 1366-3
- Installation according to Hilti instructions

Max. opening 400x400 or Ø 400 mm

Total amount of services(including insulation) is equal or lower than 60 % of the penetration surface.