

# Schémas d'application pour le mortier coupe-feu CFS-M RG



## Applications pour câbles unitaires, bottes de câble, chemin de câbles et conduits acier et plastique

### Câbles unitaires et bottes de câbles

- Application en voile rigide épaisseur 150 mm  
(dimensions maximum de l'ouverture 1200 x 2000) CAB-RW-BD-0144/147/150
- Application en dalle rigide épaisseur 150 mm  
(dimensions maximum de l'ouverture 600 x 2000) CAB-RF-BD-0154/157/160

### Chemins de câbles

- Application en voile rigide épaisseur 150 mm  
(dimensions maximum de l'ouverture 1200 x 2000) CAB-RW-TR-0145/148/151
- Application en dalle rigide épaisseur 150 mm  
(dimensions maximum de l'ouverture 600 x 2000) CAB-RF-TR-0155/158/161

### Multiple (câbles unitaires, bottes et chemins de câbles)

- Application en voile rigide épaisseur 150 mm  
(dimensions maximum de l'ouverture 1200 x 2000) CAB-RW-MT-0146/149/152
- Application en dalle rigide épaisseur 150 mm  
(dimensions maximum de l'ouverture 600 x 2000) CAB-RF-MT-0156/159/162

### Conduits acier et plastique

- Application en voile rigide épaisseur 150 mm  
(dimensions maximum de l'ouverture 1200 x 2000) CAB-RW-CD-0153
- Application en dalle rigide épaisseur 150 mm  
(dimensions maximum de l'ouverture 600 x 2000) CAB-RF-CD-0163/164

\*) Tous les schémas sont également disponibles sur demande en format DWG pour faciliter l'insertion sur des plans.



CONTENTS

Single and cable bundles in a rigid wall

ID

CAB-RW-BD-0144

FIRESTOP MORTAR

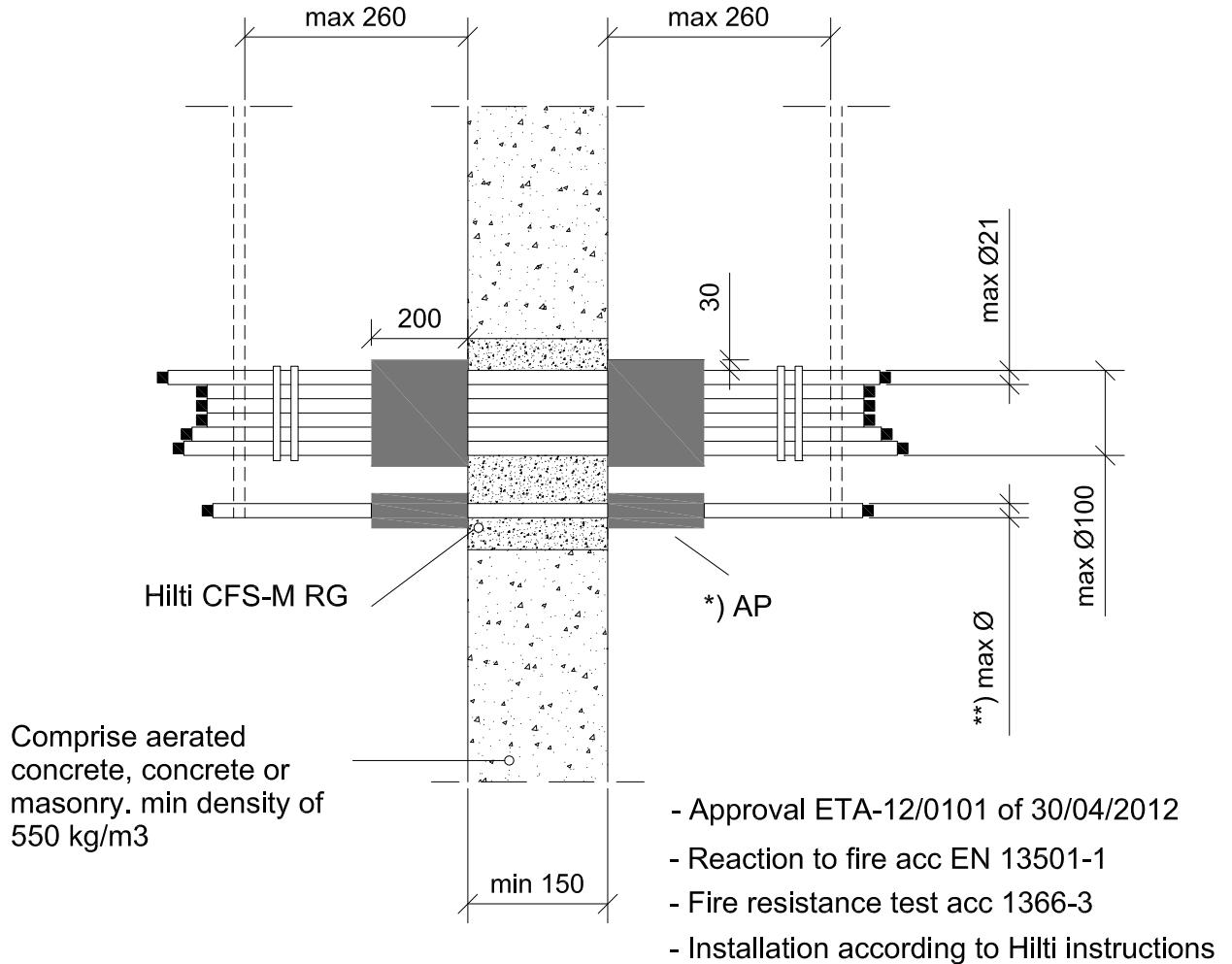
0144\_01

REV 00

No scale

All units are in millimetres

Fire Rating EI 120



\*) Additional Protection (AP)

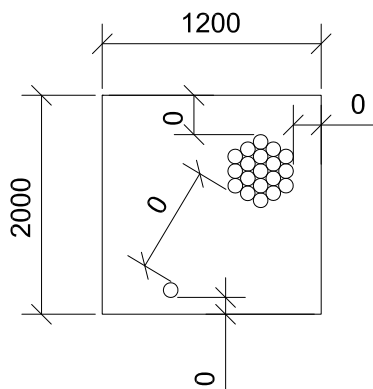
Sound Insulation for rigid wall

Max. opening (1200x2000) and minimum distance

Mineral Wool wrapped around cables/cable support, al-faced side outside, fastened with wire.

$D_{n,w} = 59 \text{ dB}$

$R_w = 52 \text{ dB}$



\*\*) Seal type and Ø cables

**) Seal type and Ø cables	Without AP	With AP
Ø max single sheated cable	21	80
Ø max single non-sheated cable	---	24
Ø max cable bundle	100	100
Ø max for a cable in a cable bundle	21	21



CONTENTS

Cable tray in a rigid wall

ID

CAB-RW-TR-0145

FIRESTOP MORTAR

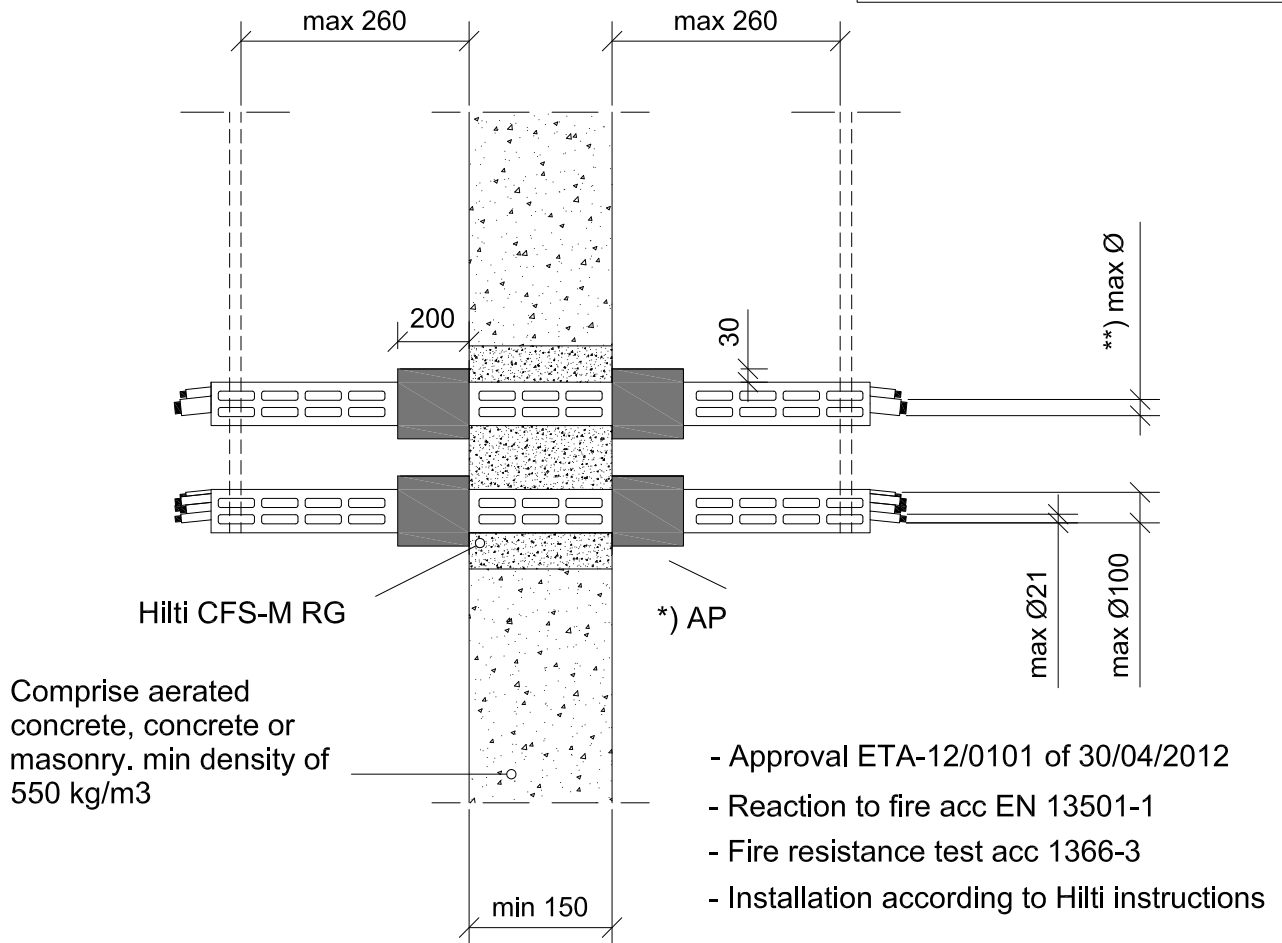
0145\_01

REV 00

No scale

All units are in millimetres

Fire Rating EI 120



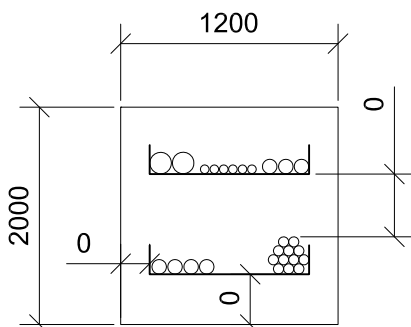
\*) Additional Protection (AP)

Sound Insulation for rigid wall

Max. opening (1200x2000) and minimum distance

Mineral Wool wrapped around cables/cable support, al-faced side outside, fastened with wire.

$D_{n,w} = 59 \text{ dB}$   
 $R_w = 52 \text{ dB}$



\*\*) Seal type and Ø cables

	Without AP	With AP
Ø max single sheated cable	21	80
Ø max single non- sheated cable	---	24
Ø max cable bundle	100	100
Ø max for a cable in a cable bundle	21	21





CONTENTS

Single and cable bundles in a rigid wall

ID

CAB-RW-BD-0147

FIRESTOP MORTAR

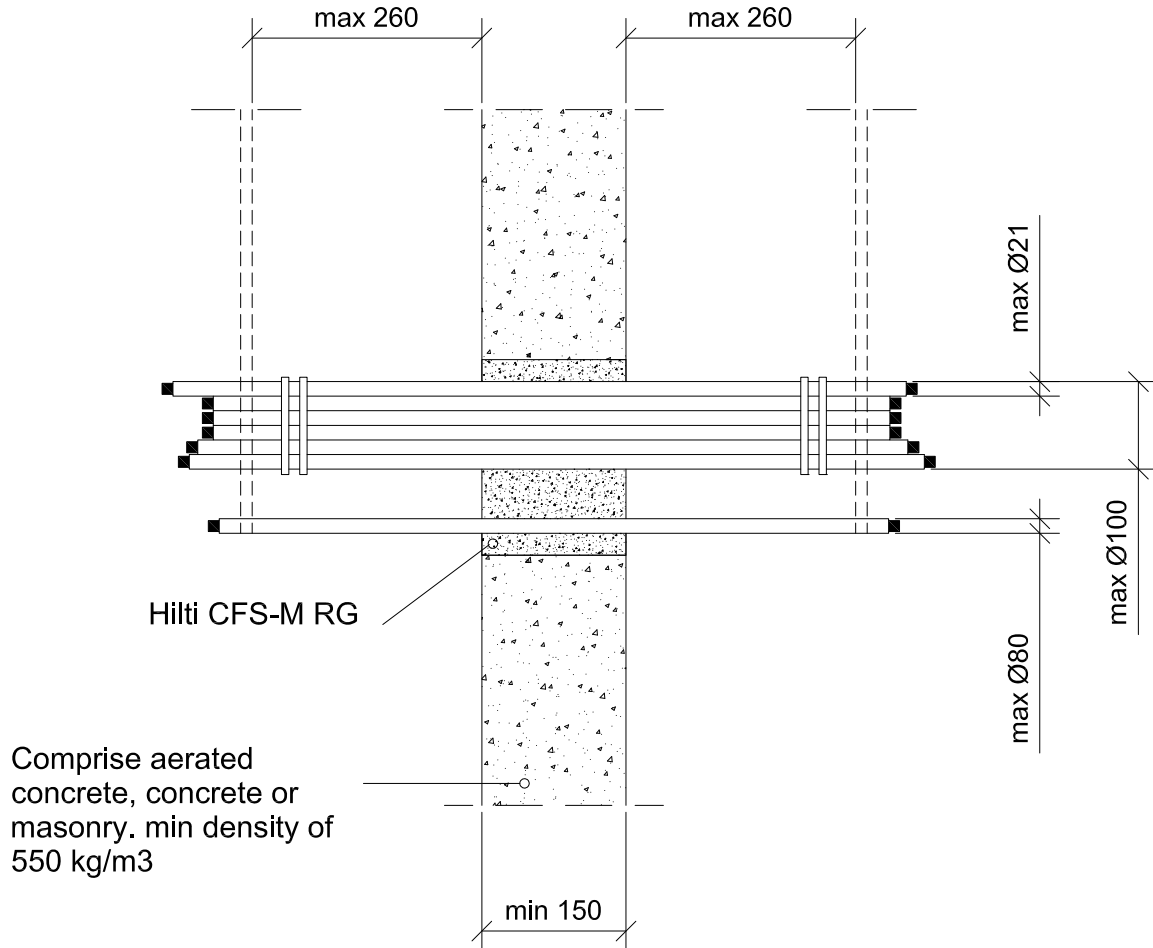
0147\_01

REV 00

No scale

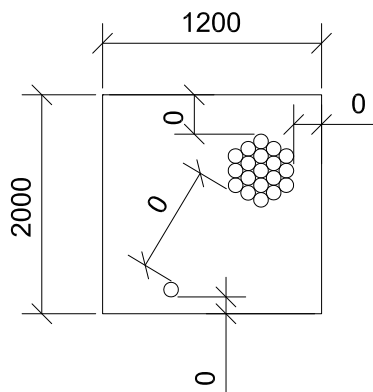
All units are in millimetres

Fire Rating EI 90



Comprise aerated concrete, concrete or masonry. min density of 550 kg/m<sup>3</sup>

Max. opening (1200x2000) and minimum distance



- Approval ETA-12/0101 of 30/04/2012
- Reaction to fire acc EN 13501-1
- Fire resistance test acc 1366-3
- Installation according to Hilti instructions

Sound Insulation for rigid wall

$$D_{n,w} = 59 \text{ dB}$$

$$R_w = 52 \text{ dB}$$



CONTENTS

Cable tray in a rigid wall

ID

CAB-RW-TR-0148

FIRESTOP MORTAR

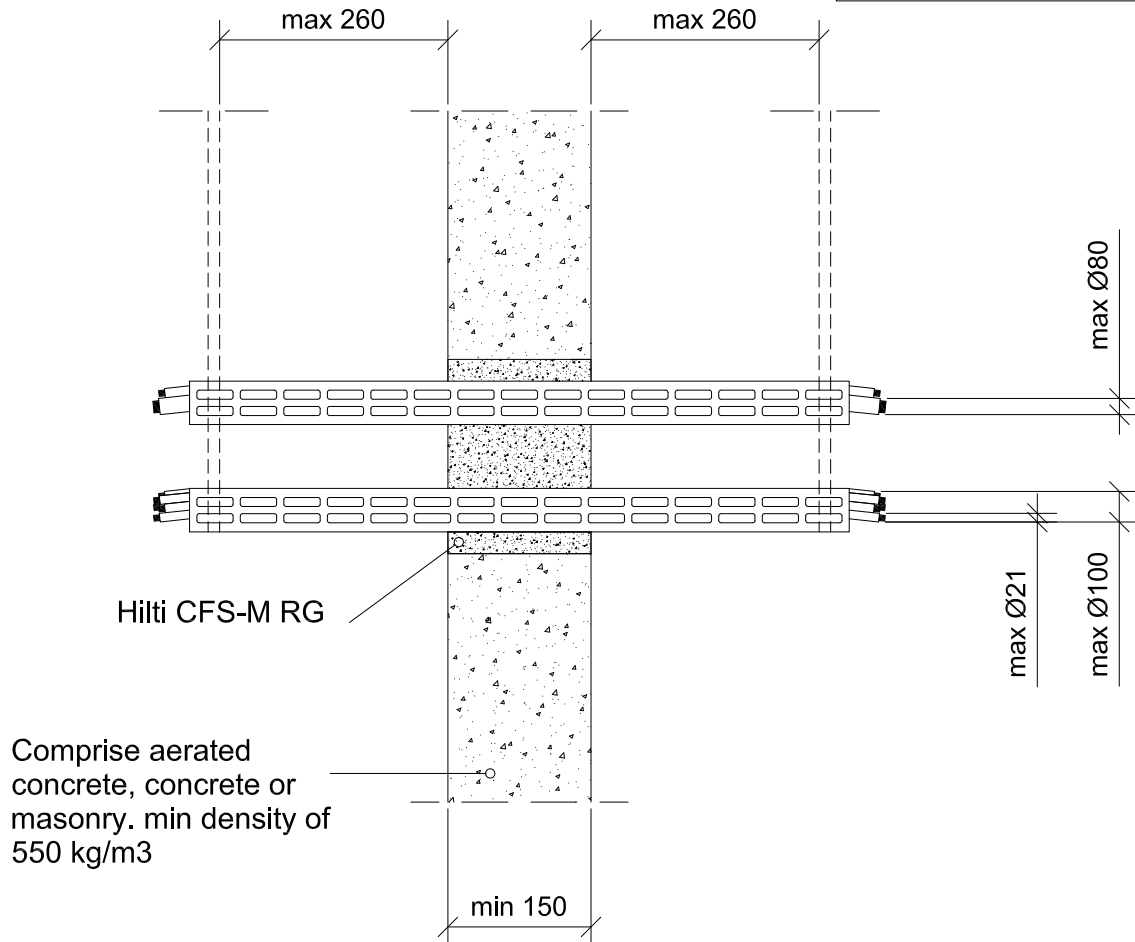
0148\_01

REV  
00

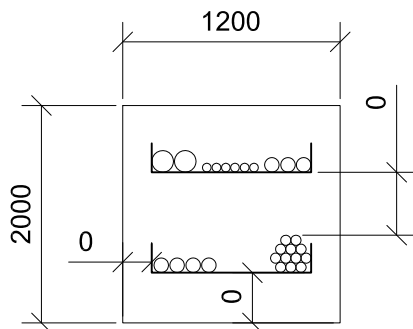
No scale

All units are in millimetres

Fire Rating EI 90



Max. opening (1200x2000) and minimum distance



- Approval ETA-12/0101 of 30/04/2012
- Reaction to fire acc EN 13501-1
- Fire resistance test acc 1366-3
- Installation according to Hilti instructions

Sound Insulation for rigid wall

$D_{n,w} = 59 \text{ dB}$

$R_w = 52 \text{ dB}$



CONTENTS

Multiple in a rigid wall

ID

CAB-RW-MT-0149

FIRESTOP MORTAR

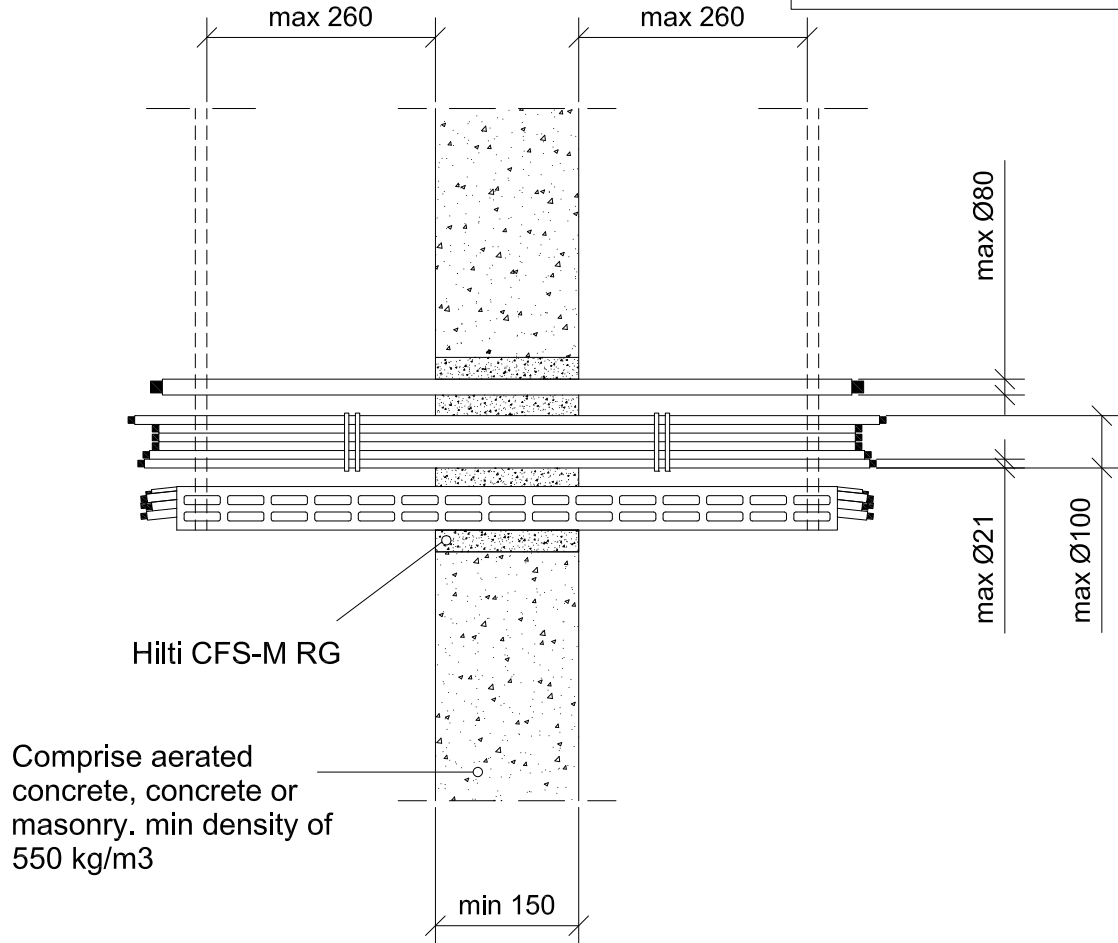
0149\_01

REV  
00

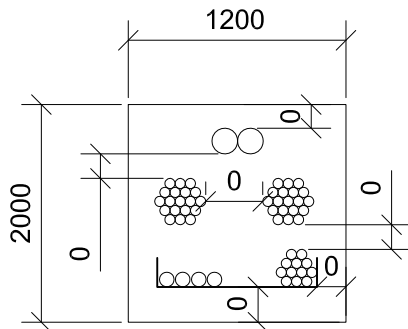
No scale

All units are in millimetres

Fire Rating EI 90



Max. opening (1200x2000) and minimum distance



- Approval ETA-12/0101 of 30/04/2012
- Reaction to fire acc EN 13501-1
- Fire resistance test acc 1366-3
- Installation according to Hilti instructions

Sound Insulation for rigid wall

$D_{n,w} = 59 \text{ dB}$

$R_w = 52 \text{ dB}$



CONTENTS

Single and cable bundles in a rigid wall

ID

CAB-RW-BD-0150

FIRESTOP MORTAR

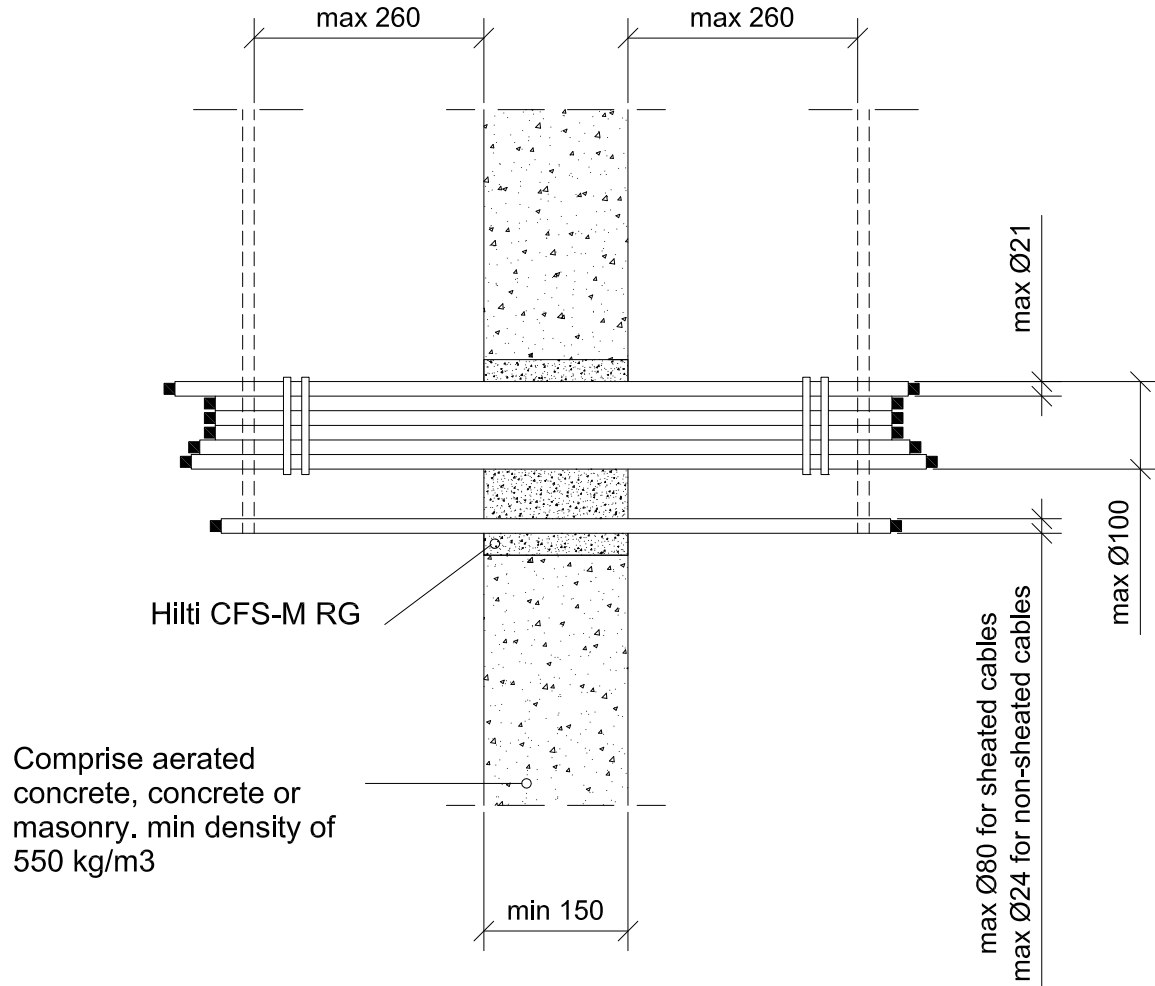
0150\_01

REV 00

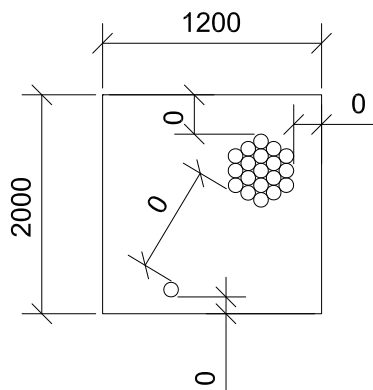
No scale

All units are in millimetres

Fire Rating EI 30



Max. opening (1200x2000) and minimum distance



- Approval ETA-12/0101 of 30/04/2012
- Reaction to fire acc EN 13501-1
- Fire resistance test acc 1366-3
- Installation according to Hilti instructions

Sound Insulation for rigid wall

$$D_{n,w} = 59 \text{ dB}$$

$$R_w = 52 \text{ dB}$$





CONTENTS

Cable tray in a rigid wall

ID

CAB-RW-TR-0151

FIRESTOP MORTAR

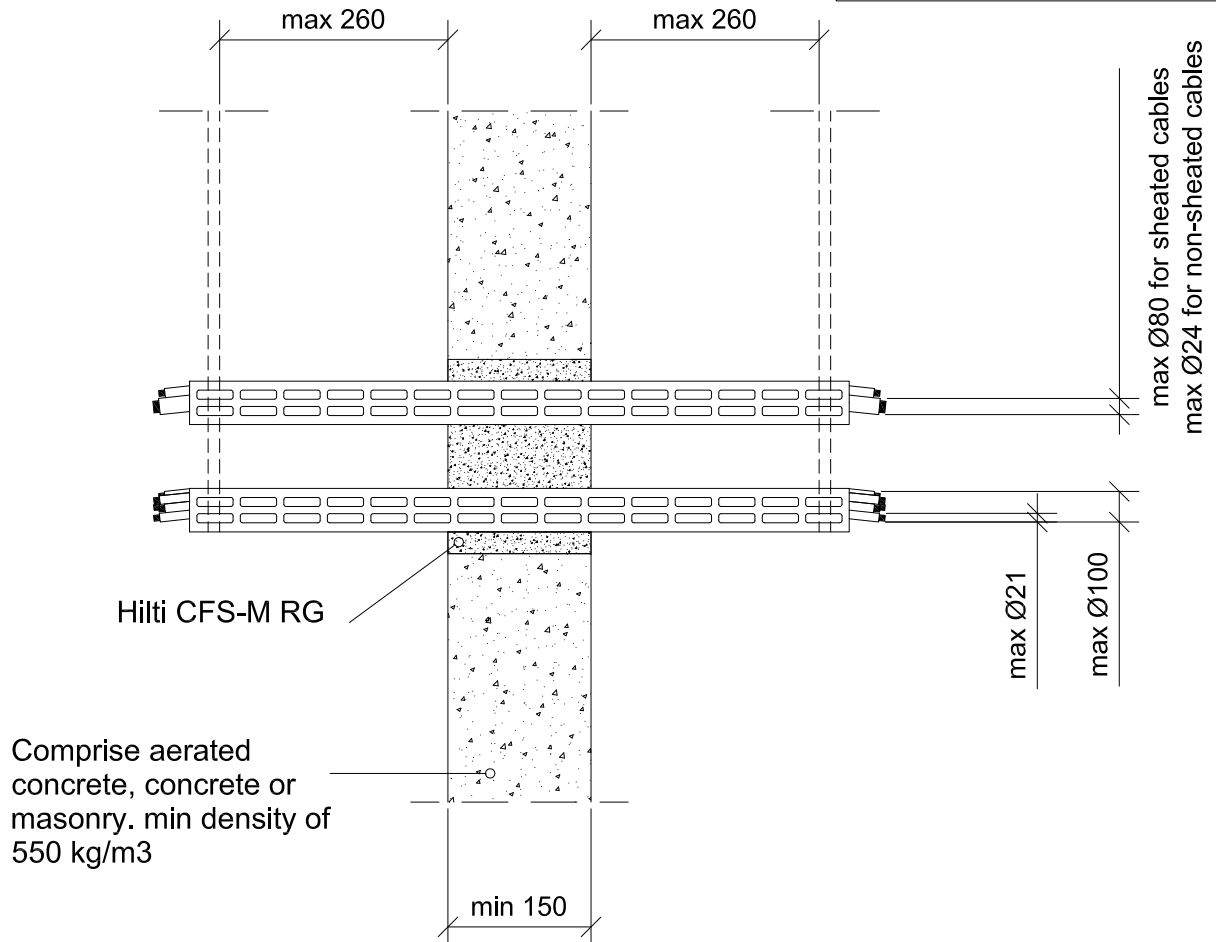
0151\_01

REV  
00

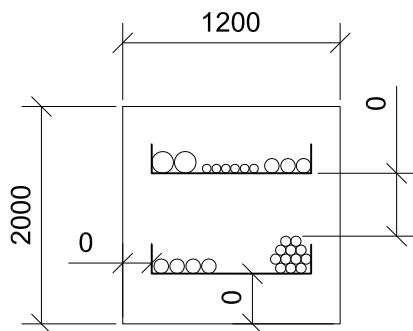
No scale

All units are in millimetres

Fire Rating EI 30



Max. opening (1200x2000) and minimum distance



- Approval ETA-12/0101 of 30/04/2012
- Reaction to fire acc EN 13501-1
- Fire resistance test acc 1366-3
- Installation according to Hilti instructions

Sound Insulation for rigid wall

$D_{n,w} = 59$  dB

$R_w = 52$  dB



CONTENTS

Multiple in a rigid wall

ID

CAB-RW-MT-0152

FIRESTOP MORTAR

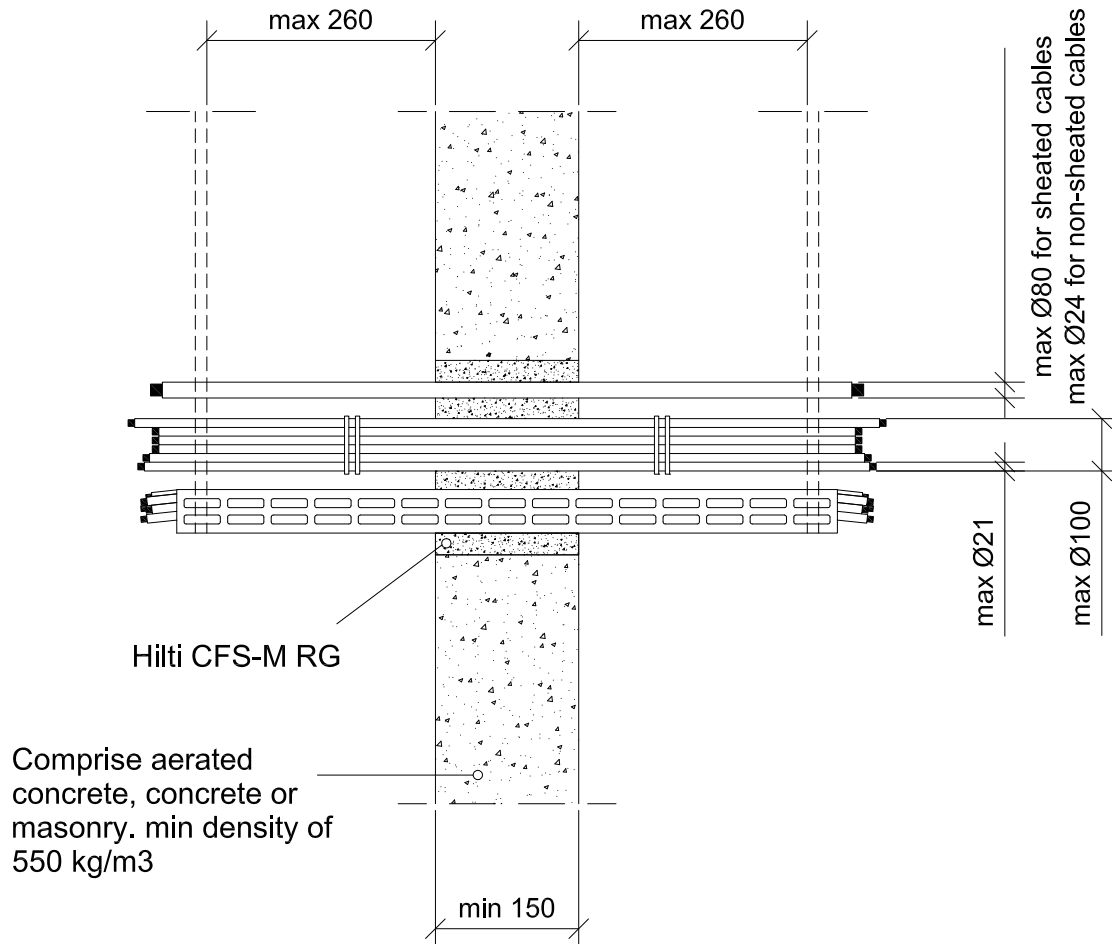
0152\_01

REV  
00

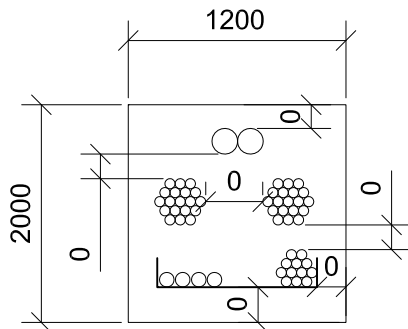
No scale

All units are in millimetres

Fire Rating EI 30



Max. opening (1200x2000) and minimum distance



- Approval ETA-12/0101 of 30/04/2012
- Reaction to fire acc EN 13501-1
- Fire resistance test acc 1366-3
- Installation according to Hilti instructions

Sound Insulation for rigid wall

$D_{n,w} = 59 \text{ dB}$

$R_w = 52 \text{ dB}$



CONTENTS

Steel and plastic conduits in a rigid wall

ID

CAB-RW-CD-0153

FIRESTOP MORTAR

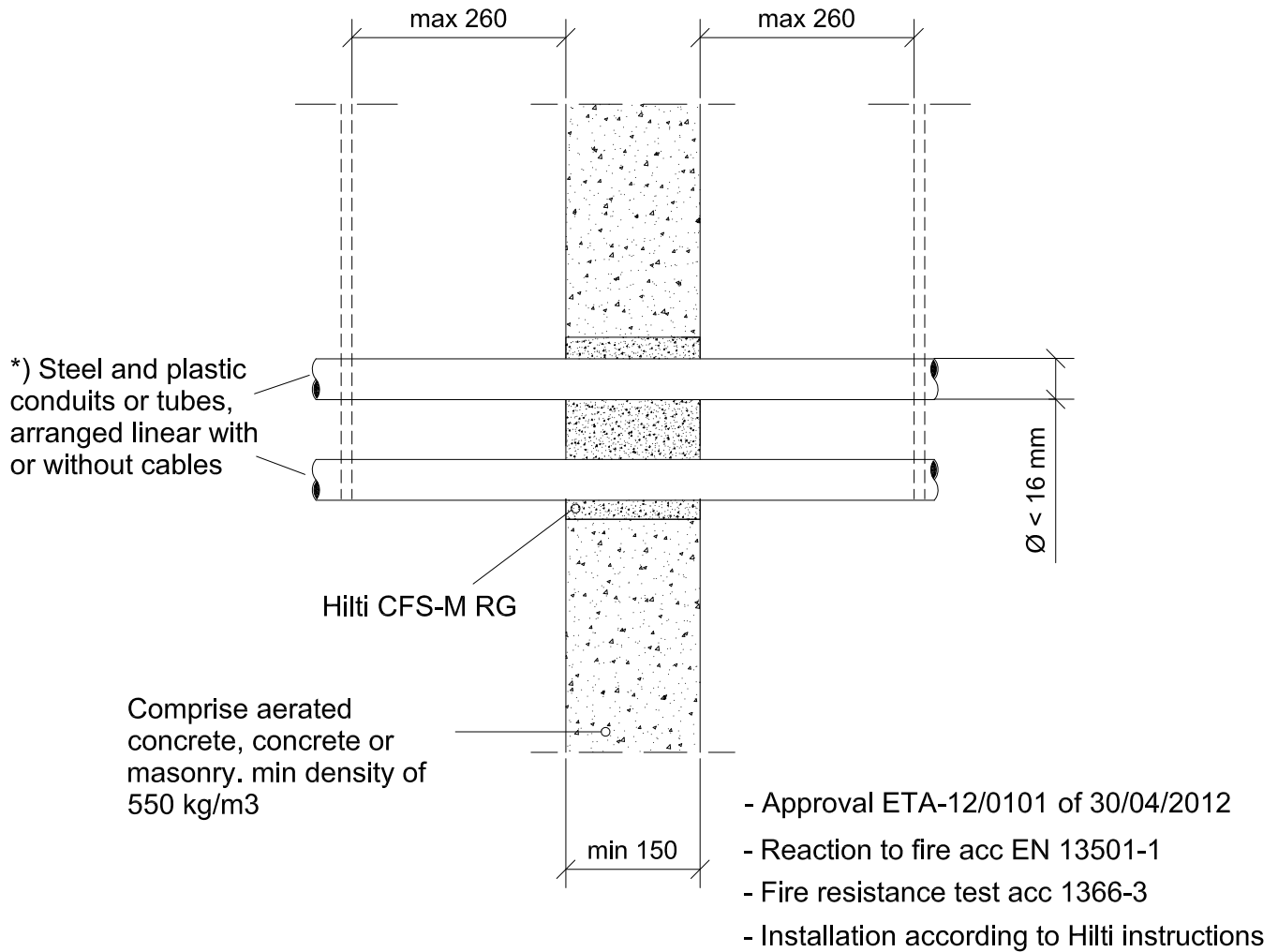
0153\_01

REV 00

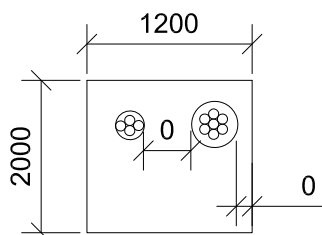
No scale

All units are in millimetres

**\*\*)** Fire Rating EI 180



Max. opening (1200x2000) and minimum distance



\*) In case a conduit is installed with open ends on both sides of the wall (U/U), both ends of the conduit must be closed using an acrylic sealant, CFS-S ACR.

\*\*)

Sound Insulation for rigid wall

**) Fire rating	
Plastic conduits	U/C
Steel conduits	C/U

$D_{n,w}$	= 59 dB
$R_w$	= 52 dB



CONTENTS

Single and cable bundles in a rigid floor

ID

CAB-RF-BD-0154

FIRESTOP MORTAR

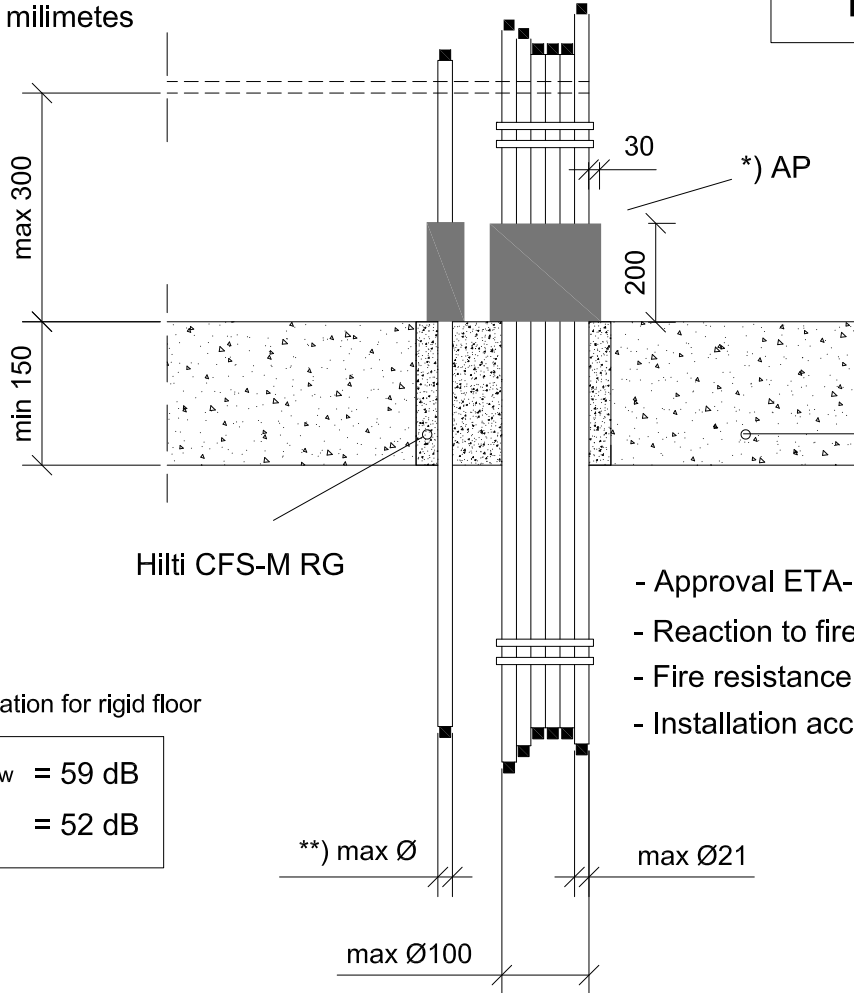
0154\_01

REV 00

No scale

All units are in millimetres

Fire Rating EI 60

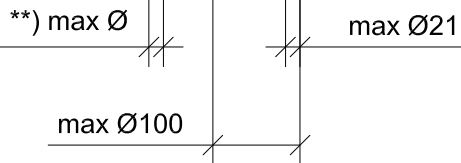


Comprise aerated concrete, concrete or masonry, min density of 550 kg/m<sup>3</sup>

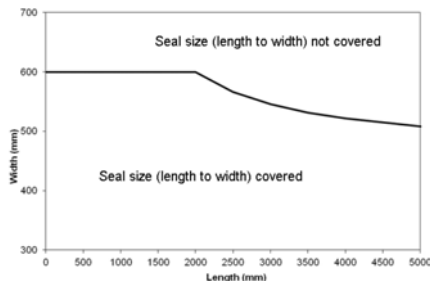
- Approval ETA-12/0101 of 30/04/2012
- Reaction to fire acc EN 13501-1
- Fire resistance test acc 1366-3
- Installation according to Hilti instructions

Sound Insulation for rigid floor

$D_{n,w} = 59 \text{ dB}$   
 $R_w = 52 \text{ dB}$



Max. opening (l x w) and minimum distance



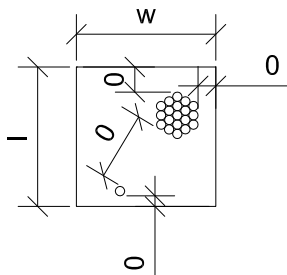
\*) Additional Protection (AP)

Mineral Wool wrapped around cables/cable support, al-faced side outside, fastened with wire.

\*\*) Seal type and Ø cables

	Without AP	Without AP	With AP
Seal thickness	200 a)	150	150
Ø max sheathed cable	80	80	80
Ø max non-sheathed cable	17	—	24
Ø max cable bundle	100	100	100
Ø max cable in a cable bundle	21	21	21

a) Opening depth filled completely with an overlap of the mortar seal of 50 mm over the top side of the floor on all sides of the opening.





CONTENTS

# Cable tray in a rigid floor

ID

CAB-RF-TR-0155

## FIRESTOP MORTAR

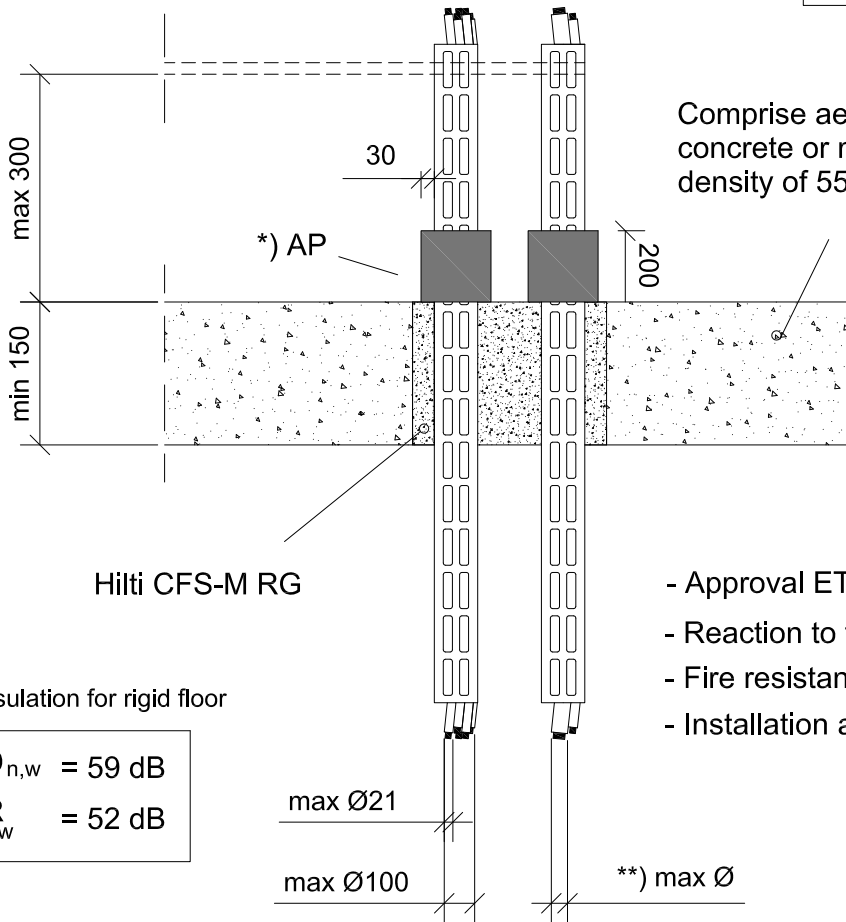
0155\_01

REV  
00

No scale

All units are in millimetres

**Fire Rating EI 60**



Comprise aerated concrete, concrete or masonry. min density of 550 kg/m<sup>3</sup>

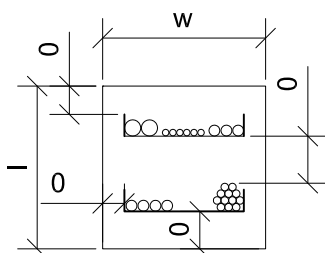
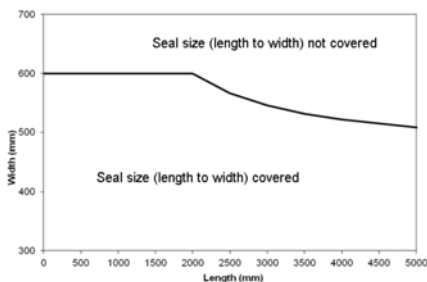
Hilti CFS-M RG

- Approval ETA-12/0101 of 30/04/2012
- Reaction to fire acc EN 13501-1
- Fire resistance test acc 1366-3
- Installation according to Hilti instructions

Sound Insulation for rigid floor

$D_{n,w} = 59 \text{ dB}$   
 $R_w = 52 \text{ dB}$

Max. opening (l x w) and minimum distance



\* ) Additional Protection (AP)

Mineral Wool wrapped around cables/cable support, al-faced side outside, fastened with wire.

\*\* ) Seal type and Ø cables

	Without AP	Without AP	With AP
Seal thickness	200 a)	150	150
Ø max sheathed cable	80	80	80
Ø max non-sheathed cable	17	—	24
Ø max cable bundle	100	100	100
Ø max cable in a cable bundle	21	21	21

a) Opening depth filled completely with an overlap of the mortar seal of 50 mm over the top side of the floor on all sides of the opening.



CONTENTS

Multiple in a rigid floor

ID

CAB-RF-MT-0156

FIRESTOP MORTAR

0156\_01

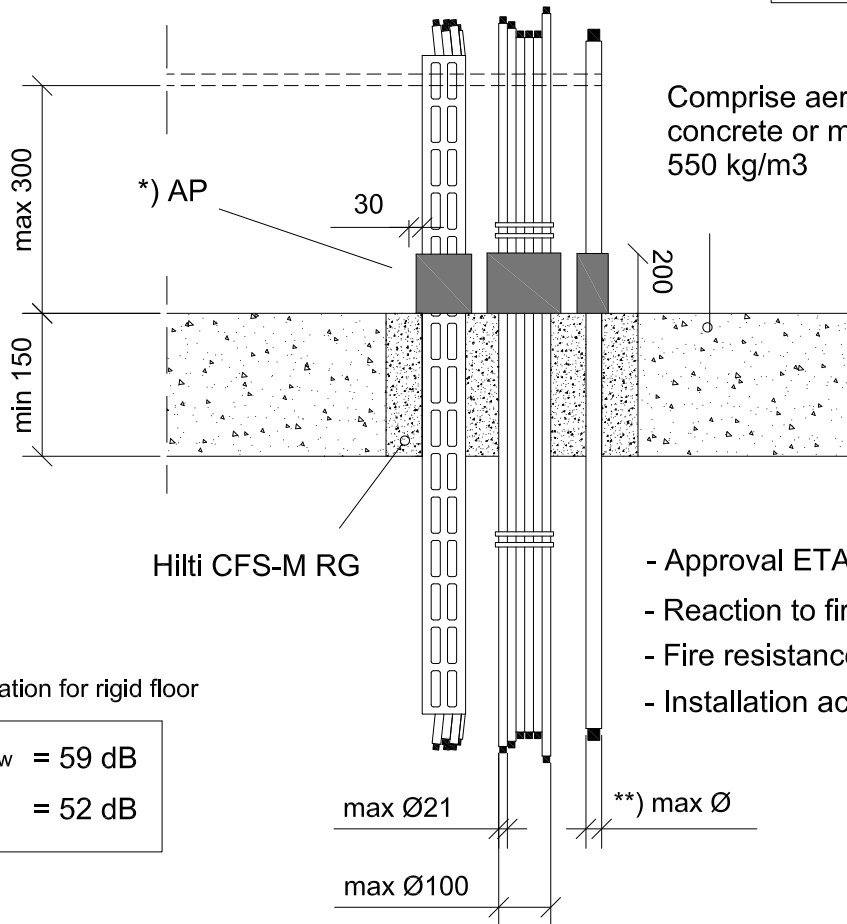
REV

00

No scale

All units are in millimetres

Fire Rating EI 60



Comprise aerated concrete, concrete or masonry, min density of 550 kg/m<sup>3</sup>

\*) AP

30

- Approval ETA-12/0101 of 30/04/2012
- Reaction to fire acc EN 13501-1
- Fire resistance test acc 1366-3
- Installation according to Hilti instructions

Hilti CFS-M RG

Sound Insulation for rigid floor

$D_{n,w} = 59$  dB

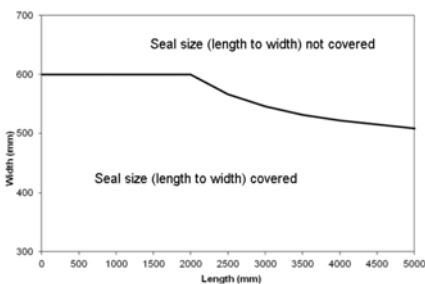
$R_w = 52$  dB

max Ø21

\*\*) max Ø

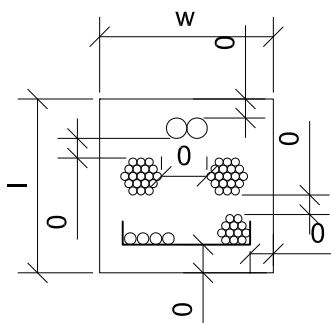
max Ø100

Max. opening (l x w) and minimum distance



\*) Additional Protection (AP)

Mineral Wool wrapped around cables/cable support, al-faced side outside, fastened with wire.



\*\*) Seal type and Ø cables

	Without AP	Without AP	With AP
Seal thickness	200 a)	150	150
Ø max sheathed cable	80	80	80
Ø max non-sheathed cable	17	—	24
Ø max cable bundle	100	100	100
Ø max cable in a cable bundle	21	21	21

a) Opening depth filled completely with an overlap of the mortar seal of 50 mm over the top side of the floor on all sides of the opening.



CONTENTS

Single and cable bundles in a rigid floor

ID

CAB-RF-BD-0157

FIRESTOP MORTAR

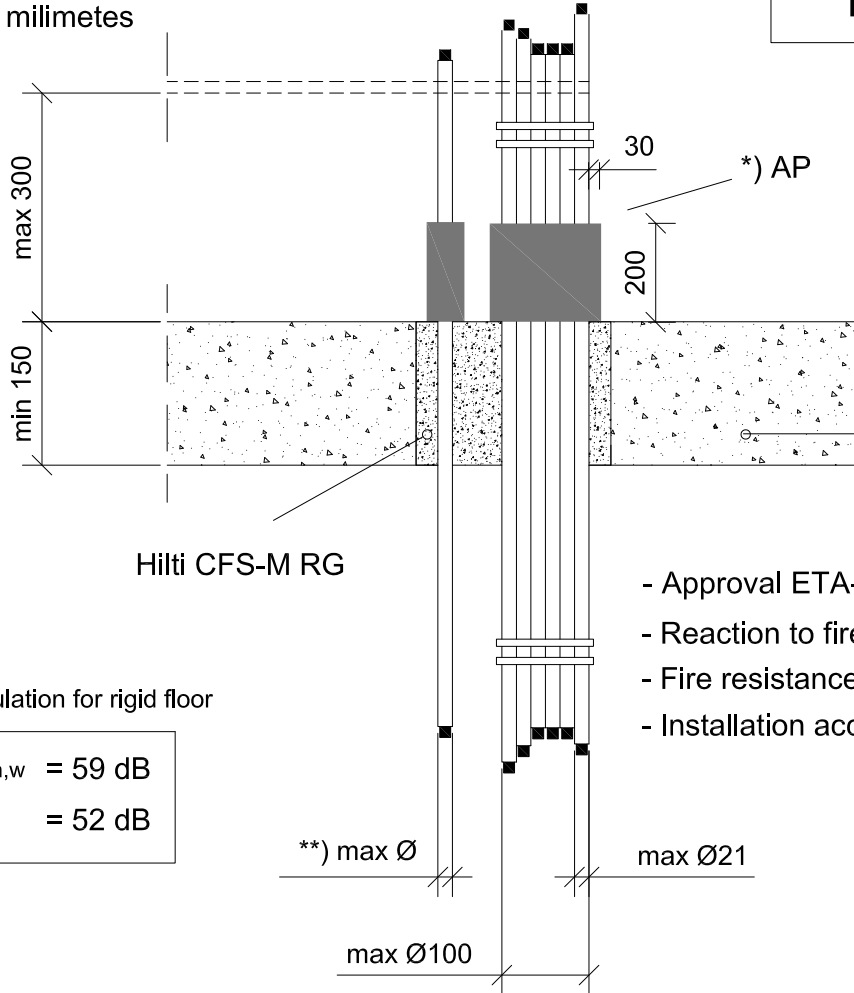
0157\_01

REV 00

No scale

All units are in millimetres

Fire Rating EI 90



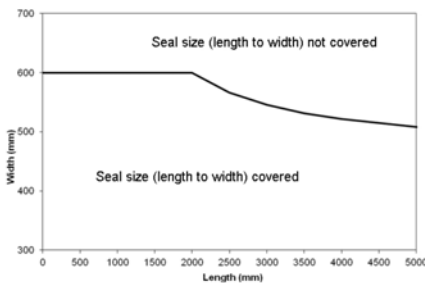
Comprise aerated concrete, concrete or masonry. min density of 550 kg/m<sup>3</sup>

- Approval ETA-12/0101 of 30/04/2012
- Reaction to fire acc EN 13501-1
- Fire resistance test acc 1366-3
- Installation according to Hilti instructions

Sound Insulation for rigid floor

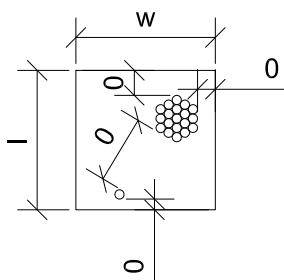
$D_{n,w} = 59 \text{ dB}$   
 $R_w = 52 \text{ dB}$

Max. opening (l x w) and minimum distance



\*) Additional Protection (AP)

Mineral Wool wrapped around cables/cable support, aI-faced side outside, fastened with wire.



\*\*) Seal type and Ø cables

	Without AP	Without AP	With AP
Seal thickness	200 a)	150	150
Ø max sheathed cable	80	21	80
Ø max non-sheathed cable	17	—	17
Ø max cable bundle	100	100	100
Ø max cable in a cable bundle	21	21	21

a) Opening depth filled completely with an overlap of the mortar seal of 50 mm over the top side of the floor on all sides of the opening.



CONTENTS

# Cable tray in a rigid floor

ID

CAB-RF-TR-0158

## FIRESTOP MORTAR

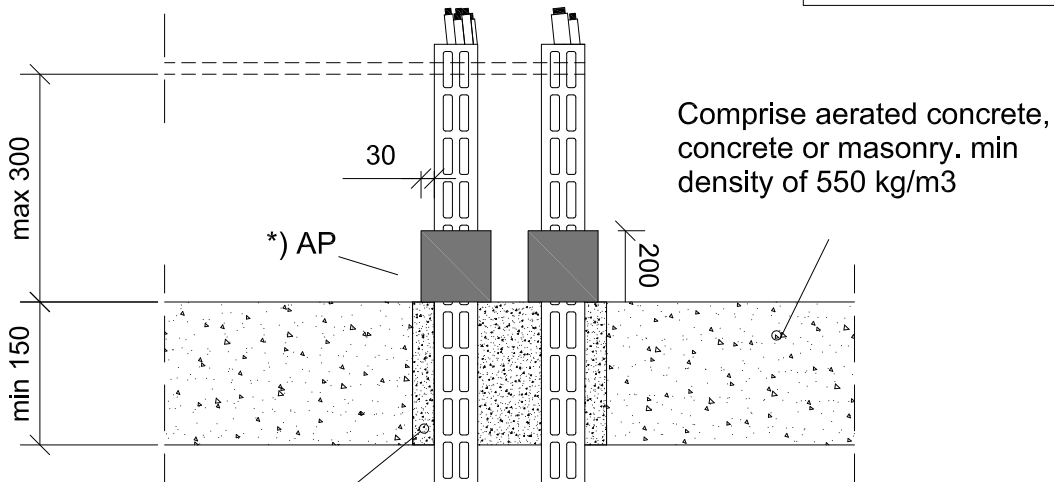
0158\_01

REV  
00

No scale

All units are in millimetres

**Fire Rating EI 90**



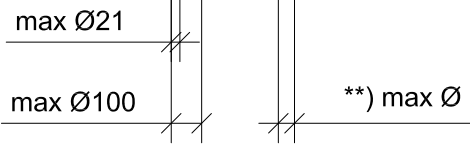
Comprise aerated concrete, concrete or masonry. min density of 550 kg/m<sup>3</sup>

Hilti CFS-M RG

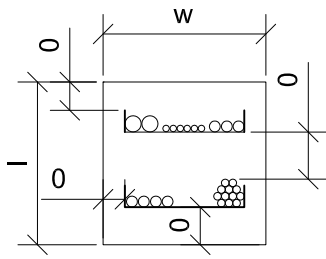
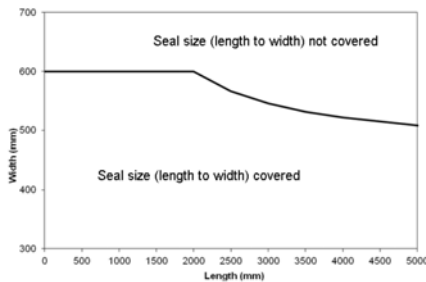
- Approval ETA-12/0101 of 30/04/2012
- Reaction to fire acc EN 13501-1
- Fire resistance test acc 1366-3
- Installation according to Hilti instructions

Sound Insulation for rigid floor

$D_{n,w} = 59 \text{ dB}$   
 $R_w = 52 \text{ dB}$



Max. opening (l x w) and minimum distance



\*) Additional Protection (AP)

Mineral Wool wrapped around cables/cable support, al-faced side outside, fastened with wire.

\*\*) Seal type and Ø cables

	Without AP	Without AP	With AP
Seal thickness	200 a)	150	150
Ø max sheathed cable	80	21	80
Ø max non-sheathed cable	17	—	17
Ø max cable bundle	100	100	100
Ø max cable in a cable bundle	21	21	21

a) Opening depth filled completely with an overlap of the mortar seal of 50 mm over the top side of the floor on all sides of the opening.





CONTENTS

Multiple in a rigid floor

ID

CAB-RF-MT-0159

FIRESTOP MORTAR

0159\_01

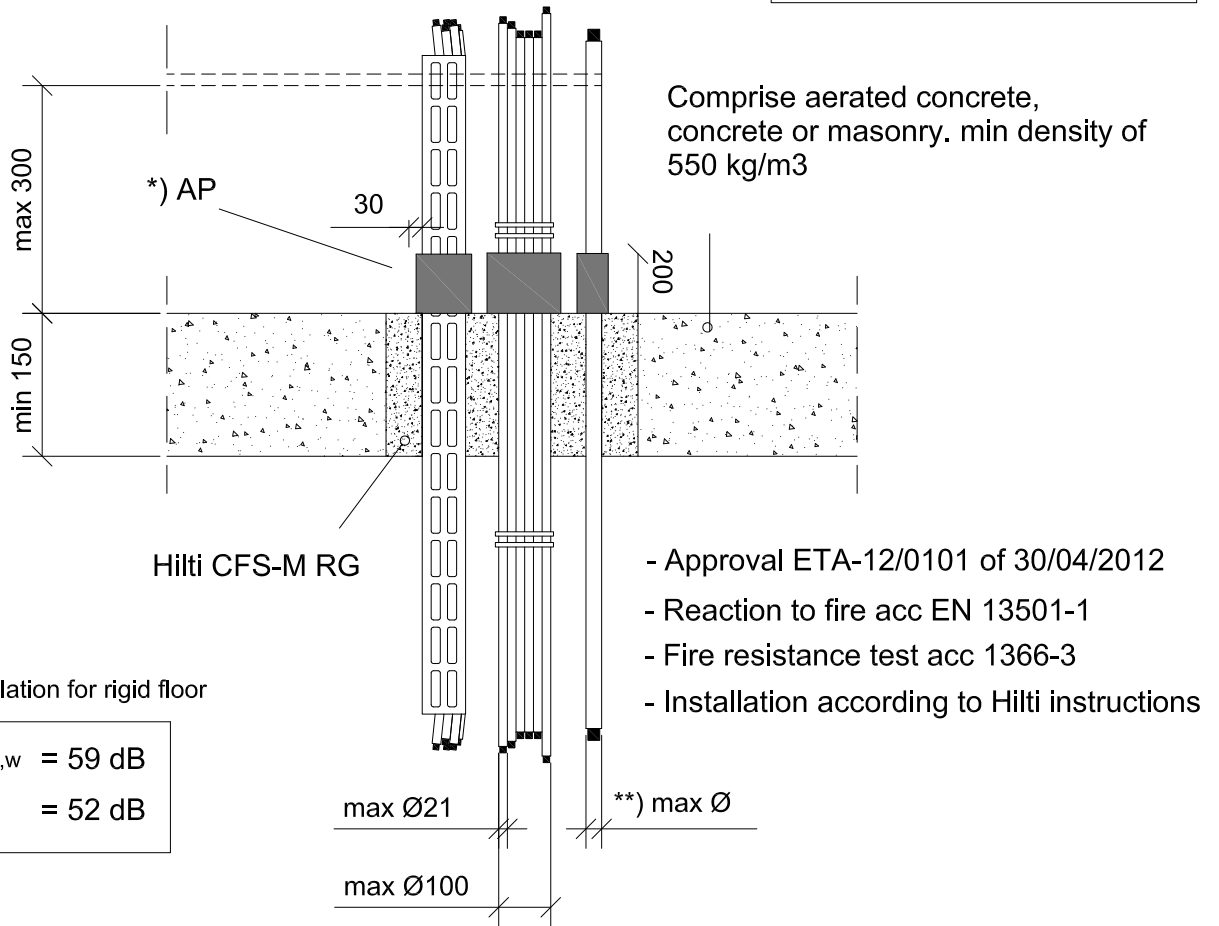
REV

00

No scale

All units are in millimetres

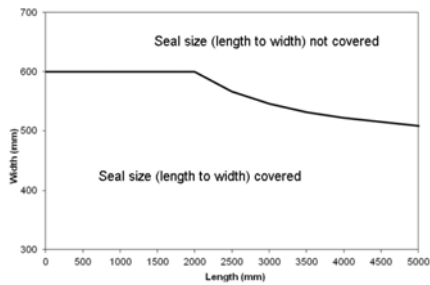
Fire Rating EI 90



Sound Insulation for rigid floor

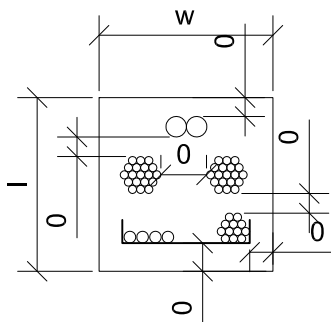
$D_{n,w} = 59 \text{ dB}$   
 $R_w = 52 \text{ dB}$

Max. opening (l x w) and minimum distance



\*) Additional Protection (AP)

Mineral Wool wrapped around cables/cable support, al-faced side outside, fastened with wire.



\*\*) Seal type and Ø cables

	Without AP	Without AP	With AP
Seal thickness	200 a)	150	150
Ø max sheathed cable	80	21	80
Ø max non-sheathed cable	17	—	17
Ø max cable bundle	100	100	100
Ø max cable in a cable bundle	21	21	21

a) Opening depth filled completely with an overlap of the mortar seal of 50 mm over the top side of the floor on all sides of the opening.



CONTENTS

Single and cable bundles in a rigid floor

ID

CAB-RF-BD-0160

FIRESTOP MORTAR

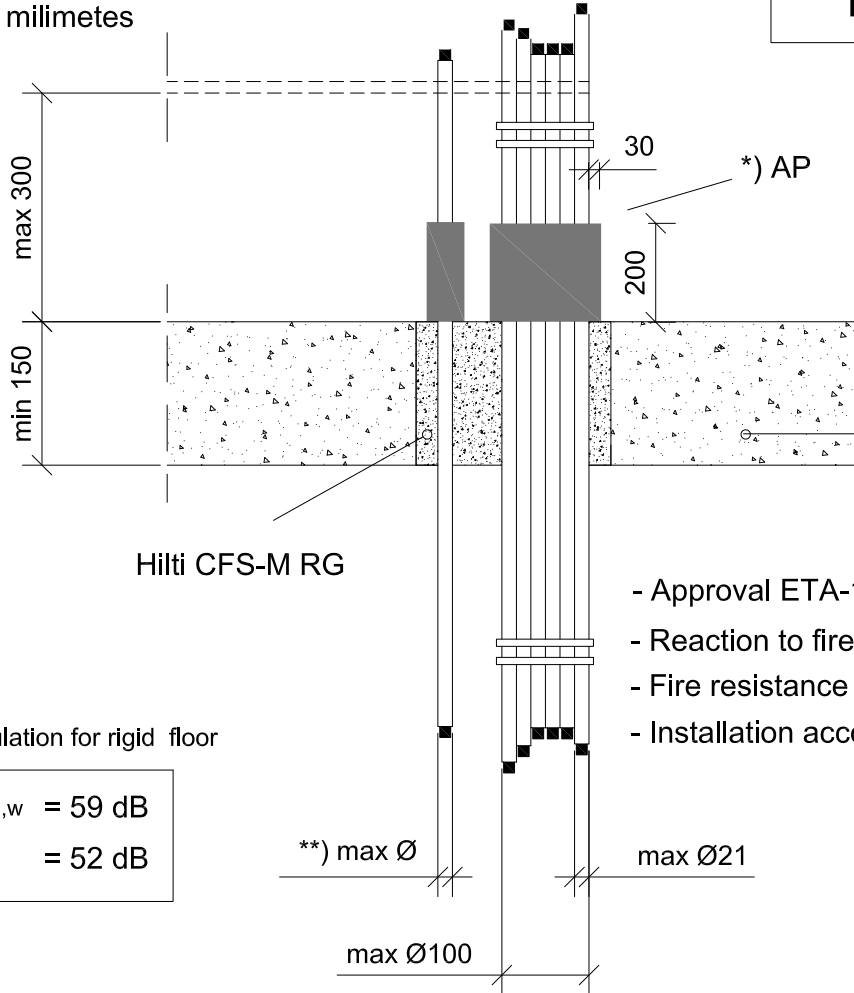
0160\_01

REV 00

No scale

All units are in millimetres

Fire Rating EI 45

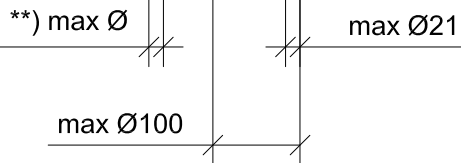


Comprise aerated concrete, concrete or masonry, min density of 550 kg/m<sup>3</sup>

- Approval ETA-12/0101 of 30/04/2012
- Reaction to fire acc EN 13501-1
- Fire resistance test acc 1366-3
- Installation according to Hilti instructions

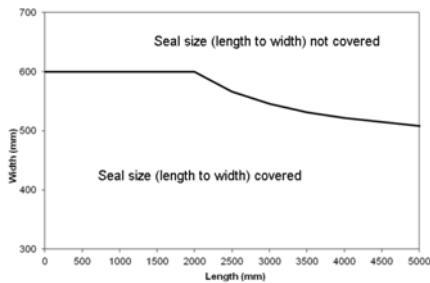
Sound Insulation for rigid floor

$D_{n,w} = 59 \text{ dB}$   
 $R_w = 52 \text{ dB}$

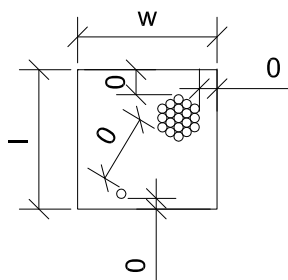


Max. opening (l x w) and minimum distance

\*) Additional Protection (AP)



Mineral Wool wrapped around cables/cable support, al-faced side outside, fastened with wire.



\*\*) Seal type and Ø cables

	Without AP	Without AP	With AP
Seal thickness	200 a)	150	150
Ø max sheathed cable	80	80	80
Ø max non-sheathed cable	24	24	24
Ø max cable bundle	100	100	100
Ø max cable in a cable bundle	21	21	21

a) Opening depth filled completely with an overlap of the mortar seal of 50 mm over the top side of the floor on all sides of the opening.



CONTENTS

# Cable tray in a rigid floor

ID

CAB-RF-TR-0161

## FIRESTOP MORTAR

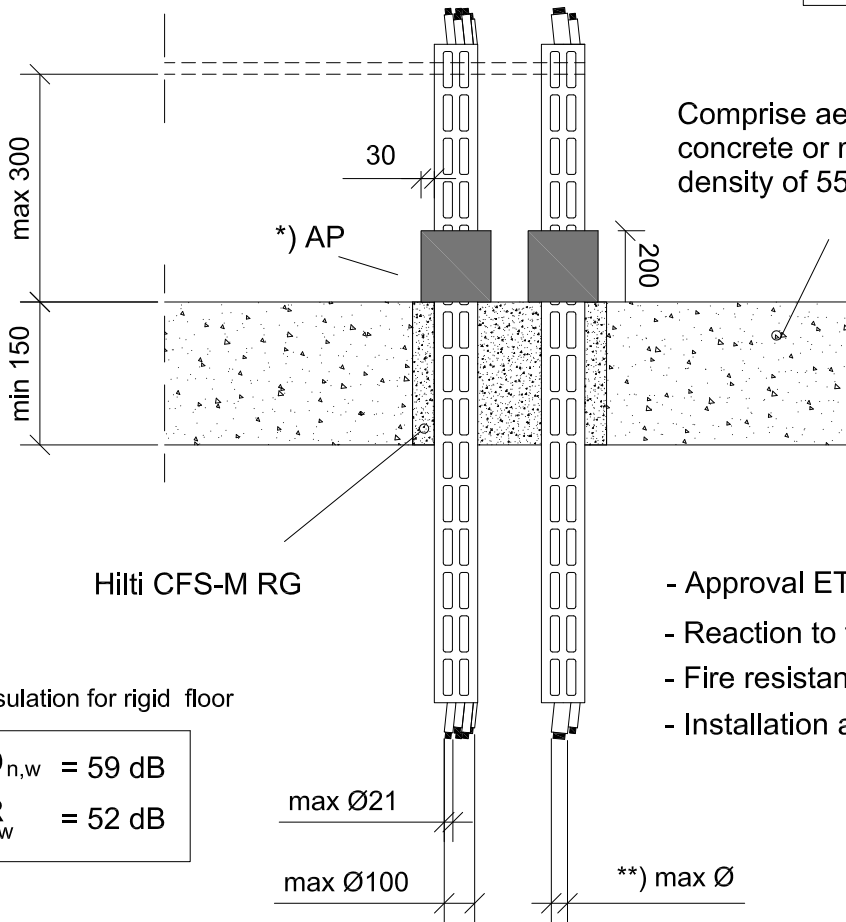
0161\_01

REV  
00

No scale

All units are in millimetres

**Fire Rating EI 45**



Comprise aerated concrete, concrete or masonry. min density of 550 kg/m<sup>3</sup>

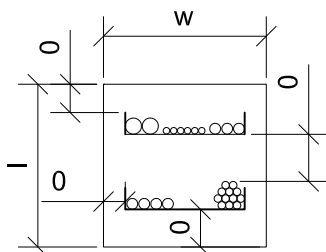
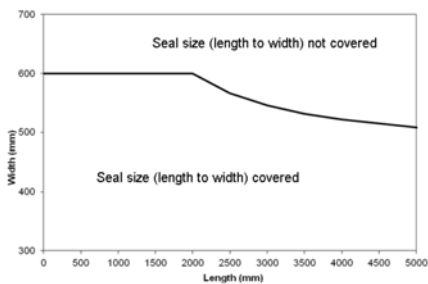
Hilti CFS-M RG

- Approval ETA-12/0101 of 30/04/2012
- Reaction to fire acc EN 13501-1
- Fire resistance test acc 1366-3
- Installation according to Hilti instructions

Sound Insulation for rigid floor

$D_{n,w} = 59 \text{ dB}$   
 $R_w = 52 \text{ dB}$

Max. opening (l x w) and minimum distance



\*) Additional Protection (AP)

Mineral Wool wrapped around cables/cable support, all-faced side outside, fastened with wire.

\*\*) Seal type and Ø cables

	Without AP	Without AP	With AP
Seal thickness	200 a)	150	150
Ø max sheathed cable	80	80	80
Ø max non-sheathed cable	24	24	24
Ø max cable bundle	100	100	100
Ø max cable in a cable bundle	21	21	21

a) Opening depth filled completely with an overlap of the mortar seal of 50 mm over the top side of the floor on all sides of the opening.



CONTENTS

Multiple in a rigid floor

ID

CAB-RF-MT-0162

FIRESTOP MORTAR

0162\_01

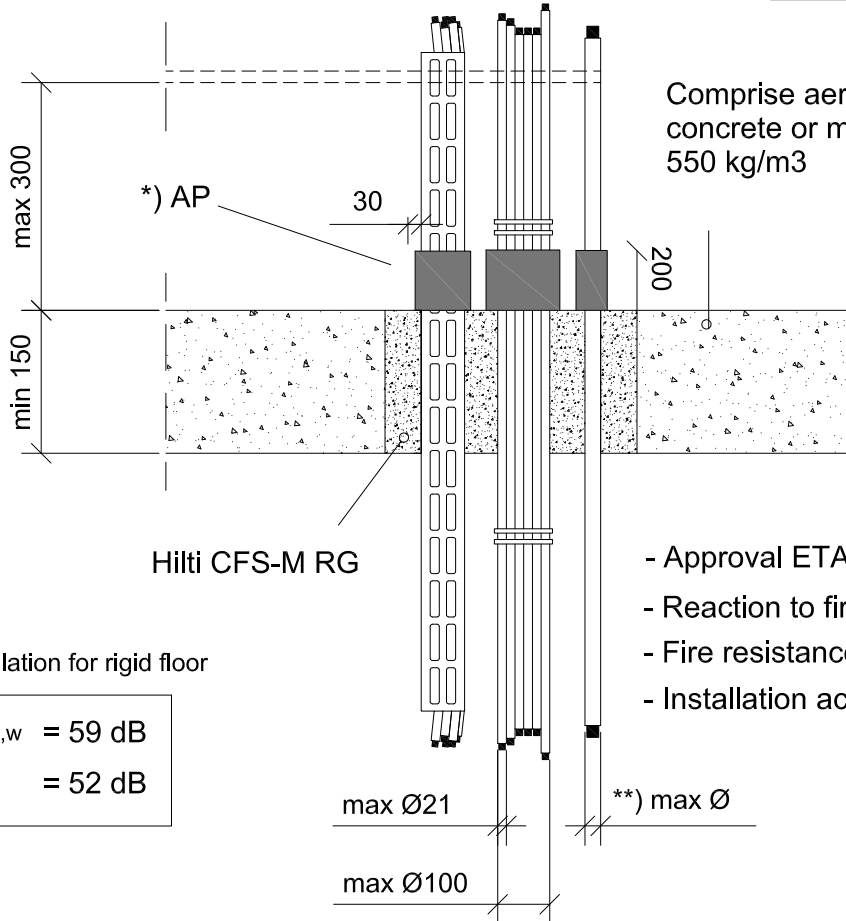
REV

00

No scale

All units are in millimetres

Fire Rating EI 45



Comprise aerated concrete, concrete or masonry, min density of 550 kg/m<sup>3</sup>

\*) AP

30

200

max 300

min 150

Hilti CFS-M RG

- Approval ETA-12/0101 of 30/04/2012
- Reaction to fire acc EN 13501-1
- Fire resistance test acc 1366-3
- Installation according to Hilti instructions

Sound Insulation for rigid floor

$D_{n,w} = 59 \text{ dB}$

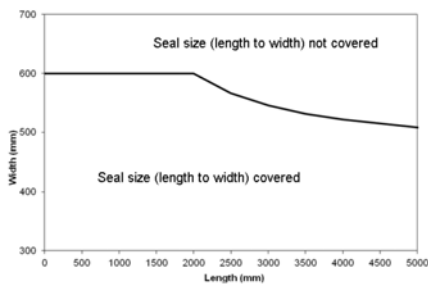
$R_w = 52 \text{ dB}$

max Ø21

\*\*) max Ø

max Ø100

Max. opening (l x w) and minimum distance



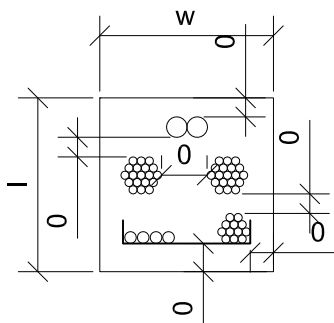
\*) Additional Protection (AP)

Mineral Wool wrapped around cables/cable support, all-faced side outside, fastened with wire.

\*\*) Seal type and Ø cables

	Without AP	Without AP	With AP
Seal thickness	200 a)	150	150
Ø max sheathed cable	80	80	80
Ø max non-sheathed cable	24	24	24
Ø max cable bundle	100	100	100
Ø max cable in a cable bundle	21	21	21

a) Opening depth filled completely with an overlap of the mortar seal of 50 mm over the top side of the floor on all sides of the opening.





CONTENTS

Steel and plastic conduits in a rigid floor

ID

CAB-RF-CD-0163

FIRESTOP MORTAR

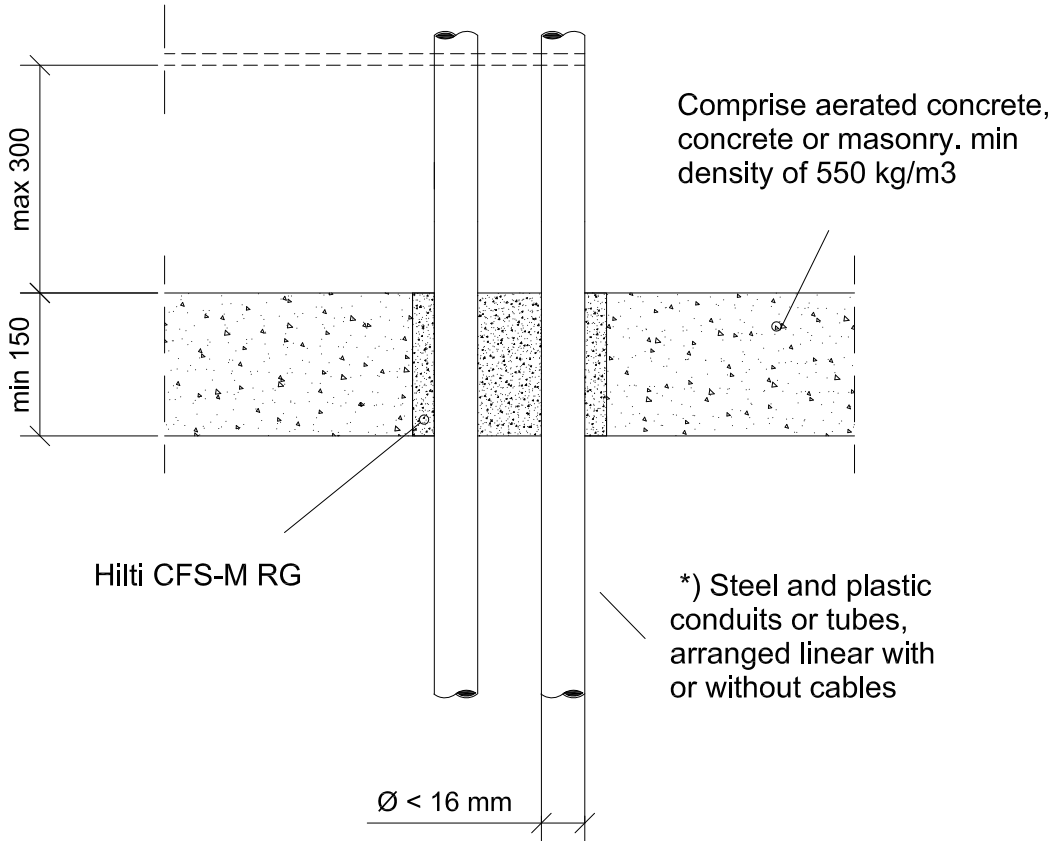
0163\_01

REV 00

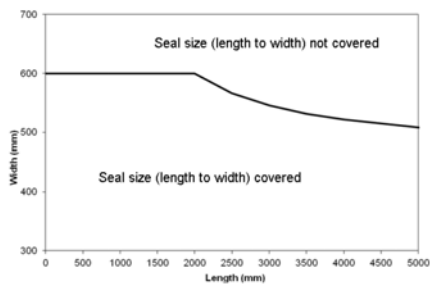
No scale

All units are in millimetres

**\*\* ) Fire Rating EI 90**

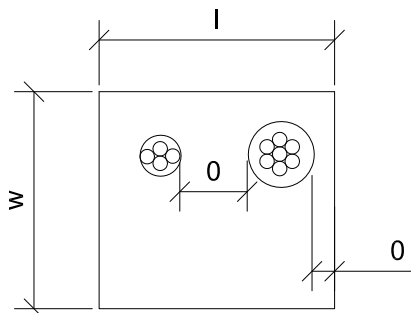


Max. opening (l x w) and minimum distance



\* ) In case a conduit is installed with open ends on both sides (U/U), conduit must be closed with Hilti Firestop Acrylic Sealant CFS-S ACR.

- Approval ETA-12/0101 of 30/04/2012
- Reaction to fire acc EN 13501-1
- Fire resistance test acc 1366-3
- Installation according to Hilti instructions



Sound Insulation for rigid floor

\*\* ) Fire rating

$D_{n,w} = 59 \text{ dB}$
$R_w = 52 \text{ dB}$

Plastic conduits	U/C
Steel conduits	C/U



CONTENTS

Steel and plastic conduits a rigid floor

ID

CAB-RF-CD-0164

FIRESTOP MORTAR

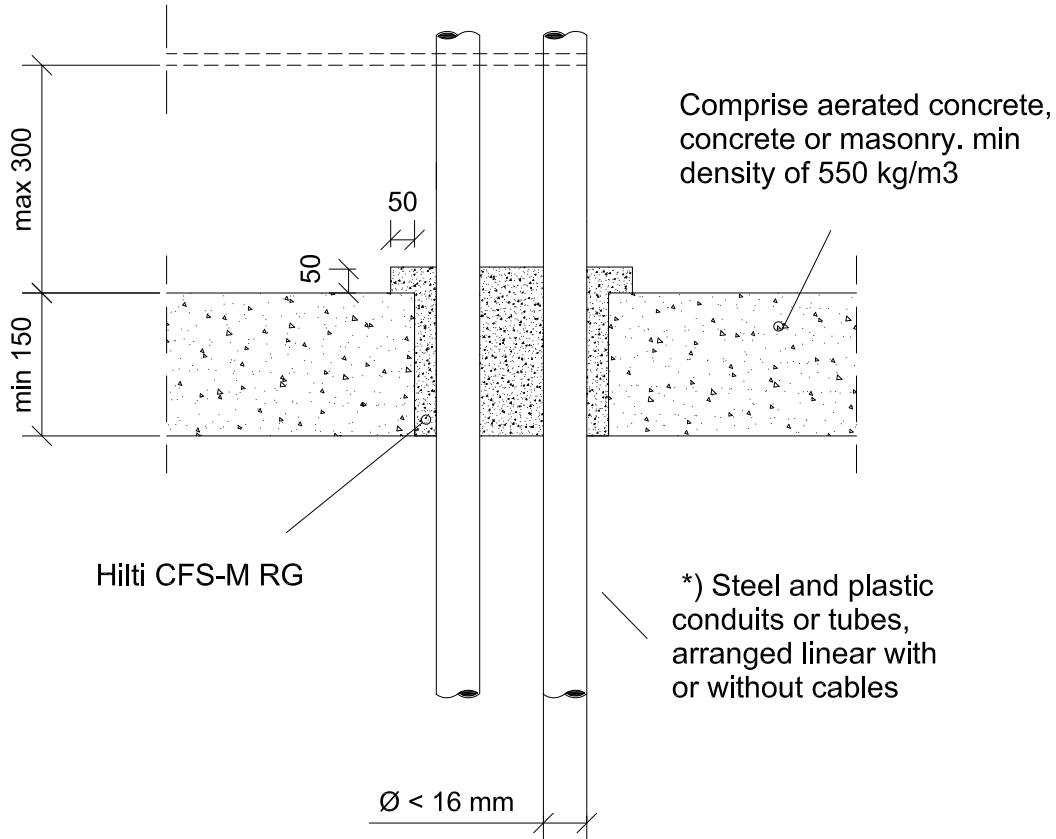
0164\_01

REV 00

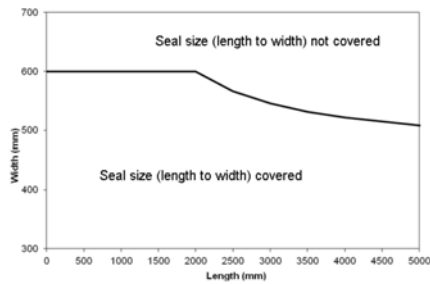
No scale

All units are in millimetres

**\*\*)** Fire Rating EI 120

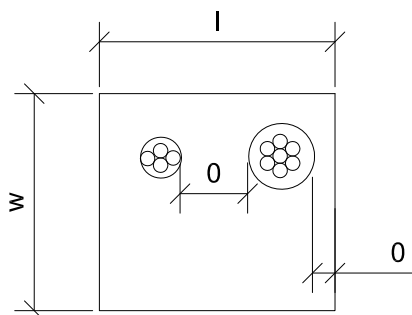


Max. opening (l x w) and minimum distance



\* ) In case a conduit is installed with open ends on both sides (U/U), conduit must be closed with Hilti Firestop Acrylic Sealant CFS-S ACR.

- Approval ETA-12/0101 of 30/04/2012
- Reaction to fire acc EN 13501-1
- Fire resistance test acc 1366-3
- Installation according to Hilti instructions



Sound Insulation for rigid floor

\*\* ) Fire rating

$D_{n,w} = 59 \text{ dB}$

$R_w = 52 \text{ dB}$

Plastic conduits	U/C
Steel conduits	C/U