

Schémas d'application pour le bouchon coupe-feu CFS-PL



Applications pour câbles unitaires, bottes de câbles et conduits acier et plastique

Câbles unitaires et bottes de câbles

- Application en cloison épaisseur 100 mm (dimensions maximum de l'ouverture \varnothing 52-150) CAB-FW-BD-0057/58/59
- Application en voile rigide épaisseur 100 mm (dimensions maximum de l'ouverture \varnothing 52-150) CAB-RW-BD-0061/62/63
- Application en voile rigide épaisseur 150 mm (dimensions maximum de l'ouverture \varnothing 52-150) CAB-RF-BD-0065/66/67

Conduits acier et plastique

- Application en cloison épaisseur 100 mm (dimensions maximum de l'ouverture \varnothing 52-150) CAB-FW-CD-0060
- Application en voile rigide épaisseur 100 mm (dimensions maximum de l'ouverture \varnothing 52-150) CAB-RW-CD-0064
- Application en voile rigide épaisseur 150 mm (dimensions maximum de l'ouverture \varnothing 52-150) CAB-RF-CD-0068

*) Tous les schémas sont également disponibles sur demande en format DWG pour faciliter l'insertion sur des plans.



CONTENTS

Single and cable bundles in a flexible wall

ID

CAB-FW-BD-0057

FIRESTOP PLUG

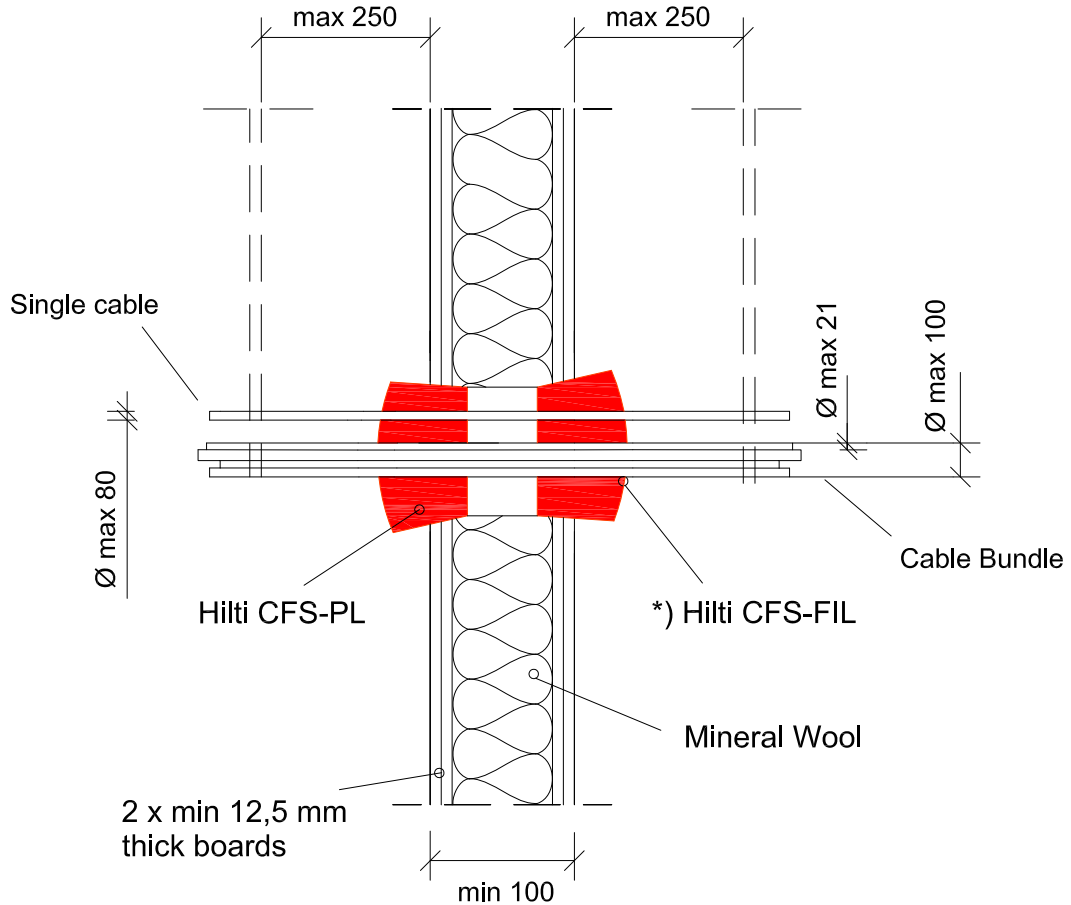
0057_01

REV 00

No scale

All units are in milimetres

Fire Rating EI 90



*) Annular gap fill material

Gaps between services and Hilti Firestop Plugs are filled with Hilti Firestop Filler, depth 20 mm

Opening Size: Ø 52-250 mm

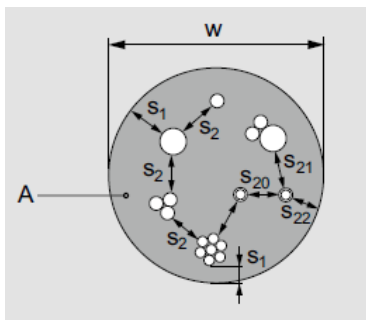
- Approval ETA-13/0125 of 15/04/2013

- Reaction to fire acc EN 13501-1

- Fire resistance test acc 1366-3

- Installation according to Hilti instructions

Distance Requirements



- s1 = 0 (dist. between cables and seal edge)
- s2 = 0 (dist. between cables)
- s20,21,22 = 0 (conduits Ø < 16 mm, dist between conduits to each other)
- s20 = 0 (conduits Ø > 16 mm, dist between conduits to each other)
- s21,22 = 20 (conduits Ø > 16 mm, dist between conduits and other services or seal edges)



CONTENTS

Single and cable bundles in a flexible wall

ID

CAB-FW-BD-0058

FIRESTOP PLUG

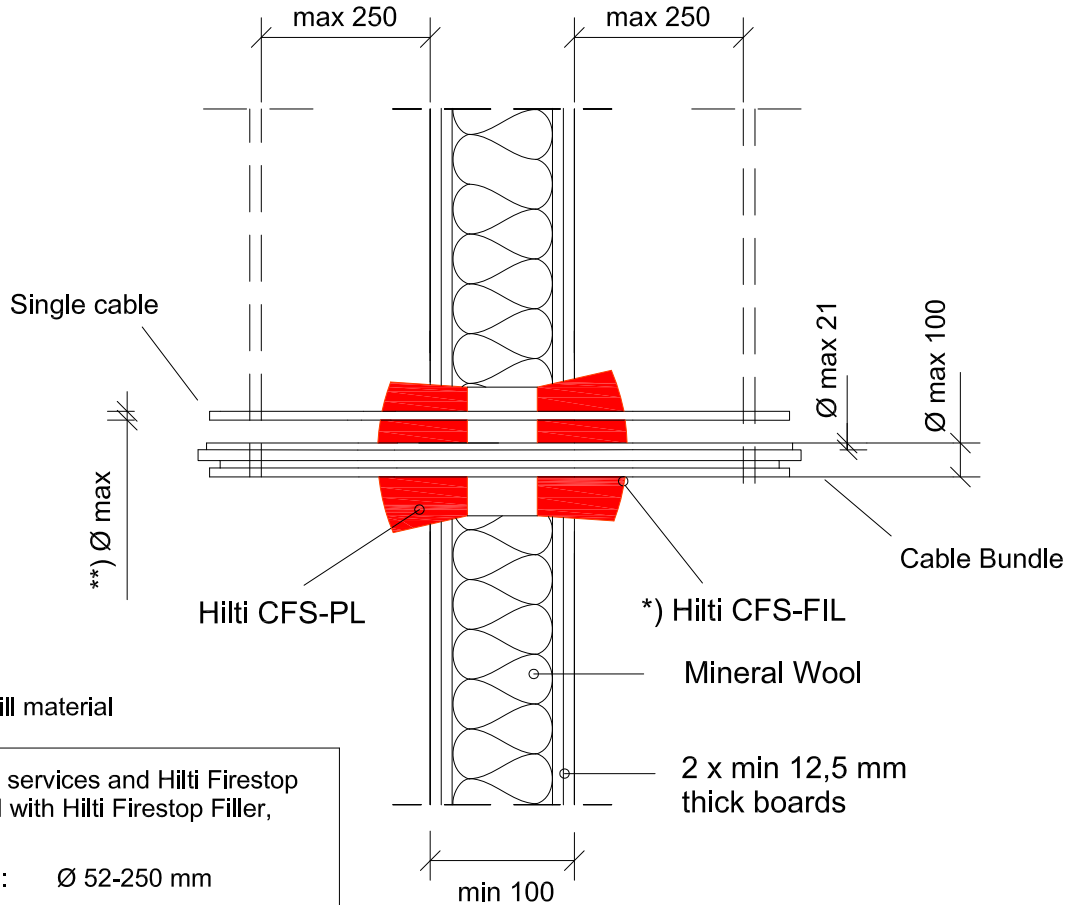
0058_01

REV 00

No scale

All units are in milimetres

Fire Rating EI 60



*) Annular gap fill material

Gaps between services and Hilti Firestop Plugs are filled with Hilti Firestop Filler, depth 20 mm

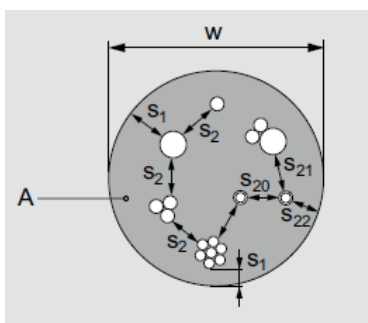
Opening Size: Ø 52-250 mm

**) Ø cables

Ø max single sheated cable	80
Ø max single non- sheated cable	24
Ø max cable bundle	100
Ø max for a cable in a cable bundle	21

- Approval ETA-13/0125 of 15/04/2013
- Reaction to fire acc EN 13501-1
- Fire resistance test acc 1366-3
- Installation according to Hilti instructions

Distance Requirements



- s1 = 0 (dist. between cables and seal edge)
- s2 = 0 (dist. between cables)
- s20, s21, s22 = 0 (conduits Ø < 16 mm, dist between conduits to each other)
- s20 = 0 (conduits Ø > 16 mm, dist between conduits to each other)
- s21, s22 = 20 (conduits Ø > 16 mm, dist between conduits and other services or seal edges)



CONTENTS

Single and cable bundles in a flexible wall

ID

CAB-FW-BD-0059

FIRESTOP PLUG

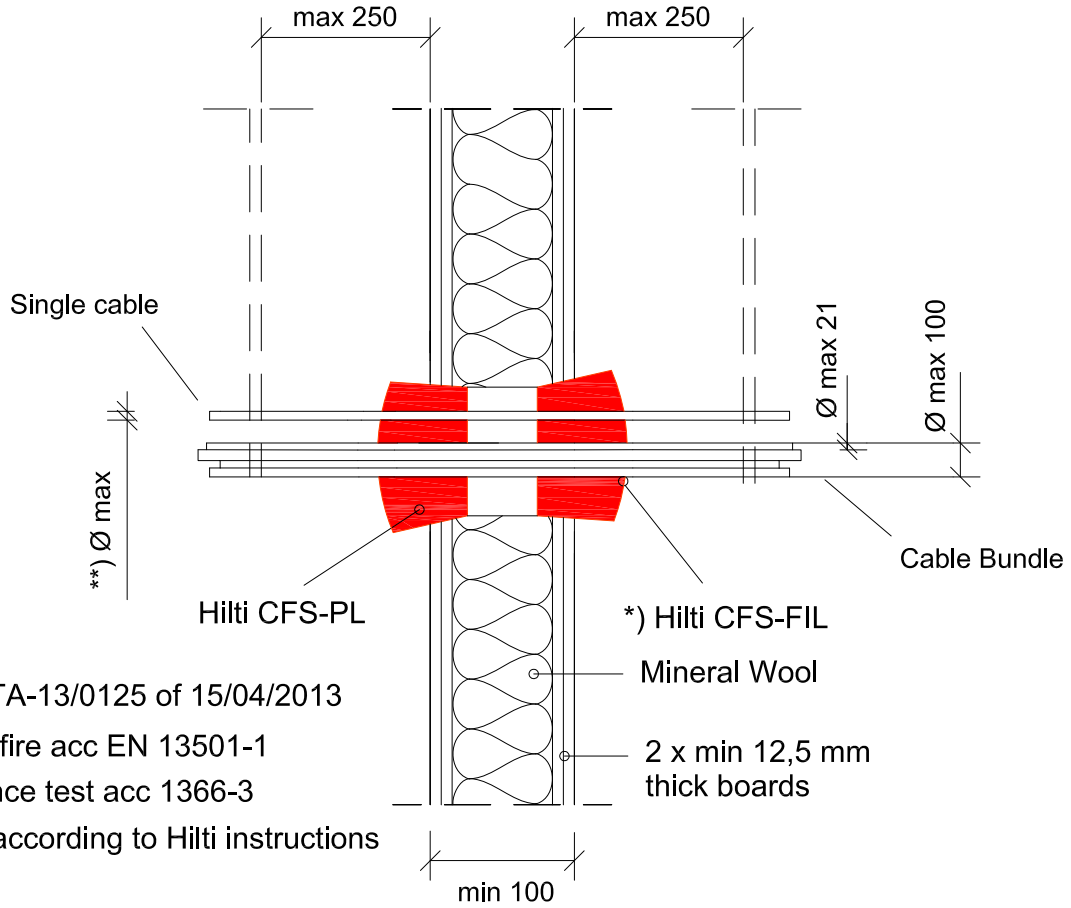
0059_01

REV 00

No scale

All units are in milimetres

Fire Rating EI 120



- Approval ETA-13/0125 of 15/04/2013
- Reaction to fire acc EN 13501-1
- Fire resistance test acc 1366-3
- Installation according to Hilti instructions

*) Annular gap fill material

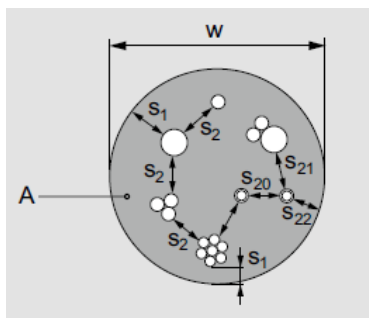
Gaps between services and Hilti Firestop Plugs are filled with Hilti Firestop Filler, depth 20 mm
Opening Size: Ø 52-250 mm

**) Ø cables

	Filler	Filler+2putty a)
Ø max single sheated cable	21	50
Ø max single non- sheated cable	---	---
Ø max cable bundle	100	---
Ø max for a cable in a cable bundle	21	---

a) Two layers of CFS-P BA are wrapped around the services or group of services.

Distance Requirements



- s1 = 0 (dist. between cables and seal edge)
- s2 = 0 (dist. between cables)
- s20,21,22 = 0 (conduits Ø < 16 mm, dist between conduits to each other)
- s20 = 0 (conduits Ø > 16 mm, dist between conduits to each other)
- s21,22 = 20 (conduits Ø > 16 mm, dist between conduits and other services or seal edges)



CONTENTS

Steel and plastic conduits in a flexible wall

ID

CAB-FW-CD-0060

FIRESTOP PLUG

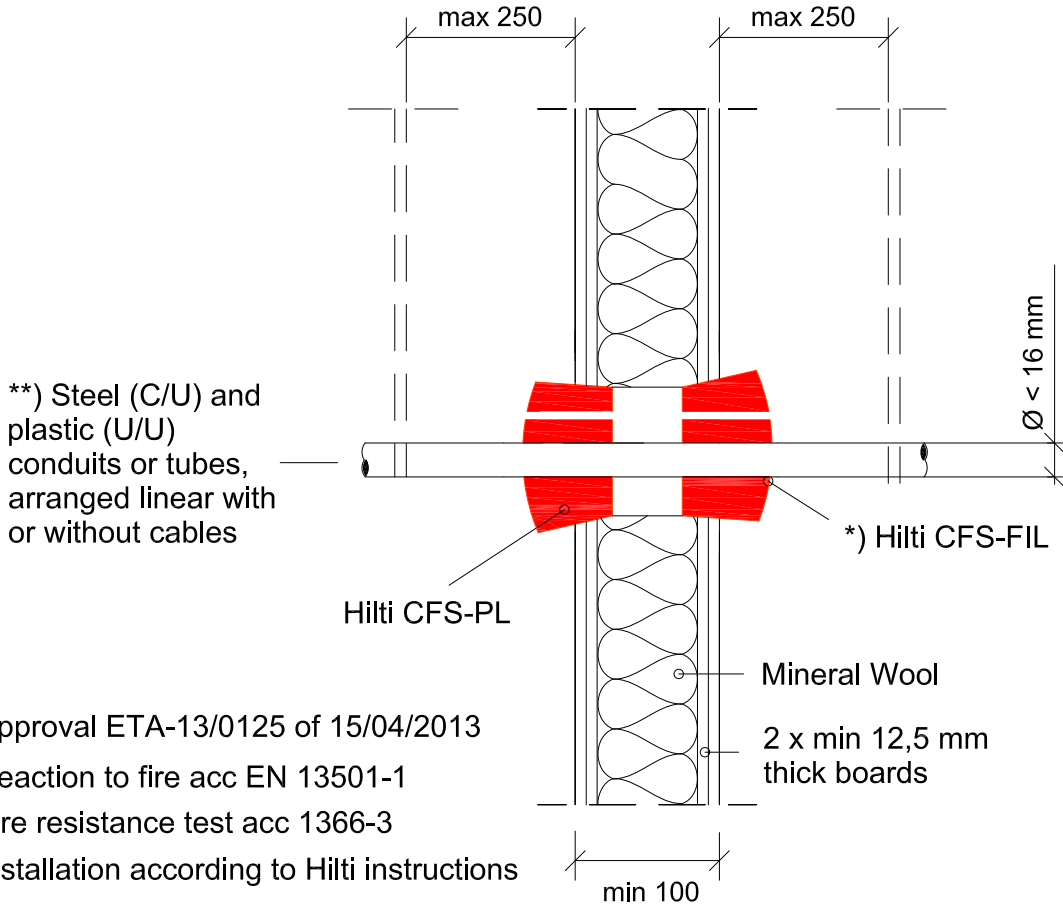
0060_01

REV 00

No scale

All units are in milimetres

Fire Rating EI 120



- Approval ETA-13/0125 of 15/04/2013
- Reaction to fire acc EN 13501-1
- Fire resistance test acc 1366-3
- Installation according to Hilti instructions

**) Ø Small plastic conduits and tubes

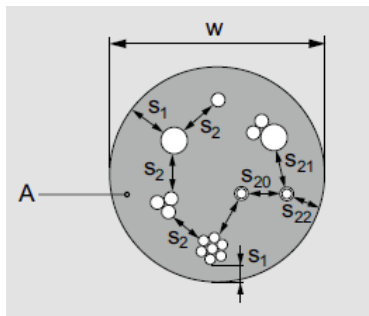
*) Annular gap fill material

Gaps between services and Hilti Firestop Plugs are filled with Hilti Firestop Filler, depth 20 mm

Opening Size: Ø 52-250 mm

	Diameter (mm)	Configuration
Flexible PO	16 ≤ Ø ≤ 40	With or without cable
Flexible PVC	16 ≤ Ø ≤ 32	With or without cable
Rigid PO/PVC	16 ≤ Ø ≤ 40	With or without cable

Distance Requirements



- s1 = 0 (dist. between cables and seal edge)
- s2 = 0 (dist. between cables)
- s20,21,22 = 0 (conduits Ø < 16 mm, dist between conduits to each other)
- s20 = 0 (conduits Ø > 16 mm, dist between conduits to each other)
- s21,22 = 20 (conduits Ø > 16 mm, dist between conduits and other services or seal edges)



CONTENTS

Single and cable bundles in a rigid wall

ID

CAB-RW-BD-0061

FIRESTOP PLUG

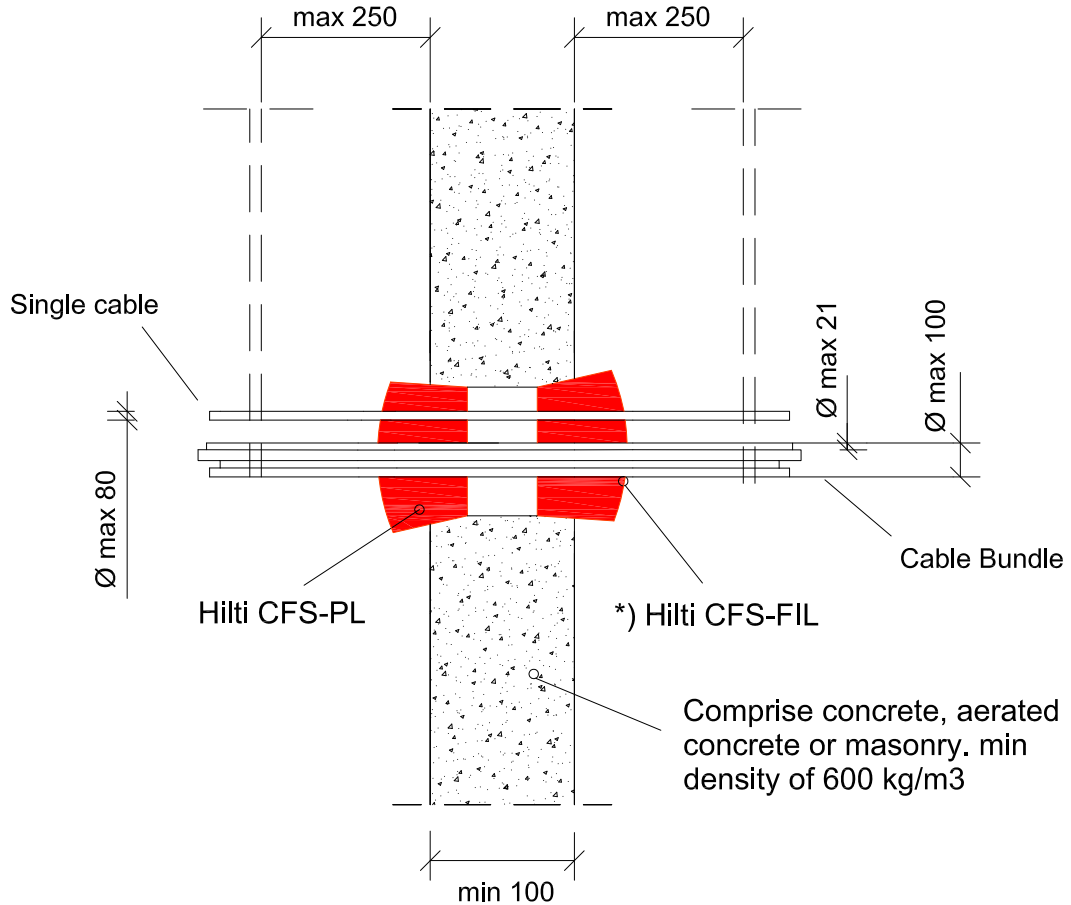
0061_01

REV 00

No scale

All units are in milimetres

Fire Rating EI 90



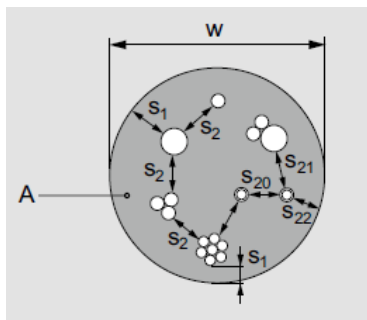
*) Annular gap fill material

Gaps between services and Hilti Firestop Plugs are filled with Hilti Firestop Filler, depth 20 mm

Opening Size: Ø 52-250 mm

- Approval ETA-13/0125 of 15/04/2013
- Reaction to fire acc EN 13501-1
- Fire resistance test acc 1366-3
- Installation according to Hilti instructions

Distance Requirements



- s1 = 0 (dist. between cables and seal edge)
- s2 = 0 (dist. between cables)
- s20,21,22 = 0 (conduits Ø < 16 mm, dist between conduits to each other)
- s20 = 0 (conduits Ø > 16 mm, dist between conduits to each other)
- s21,22 = 20 (conduits Ø > 16 mm, dist between conduits and other services or seal edges)



CONTENTS

Single and cable bundles in a rigid wall

ID

CAB-RW-BD-0062

FIRESTOP PLUG

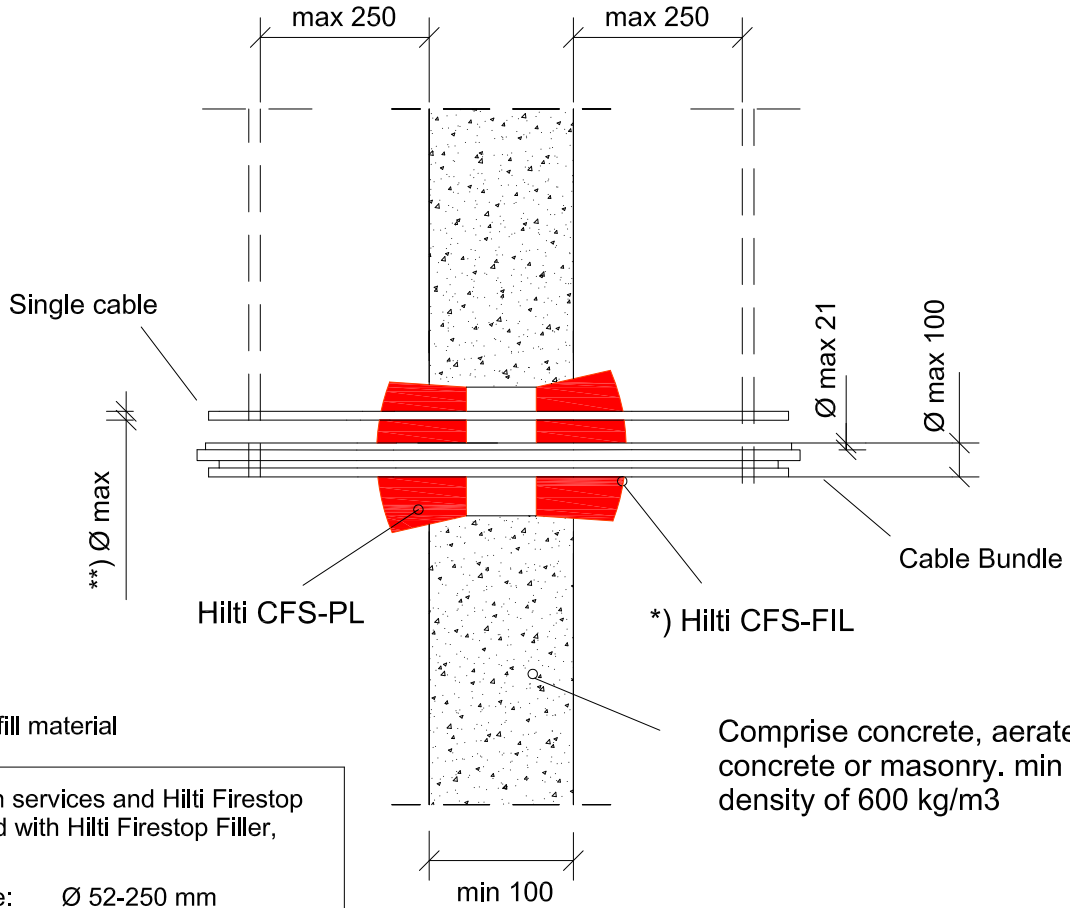
0062_01

REV
00

No scale

All units are in milimetres

Fire Rating EI 60



*) Annular gap fill material

Gaps between services and Hilti Firestop Plugs are filled with Hilti Firestop Filler, depth 20 mm
Opening Size: Ø 52-250 mm

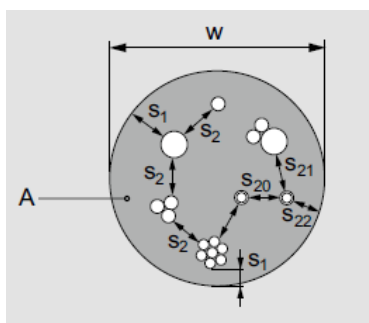
Comprise concrete, aerated concrete or masonry. min density of 600 kg/m³

- Approval ETA-13/0125 of 15/04/2013
- Reaction to fire acc EN 13501-1
- Fire resistance test acc 1366-3
- Installation according to Hilti instructions

**) Ø cables

Ø max single sheated cable	80
Ø max single non- sheated cable	24
Ø max cable bundle	100
Ø max for a cable in a cable bundle	21

Distance Requirements



- s1 = 0 (dist. between cables and seal edge)
- s2 = 0 (dist. between cables)
- s20,21,22 = 0 (conduits Ø < 16 mm, dist between conduits to each other)
- s20 = 0 (conduits Ø > 16 mm, dist between conduits to each other)
- s21,22 = 20 (conduits Ø > 16 mm, dist between conduits and other services or seal edges)



CONTENTS

Single and cable bundles in a rigid wall

ID

CAB-RW-BD-0063

FIRESTOP PLUG

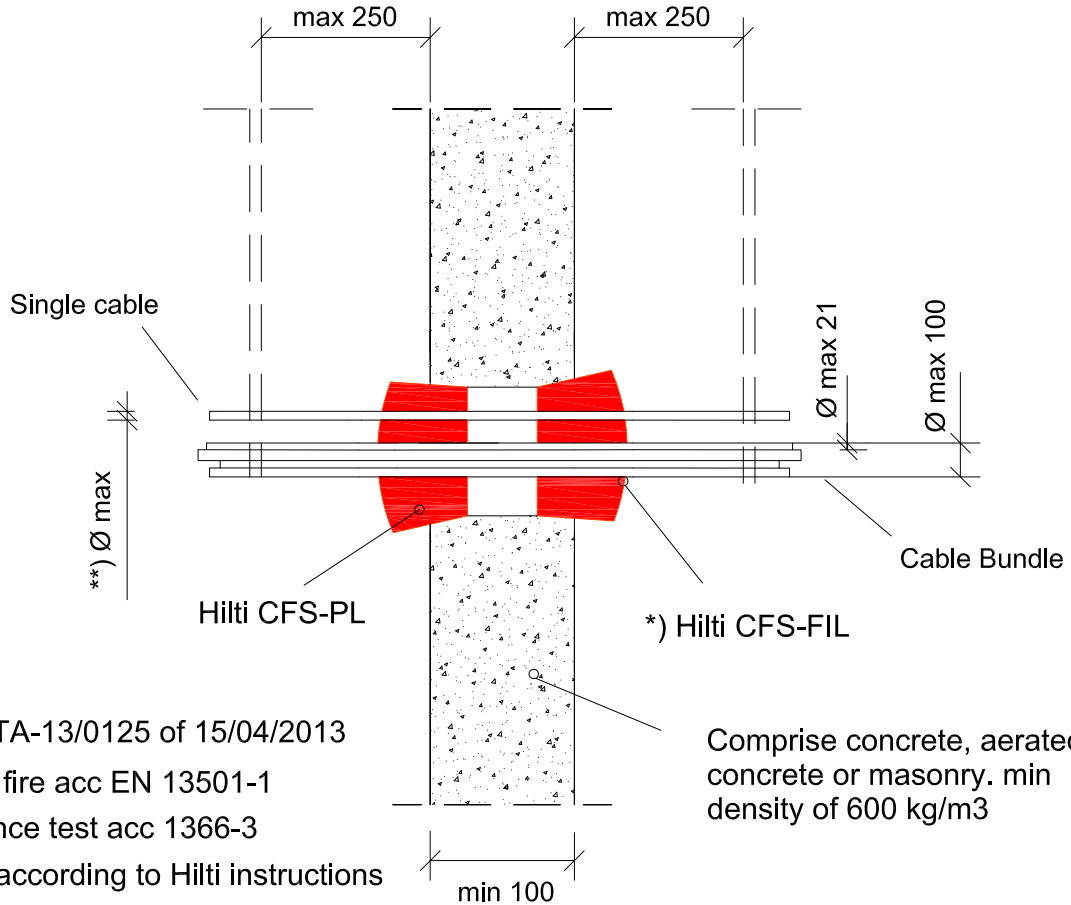
0063_01

REV
00

No scale

All units are in milimetres

Fire Rating EI 120



- Approval ETA-13/0125 of 15/04/2013
- Reaction to fire acc EN 13501-1
- Fire resistance test acc 1366-3
- Installation according to Hilti instructions

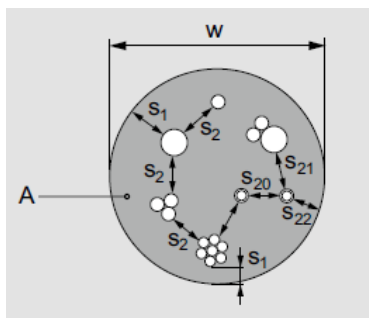
*) Annular gap fill material

Gaps between services and Hilti Firestop Plugs are filled with Hilti Firestop Filler, depth 20 mm
Opening Size: Ø 52-250 mm

**) Ø cables

	Filler	Filler+2putty a)
Ø max single sheathed cable	21	50
Ø max single non- sheathed cable	---	---
Ø max cable bundle	100	---
Ø max for a cable in a cable bundle	21	---

Distance Requirements



- s1 = 0 (dist. between cables and seal edge)
- s2 = 0 (dist. between cables)
- s20,21,22 = 0 (conduits Ø < 16 mm, dist between conduits to each other)
- s20 = 0 (conduits Ø > 16 mm, dist between conduits to each other)
- s21,22 = 20 (conduits Ø > 16 mm, dist between conduits and other services or seal edges)

a) Two layers of CFS-P BA are wrapped around the services or group of services.



CONTENTS

Steel and plastic conduits in a rigid wall

ID

CAB-RW-CD-0064

FIRESTOP PLUG

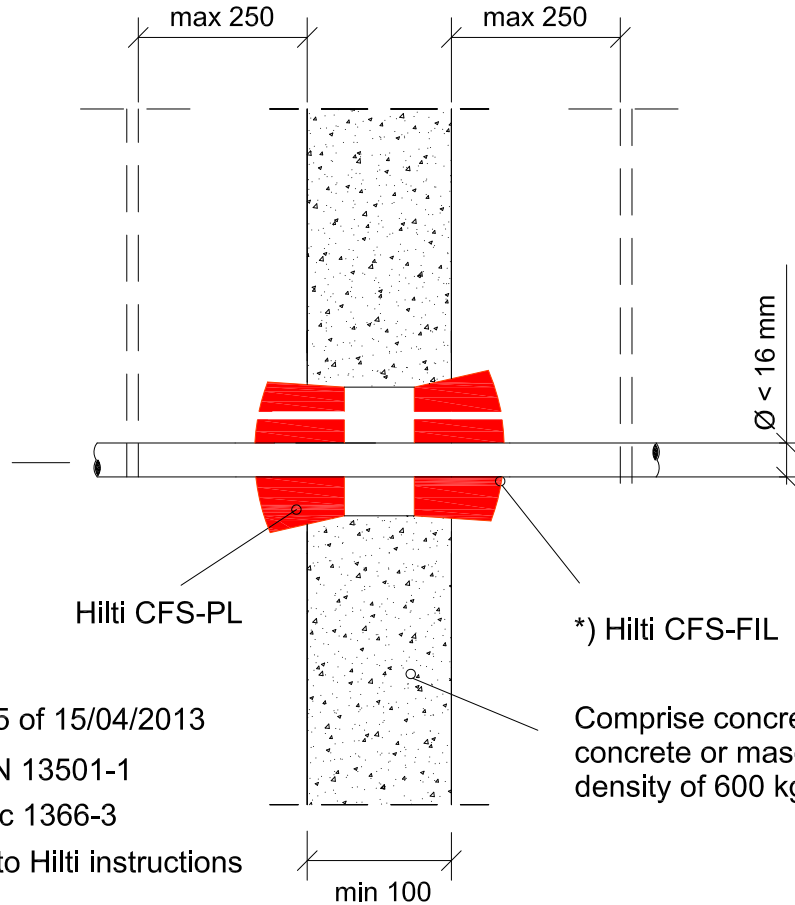
0064_01

REV
00

No scale

All units are in milimetres

Fire Rating EI 120



**) Steel (C/U) and plastic (U/U) conduits or tubes, arranged linear with or without cables

- Approval ETA-13/0125 of 15/04/2013
- Reaction to fire acc EN 13501-1
- Fire resistance test acc 1366-3
- Installation according to Hilti instructions

**) Ø Small plastic conduits and tubes

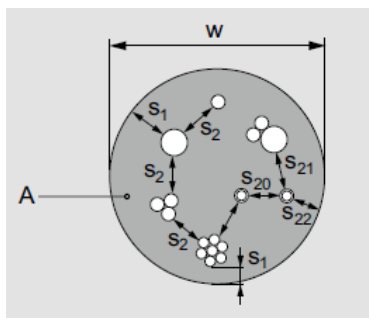
*) Annular gap fill material

Gaps between services and Hilti Firestop Plugs are filled with Hilti Firestop Filler, depth 20 mm

Opening Size: Ø 52-250 mm

	Diameter (mm)	Configuration
Flexible PO	16 ≤ Ø ≤ 40	With or without cable
Flexible PVC	16 ≤ Ø ≤ 32	With or without cable
Rigid PO/PVC	16 ≤ Ø ≤ 40	With or without cable

Distance Requirements



- s1 = 0 (dist. between cables and seal edge)
- s2 = 0 (dist. between cables)
- s20,21,22 = 0 (conduits Ø < 16 mm, dist between conduits to each other)
- s20 = 0 (conduits Ø > 16 mm, dist between conduits to each other)
- s21,22 = 20 (conduits Ø > 16 mm, dist between conduits and other services or seal edges)



CONTENTS

Single and cable bundles in a rigid floor

ID

CAB-RF-BD-0065

FIRESTOP PLUG

0065_01

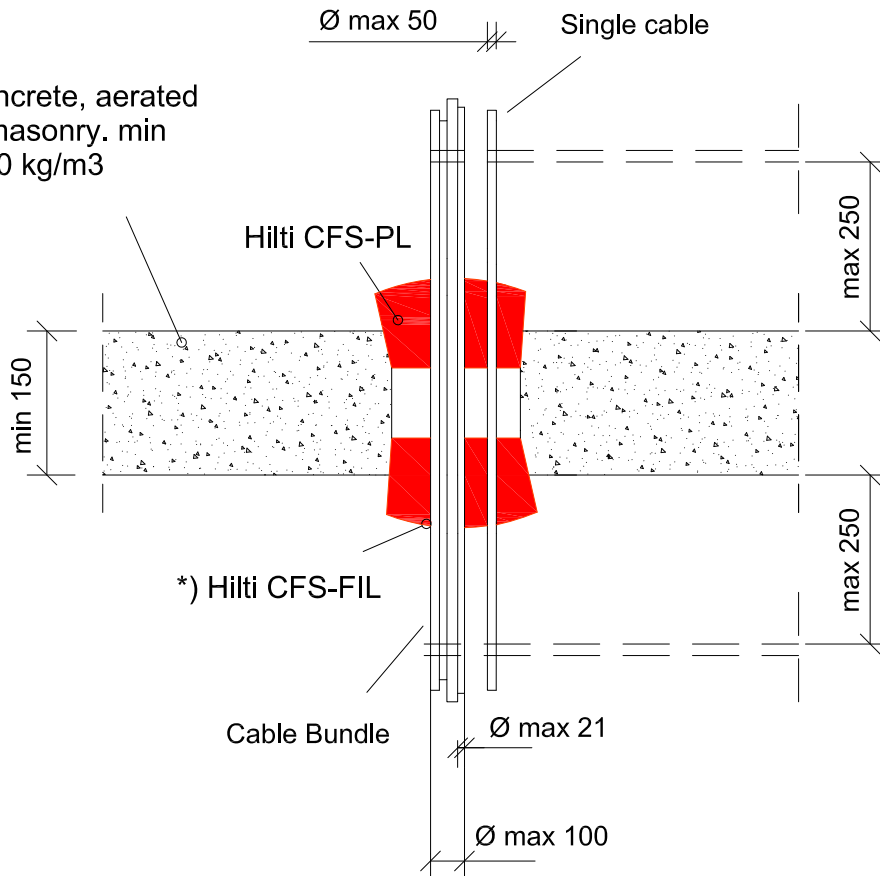
REV 00

No scale

All units are in millimetres

Fire Rating EI 120

Comprise concrete, aerated concrete or masonry. min density of 600 kg/m³



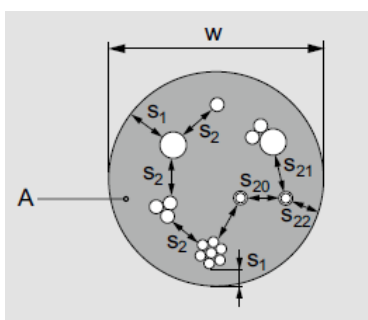
*) Annular gap fill material

Gaps between services and Hilti Firestop Plugs are filled with Hilti Firestop Filler, depth 20 mm

Opening Size: Ø 52-250 mm

- Approval ETA-13/0125 of 15/04/2013
- Reaction to fire acc EN 13501-1
- Fire resistance test acc 1366-3
- Installation according to Hilti instructions

Distance Requirements



- s1 = 0 (dist. between cables and seal edge)
- s2 = 0 (dist. between cables)
- s20,21,22 = 0 (conduits Ø < 16 mm, dist between conduits to each other)
- s20 = 0 (conduits Ø > 16 mm, dist between conduits to each other)
- s21,22 = 20 (conduits Ø > 16 mm, dist between conduits and other services or seal edges)



CONTENTS

Single and cable bundles in a rigid floor

ID

CAB-RF-BD-0067

FIRESTOP PLUG

0067_01

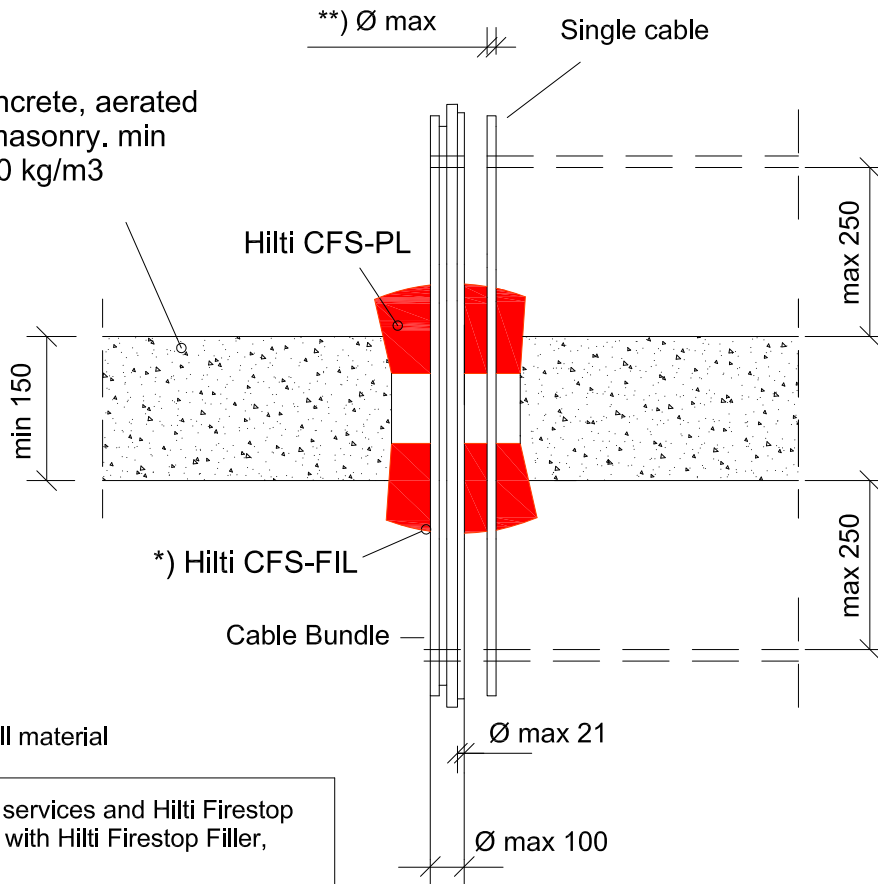
REV 00

No scale

All units are in millimetres

Fire Rating EI 30

Comprise concrete, aerated concrete or masonry. min density of 600 kg/m³



*) Annular gap fill material

Gaps between services and Hilti Firestop Plugs are filled with Hilti Firestop Filler, depth 20 mm

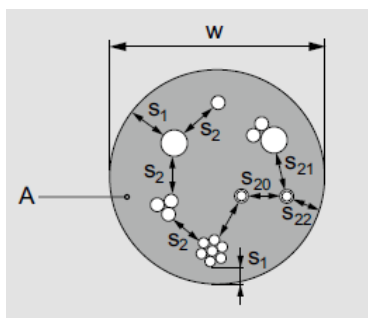
Opening Size: Ø 52-250 mm

- Approval ETA-13/0125 of 15/04/2013
- Reaction to fire acc EN 13501-1
- Fire resistance test acc 1366-3
- Installation according to Hilti instructions

**) Ø cables

Ø max single sheated cable	80
Ø max single non- sheated cable	24
Ø max cable bundle	100
Ø max for a cable in a cable bundle	21

Distance Requirements



- s1 = 0 (dist. between cables and seal edge)
- s2 = 0 (dist. between cables)
- s20,21,22 = 0 (conduits Ø < 16 mm, dist between conduits to each other)
- s20 = 0 (conduits Ø > 16 mm, dist between conduits to each other)
- s21,22 = 20 (conduits Ø > 16 mm, dist between conduits and other services or seal edges)



CONTENTS

Steel and plastic conduits in a rigid floor

ID

CAB-RF-CD-0068

FIRESTOP PLUG

0068_01

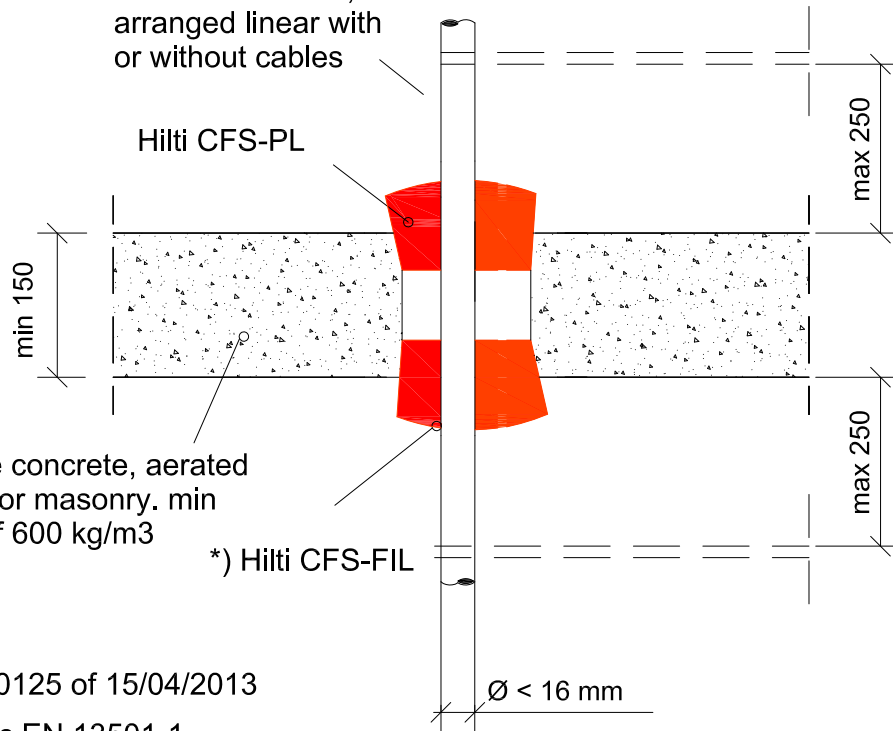
REV
00

No scale

All units are in milimetres

Fire Rating EI 120

**) Steel (C/U) and plastic (U/U) conduits or tubes, arranged linear with or without cables



Comprise concrete, aerated concrete or masonry. min density of 600 kg/m³

*) Hilti CFS-FIL

- Approval ETA-13/0125 of 15/04/2013
- Reaction to fire acc EN 13501-1
- Fire resistance test acc 1366-3
- Installation according to Hilti instructions

**) Ø Small plastic conduits and tubes

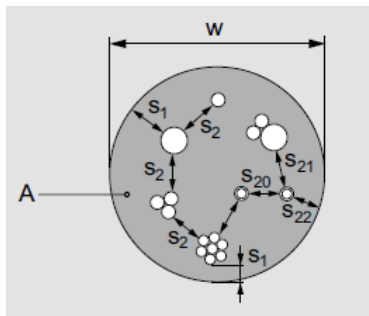
*) Annular gap fill material

Gaps between services and Hilti Firestop Plugs are filled with Hilti Firestop Filler, depth 20 mm

Opening Size: Ø 52-250 mm

	Diameter (mm)	Configuration
Flexible PO	16 ≤ Ø ≤ 40	With or without cable
Flexible PVC	16 ≤ Ø ≤ 32	With or without cable
Rigid PO/PVC	16 ≤ Ø ≤ 40	With or without cable

Distance Requirements



- s1 = 0 (dist. between cables and seal edge)
- s2 = 0 (dist. between cables)
- s20,21,22 = 0 (conduits Ø < 16 mm, dist between conduits to each other)
- s20 = 0 (conduits Ø > 16 mm, dist between conduits to each other)
- s21,22 = 20 (conduits Ø > 16 mm, dist between conduits and other services or seal edges)