

# Schémas d'applications pour le collier en rouleau CFS-C EL



## Applications pour eaux usées en contre-cloison épaisseur 50 mm et cloison épaisseur 100 mm

- |  |                       |
|--|-----------------------|
| • Tube plastique PE droit en cloison épaisseur 100 mm  | WW-FW-PP-0001         |
| • Tube plastique PP droit en cloison épaisseur 100 mm  | WW-FW-PP-0016/17      |
| • Tube plastique PVC droit en cloison épaisseur 100 mm   | WW-FW-PP-0026         |
| • Tube plastique PE incliné en cloison épaisseur 100 mm  | WW-FW-PP-0118         |
| • Tube plastique PP incliné en cloison épaisseur 100 mm  | WW-FW-PP-0121         |
| • Tube plastique PVC incliné en cloison épaisseur 100 mm   | WW-FW-PP-0122         |
| • Tube plastique PE (sans distance avec autres systèmes, conlit ou CFS-B) en cloison épaisseur 100 mm              | WW-FW-PP-0187         |
| • Tube plastique PP (sans distance avec autres systèmes, conlit ou CFS-B) en cloison épaisseur 100 mm              | WW-FW-PP-0190         |
| • Tube plastique PVC (sans distance avec autres systèmes, conlit ou CFS-B) en cloison épaisseur 100 mm             | WW-FW-PP-0191         |
| • Tube plastique ABS et SAN+PVC droit en contre cloison épaisseur 50 mm  | WW-SW-PP-0216/219/228 |
| • Tube plastique PE/PP/PVC incliné en contre cloison épaisseur 50 mm   | WW-SW-PP-0217/220/229 |
| • Tube plastique PE/PP/PVC (sans distance avec autres systèmes, conlit ou CFS-B) en contre cloison épaisseur 50 mm | WW-SW-PP-0218/221/230 |

\*) Tous les schémas sont également disponibles sur demande en format DWG pour faciliter l'insertion sur des plans.



CONTENTS

Straight plastic pipe in a flexible wall

ID

WW-FW-PP-0001

FIRESTOP COLLAR ENDLESS

0001\_01

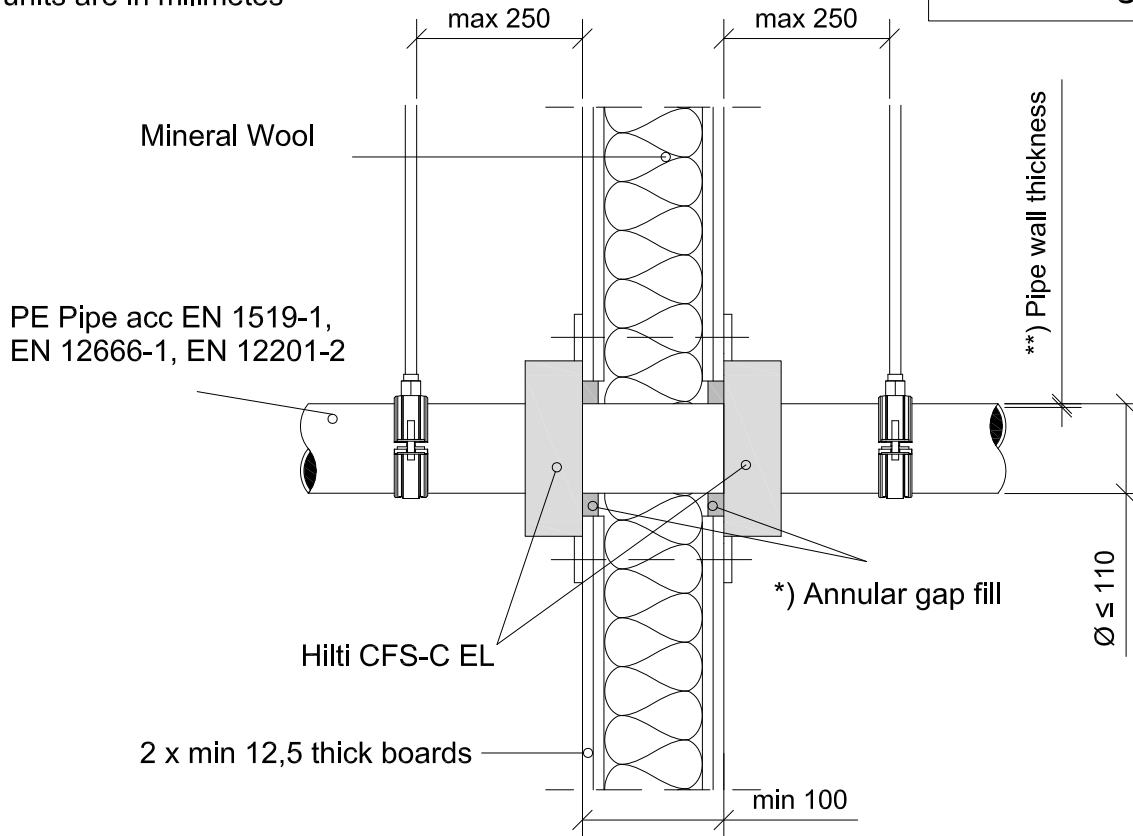
REV

00

No scale

All units are in millimetres

Fire Rating EI 120 U/U



\*) Annular gap fill material

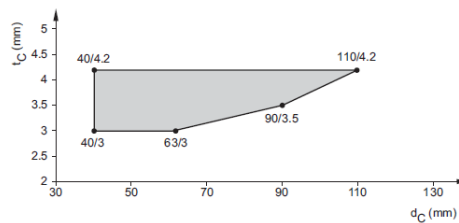
Gypsum based mortar	Joint filler has to be installed from both sides with depth >25 mm. A gap width 0-15 mm, backfilling is not requested
Hilti Firestop Acrylic Sealant CFS-S ACR	

- Approval ETA-14/0085 of 23/04/2014
- Reaction to fire acc EN 13501-1
- Fire resistance test acc 1366-3
- Installation according to Hilti instructions

Sound Insulation for flexible wall

$D_{n,w}$	= 60 dB
$R_w$	= 53 dB

\*\*) The pipe wall thickness approved can be found in this graphic





CONTENTS

Straight plastic pipe in a flexible wall

ID

WW-FW-PP-0016

FIRESTOP COLLAR ENDLESS

0016\_01

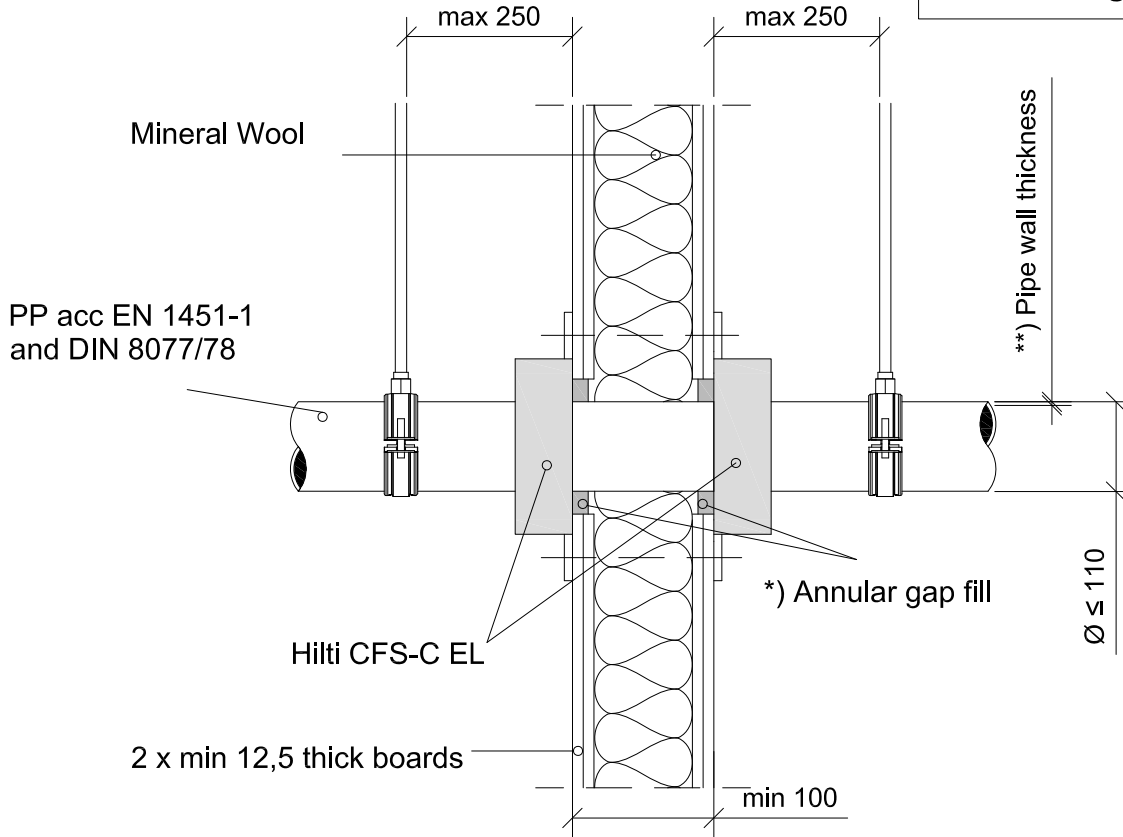
REV

00

No scale

All units are in millimetres

Fire Rating EI 120 U/U



\*) Annular gap fill material

Gypsum based mortar	Joint filler has to be installed from both sides with depth >25 mm. A gap width 0-15 mm, backfilling is not requested
Hilti Firestop Acrylic Sealant CFS-S ACR	

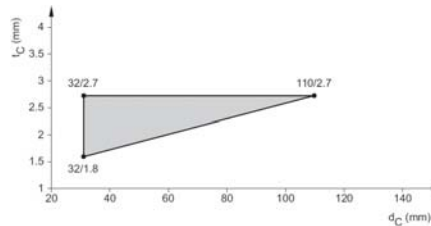
- Approval ETA-14/0085 of 23/04/2014
- Reaction to fire acc EN 13501-1
- Fire resistance test acc 1366-3
- Installation according to Hilti instructions

Sound Insulation for flexible wall

\*\*) The pipe wall thickness approved can be found in this graphic

$D_{n,w} = 60 \text{ dB}$

$R_w = 53 \text{ dB}$





CONTENTS

Straight plastic pipe in a flexible wall

ID

WW-FW-PP-0017

FIRESTOP COLLAR ENDLESS

0017\_01

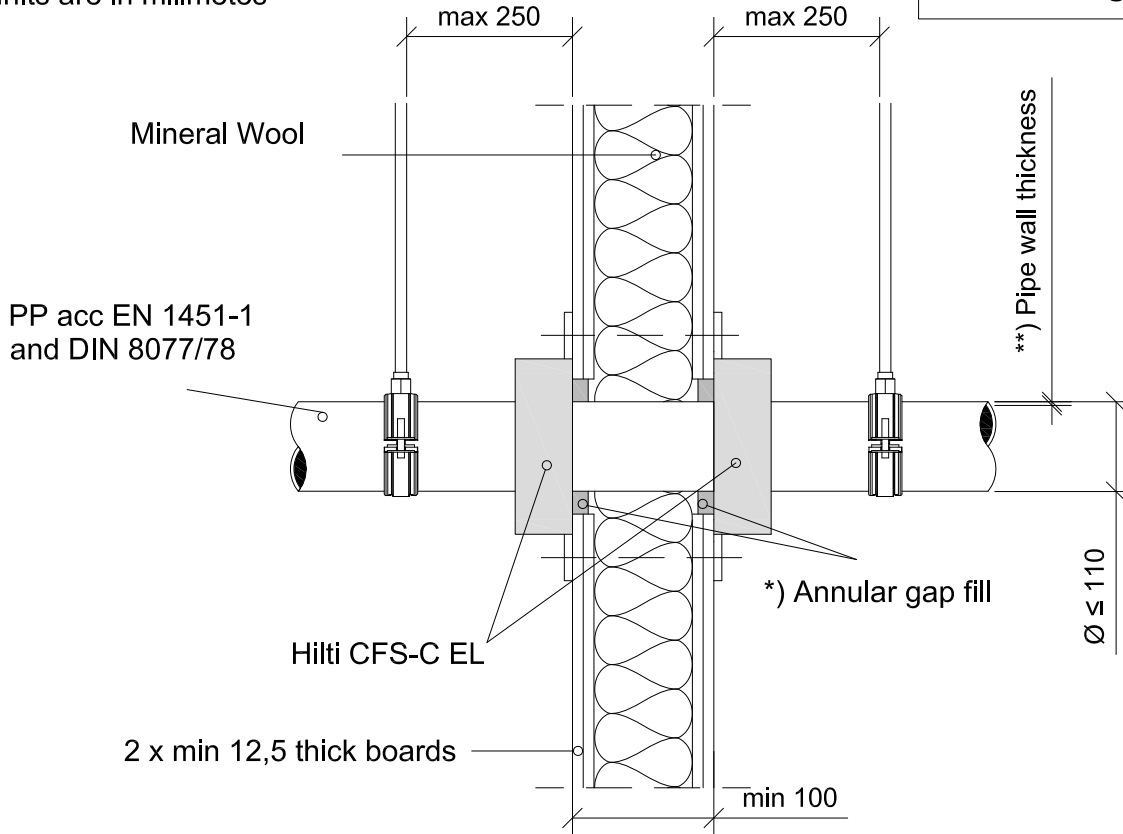
REV

00

No scale

All units are in millimetres

Fire Rating EI 120 U/C



\*) Annular gap fill material

Gypsum based mortar	Joint filler has to be installed from both sides with depth >25 mm. A gap width 0-15 mm, backfilling is not requested
Hilti Firestop Acrylic Sealant CFS-S ACR	

- Approval ETA-14/0085 of 23/04/2014

- Reaction to fire acc EN 13501-1

- Fire resistance test acc 1366-3

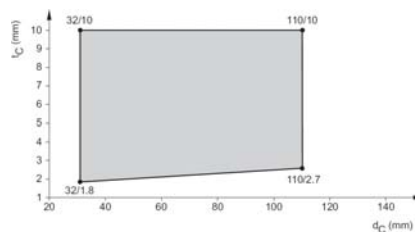
- Installation according to Hilti instructions

Sound Insulation for flexible wall

$D_{n,w} = 60 \text{ dB}$

$R_w = 53 \text{ dB}$

\*\*) The pipe wall thickness approved can be found in this graphic





CONTENTS

Straight plastic pipe in a flexible wall

ID

WW-FW-PP-0026

FIRESTOP COLLAR ENDLESS

0026\_01

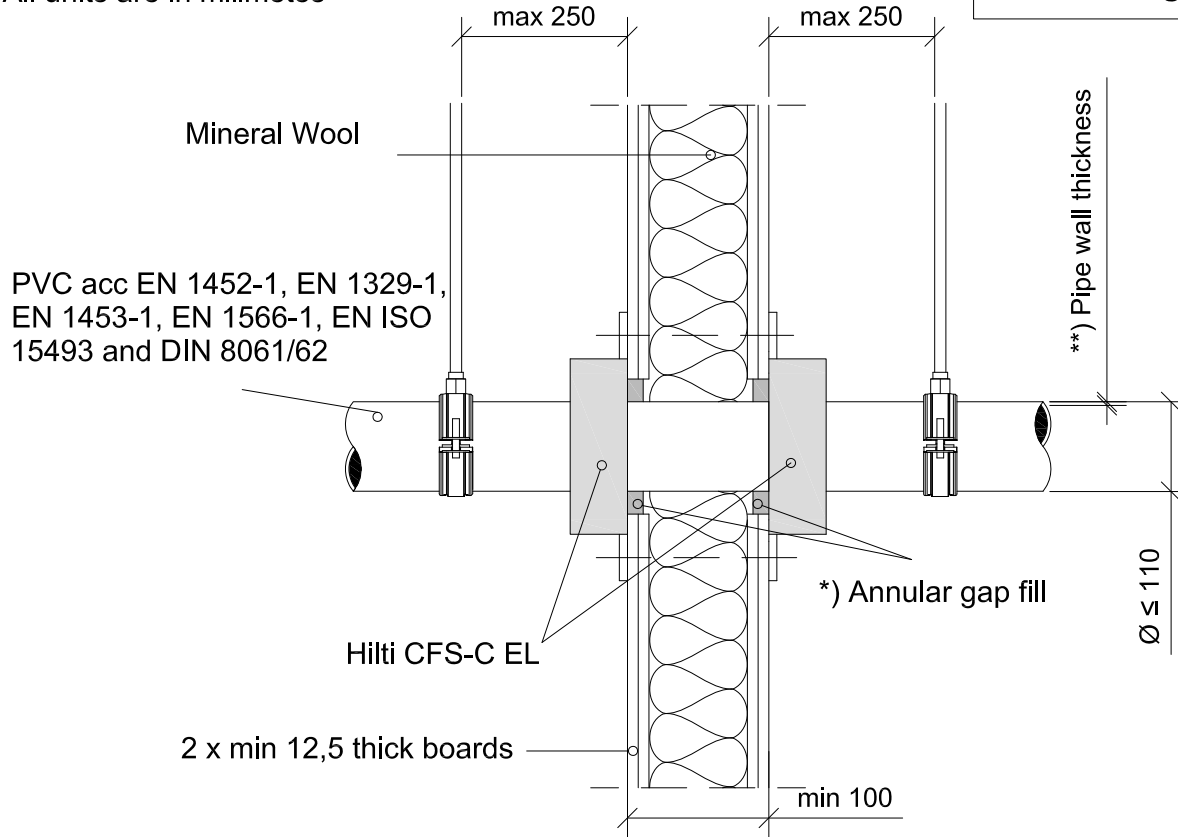
REV

00

No scale

All units are in millimetres

Fire Rating EI 120 U/U



\*) Annular gap fill material

Gypsum based mortar	Joint filler has to be installed from both sides with depth >25 mm. A gap width 0-15 mm, backfilling is not requested
Hilti Firestop Acrylic Sealant CFS-S ACR	

- Approval ETA-14/0085 of 23/04/2014

- Reaction to fire acc EN 13501-1

- Fire resistance test acc 1366-3

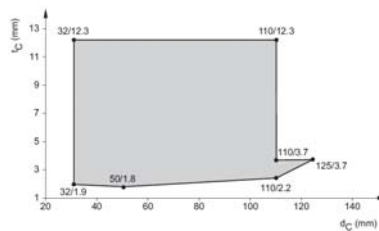
- Installation according to Hilti instructions

Sound Insulation for flexible wall

$D_{n,w} = 60 \text{ dB}$

$R_w = 53 \text{ dB}$

\*\*) The pipe wall thickness approved can be found in this graphic





CONTENTS

Inclined plastic pipe in a flexible wall

ID

WW-FW-PP-0118

FIRESTOP COLLAR ENDLESS

0118\_01

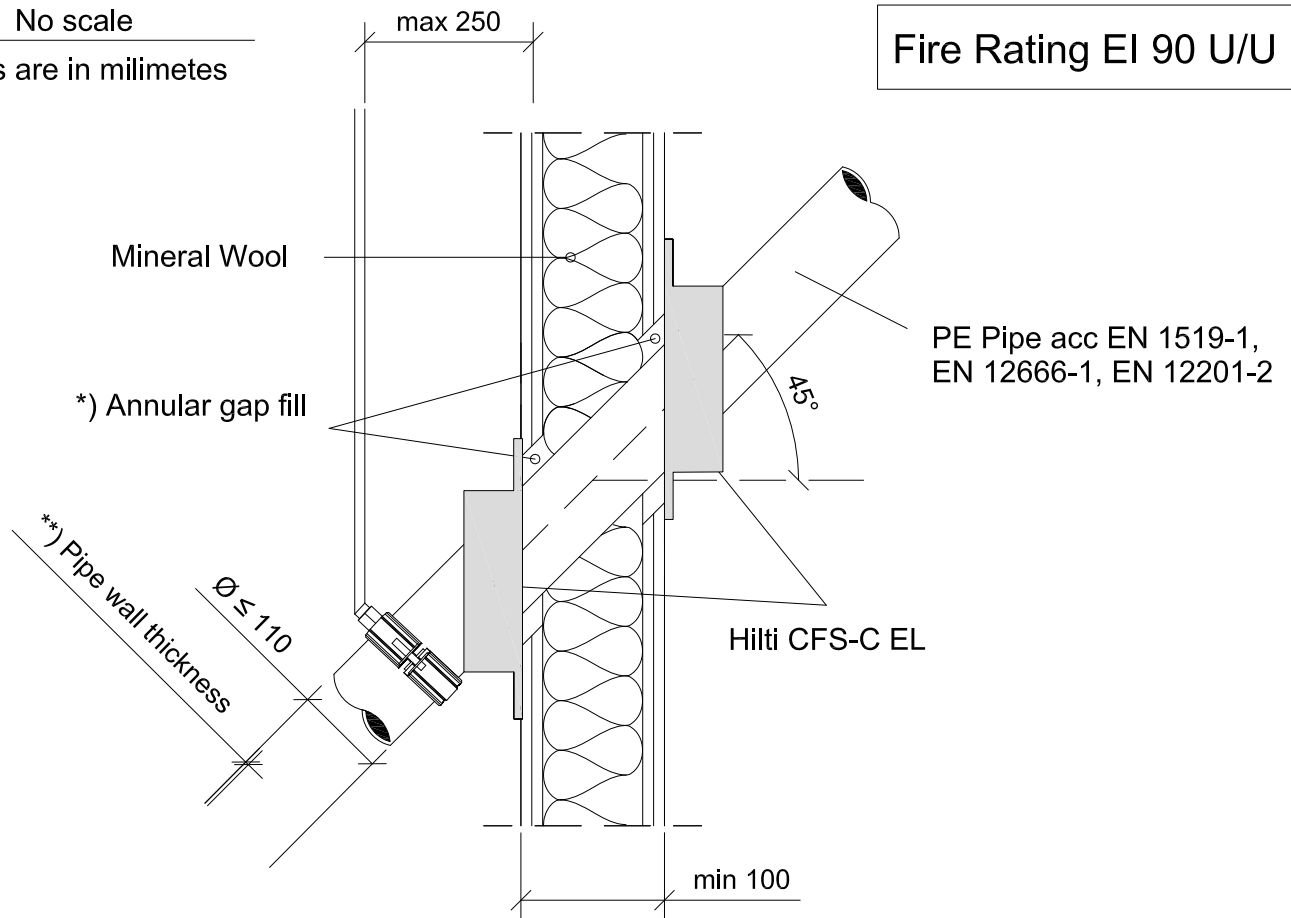
REV

00

No scale

All units are in millimetres

Fire Rating EI 90 U/U



\*) Annular gap fill material

Gypsum based mortar	Joint filler has to be installed from both sides with depth >25 mm. A gap width 0-15 mm, backfilling is not requested
Hilti Firestop Acrylic Sealant CFS-S ACR	

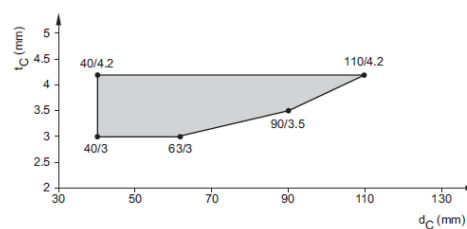
- Approval ETA-14/0085 of 23/04/2014
- Reaction to fire acc EN 13501-1
- Fire resistance test acc 1366-3
- Installation according to Hilti instructions

Sound Insulation for flexible wall

$$D_{n,w} = 60 \text{ dB}$$

$$R_w = 53 \text{ dB}$$

\*\*) The pipe wall thickness approved can be found in this graphic





CONTENTS

Inclined plastic pipe in a flexible wall

ID

WW-FW-PP-0121

FIRESTOP COLLAR ENDLESS

0121\_01

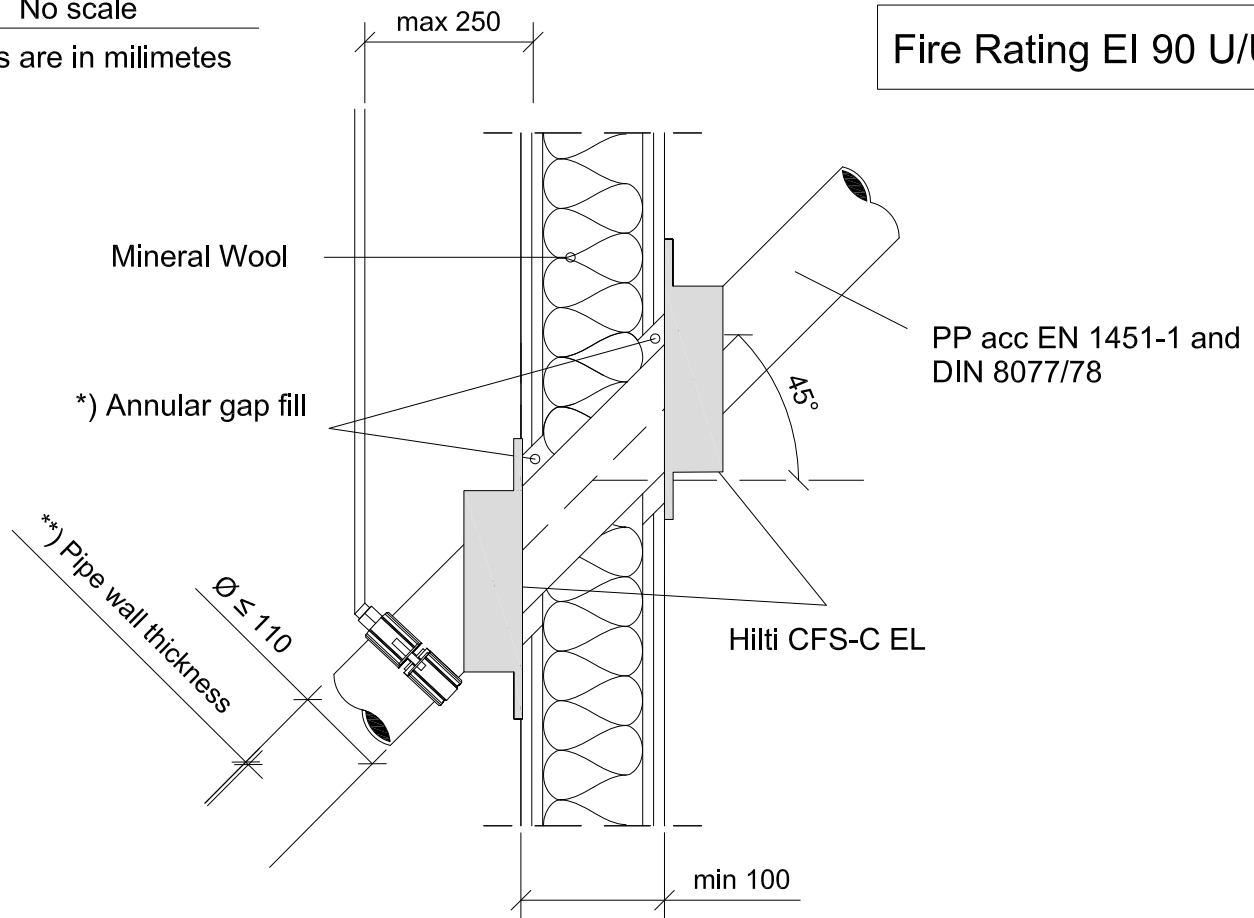
REV

00

No scale

All units are in milimetres

Fire Rating EI 90 U/U



\*) Annular gap fill material

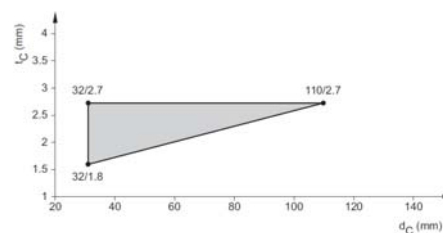
Gypsum based mortar	Joint filler has to be installed from both sides with depth >25 mm. A gap width 0-15 mm, backfilling is not requested
Hilti Firestop Acrylic Sealant CFS-S ACR	

- Approval ETA-14/0085 of 23/04/2014
- Reaction to fire acc EN 13501-1
- Fire resistance test acc 1366-3
- Installation according to Hilti instructions

Sound Insulation for flexible wall

$D_{n,w}$	= 60 dB
$R_w$	= 53 dB

\*\*) The pipe wall thickness approved can be found in this graphic





CONTENTS

Inclined plastic pipe in a flexible wall

ID

WW-FW-PP-0122

FIRESTOP COLLAR ENDLESS

0122\_01

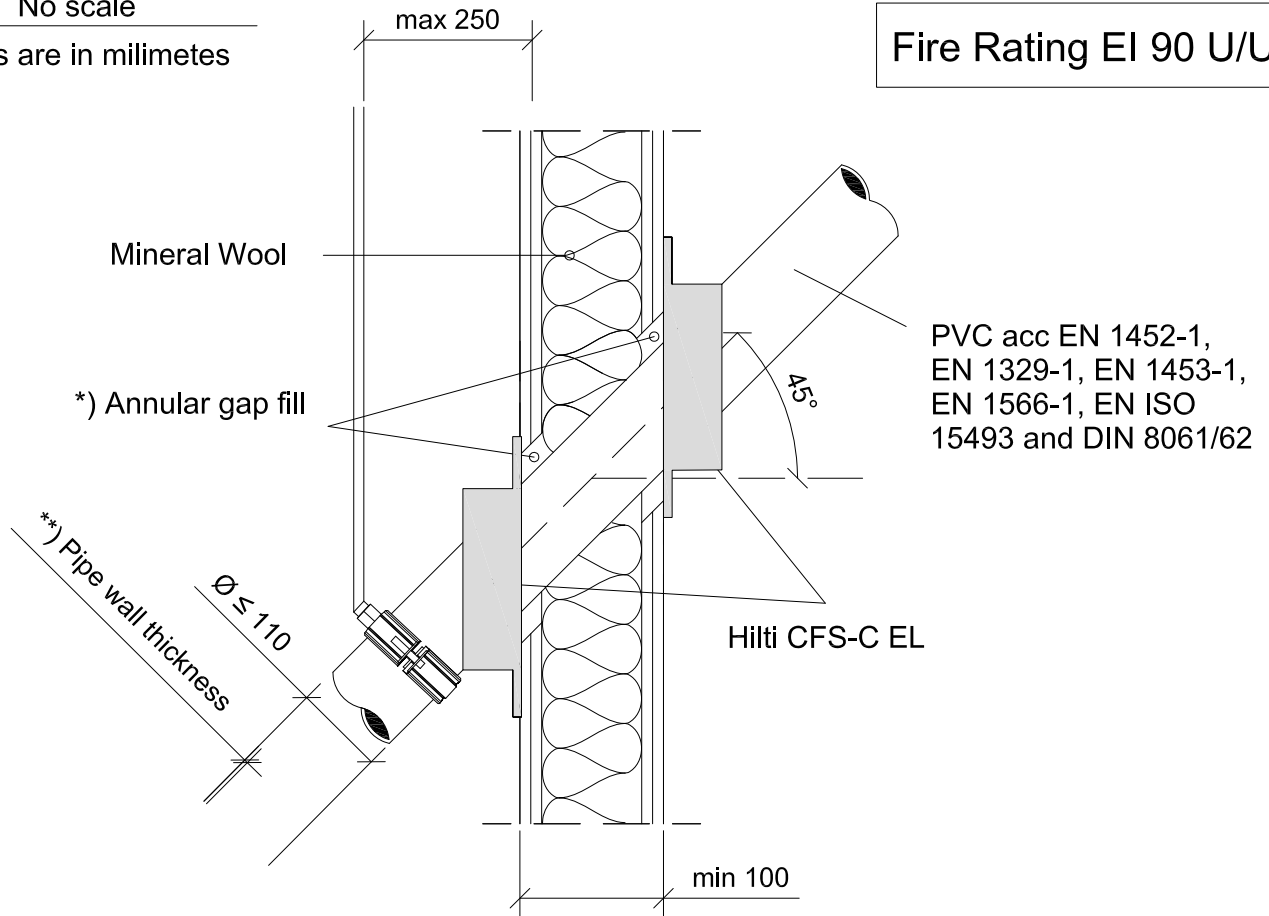
REV

00

No scale

All units are in milimetres

Fire Rating EI 90 U/U



\* ) Annular gap fill material

Gypsum based mortar	Joint filler has to be installed from both sides with depth >25 mm. A gap width 0-15 mm, backfilling is not requested
Hilti Firestop Acrylic Sealant CFS-S ACR	

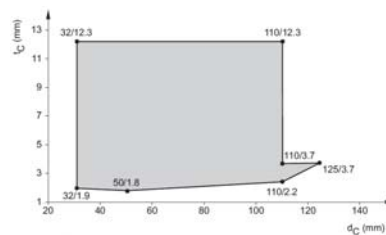
- Approval ETA-14/0085 of 23/04/2014
- Reaction to fire acc EN 13501-1
- Fire resistance test acc 1366-3
- Installation according to Hilti instructions

Sound Insulation for flexible wall

$$D_{n,w} = 60 \text{ dB}$$

$$R_w = 53 \text{ dB}$$

\*\* ) The pipe wall thickness approved can be found in this graphic







CONTENTS

Zero distance to other system,  
Conlit or CFS-B

ID

WW-FW-PP-0187

FIRESTOP COLLAR ENDLESS

0187\_01

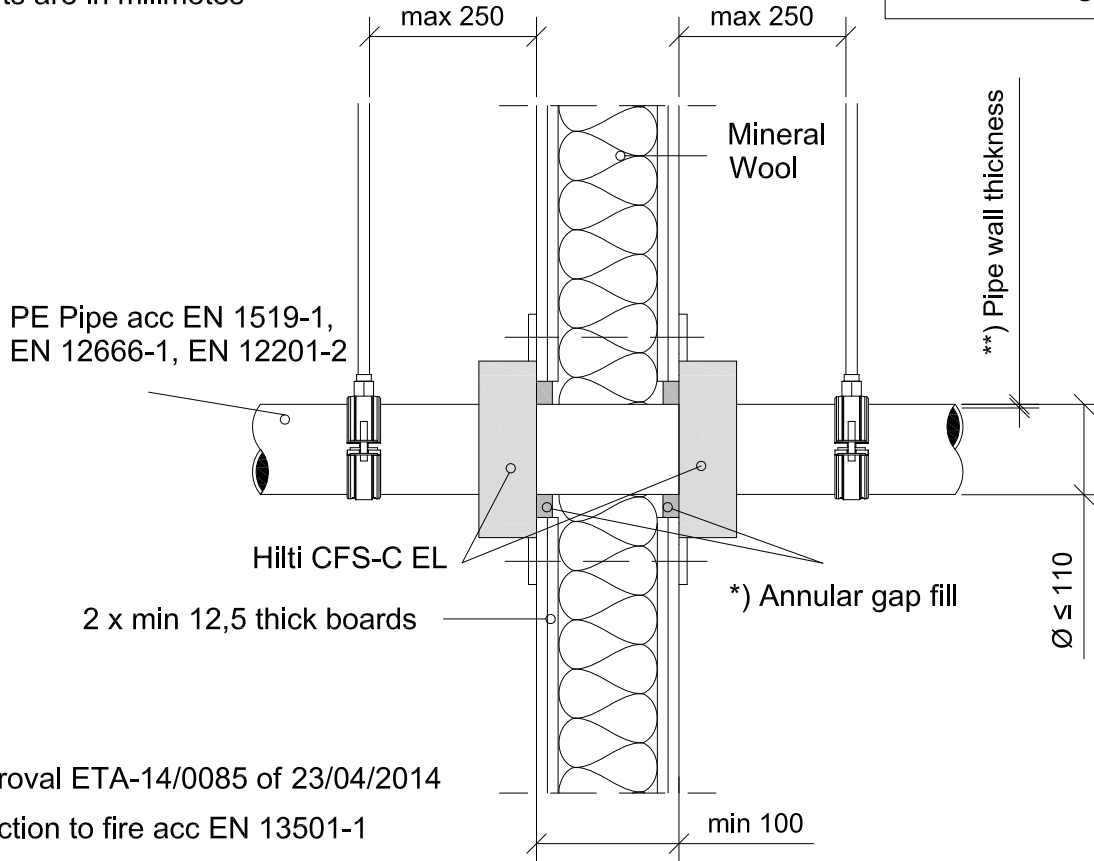
REV

00

No scale

All units are in millimetres

Fire Rating EI 90 U/U



- Approval ETA-14/0085 of 23/04/2014
- Reaction to fire acc EN 13501-1
- Fire resistance test acc 1366-3
- Installation according to Hilti instructions

Approved pipes and insulation to be used with Conlit 150, Rockwool 800 and CFS-B

\*) Annular gap fill material

Gypsum based mortar	Joint filler has to be installed from both sides with depth >25 mm. A gap width 0-15 mm, backfilling is not requested
Hilti Firestop Acrylic Sealant CFS-S ACR	

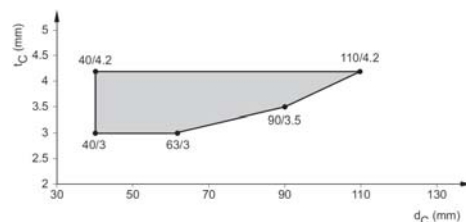
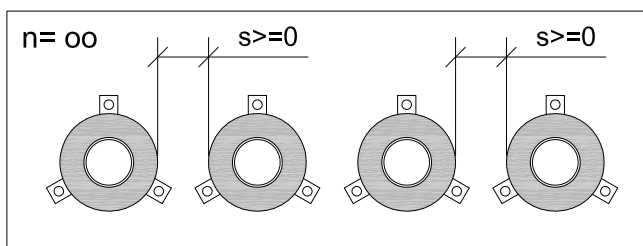
Sound Insulation for flexible wall

$$D_{n,w} = 60 \text{ dB}$$

$$R_w = 53 \text{ dB}$$

Pipes types	Copper, unalloyed steel, alloyed steel, cast iron, stainless steel
Pipe outside diameter	dm < 42 mm
Pipe thickness	1.2 mm < tm < 14.2 mm
Elastomeric foamed thermal insulation	CS with minimum length (ld>250mm) on both sides of the wall.
Elastomeric foamed thermal insulation thickness	9 mm < De < 35 mm
Incombustible thermal insulation, based on mineral wool (combustibility class A1 or A2 in acc EN 13501	- Conlit 150 inside the wall/floor only with Insulation thickness (td>19 mm) - Rockwool 800, covering the metal pipe outside the wall/floor with Insulation thickness td> 20 mm

\*\*) The pipe wall thickness approved can be found in this graphic





CONTENTS

Zero distance to other system,  
Conlit or CFS-B

ID

WW-FW-PP-0190

FIRESTOP COLLAR ENDLESS

0190\_01

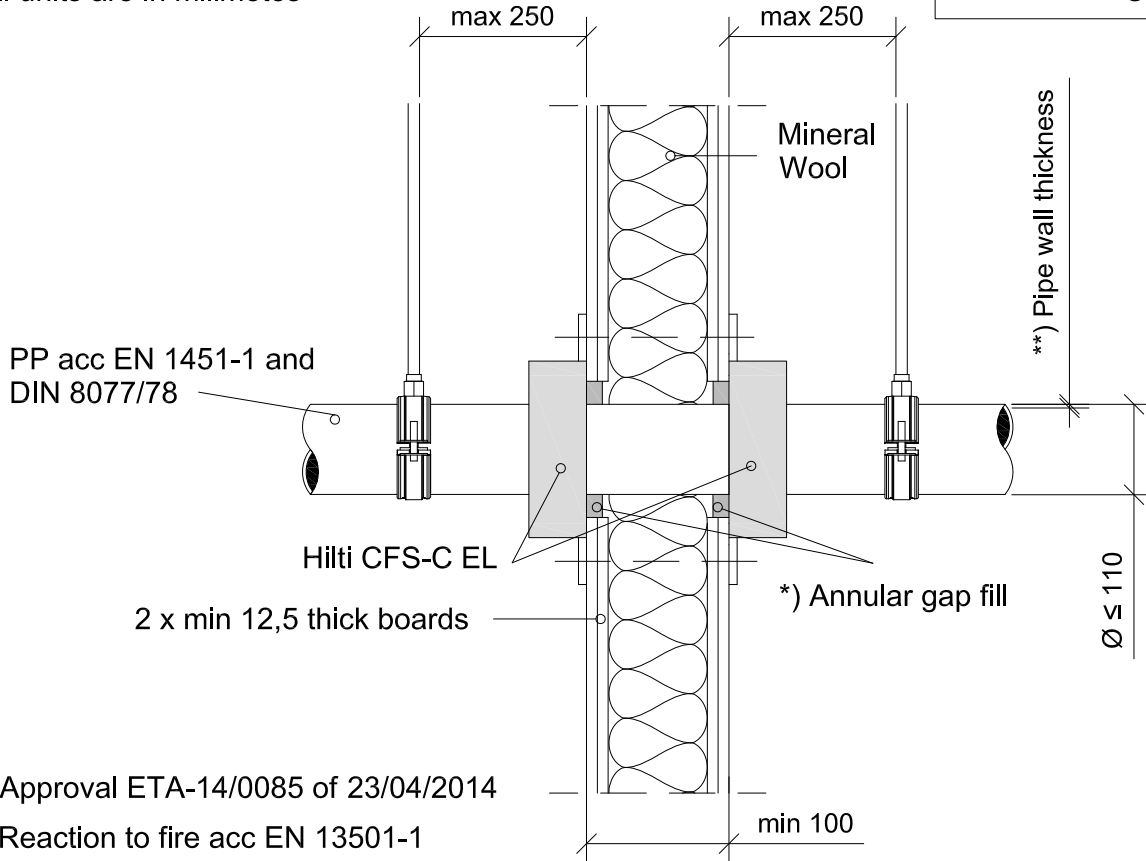
REV

00

No scale

All units are in millimetres

Fire Rating EI 90 U/U



- Approval ETA-14/0085 of 23/04/2014
- Reaction to fire acc EN 13501-1
- Fire resistance test acc 1366-3
- Installation according to Hilti instructions

Approved pipes and insulation to be used with Conlit 150, Rockwool 800 and CFS-B

\*) Annular gap fill material

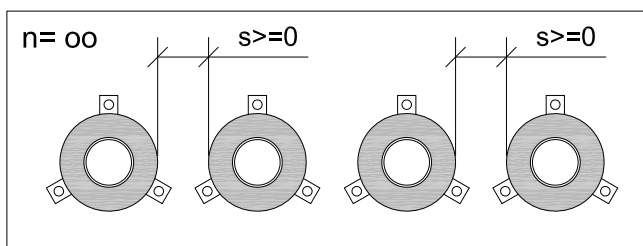
Gypsum based mortar	Joint filler has to be installed from both sides with depth >25 mm. A gap width 0-15 mm, backfilling is not requested
Hilti Firestop Acrylic Sealant CFS-S ACR	

Sound Insulation for flexible wall

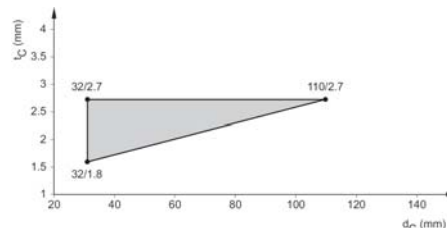
$$D_{n,w} = 60 \text{ dB}$$

$$R_w = 53 \text{ dB}$$

Pipes types	Copper, unalloyed steel, alloyed steel, cast iron, stainless steel
Pipe outside diameter	dm < 42 mm
Pipe thickness	1.2 mm < tm < 14.2 mm
Elastomeric foamed thermal insulation	CS with minimum length (ld>250mm) on both sides of the wall.
Elastomeric foamed thermal insulation thickness	9 mm < De < 35 mm
Incombustible thermal insulation, based on mineral wool (combustibility class A1 or A2 in acc EN 13501	- Conlit 150 inside the wall/floor only with Insulation thickness (td>19 mm) - Rockwool 800, covering the metal pipe outside the wall/floor with Insulation thickness td> 20 mm



\*\*) The pipe wall thickness approved can be found in this graphic





CONTENTS

Zero distance to other system,  
Conlit or CFS-B

ID

WW-FW-PP-0191

FIRESTOP COLLAR ENDLESS

0191\_01

REV

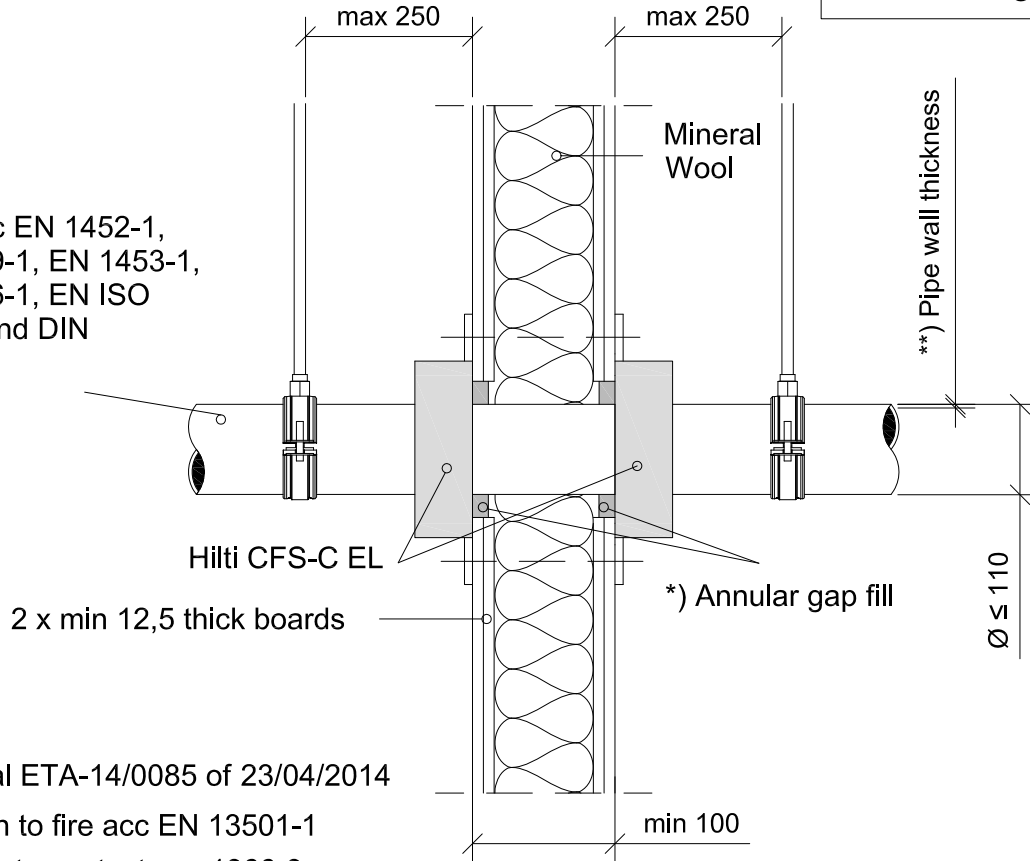
00

No scale

All units are in millimetres

Fire Rating EI 90 U/U

PVC acc EN 1452-1,  
EN 1329-1, EN 1453-1,  
EN 1566-1, EN ISO  
15493 and DIN  
8061/62



- Approval ETA-14/0085 of 23/04/2014
- Reaction to fire acc EN 13501-1
- Fire resistance test acc 1366-3
- Installation according to Hilti instructions

Approved pipes and insulation to be used with Conlit 150, Rockwool 800 and CFS-B

\*) Annular gap fill material

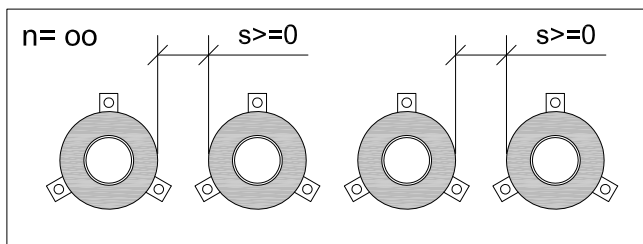
Gypsum based mortar	Joint filler has to be installed from both sides with depth >25 mm. A gap width 0-15 mm, backfilling is not requested
Hilti Firestop Acrylic Sealant CFS-S ACR	

Sound Insulation for flexible wall

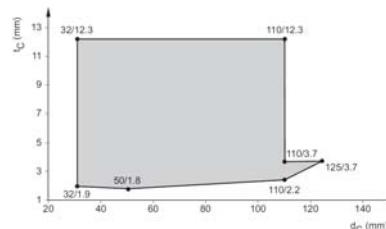
$$D_{n,w} = 60 \text{ dB}$$

$$R_w = 53 \text{ dB}$$

Pipes types	Copper, unalloyed steel, alloyed steel, cast iron, stainless steel
Pipe outside diameter	dm < 42 mm
Pipe thickness	1.2 mm < tm < 14.2 mm
Elastomeric foamed thermal insulation	CS with minimum length (ld>250mm) on both sides of the wall.
Elastomeric foamed thermal insulation thickness	9 mm < De < 35 mm
Incombustible thermal insulation, based on mineral wool (combustibility class A1 or A2 in acc EN 13501	- Conlit 150 inside the wall/floor only with Insulation thickness (td>19 mm) - Rockwool 800, covering the metal pipe outside the wall/floor with Insulation thickness td> 20 mm



\*\*) The pipe wall thickness approved can be found in this graphic





CONTENTS

# Straight plastic pipe in a shaft wall

ID

WW-SW-PP-0216

## FIRESTOP COLLAR ENDLESS

0216\_01

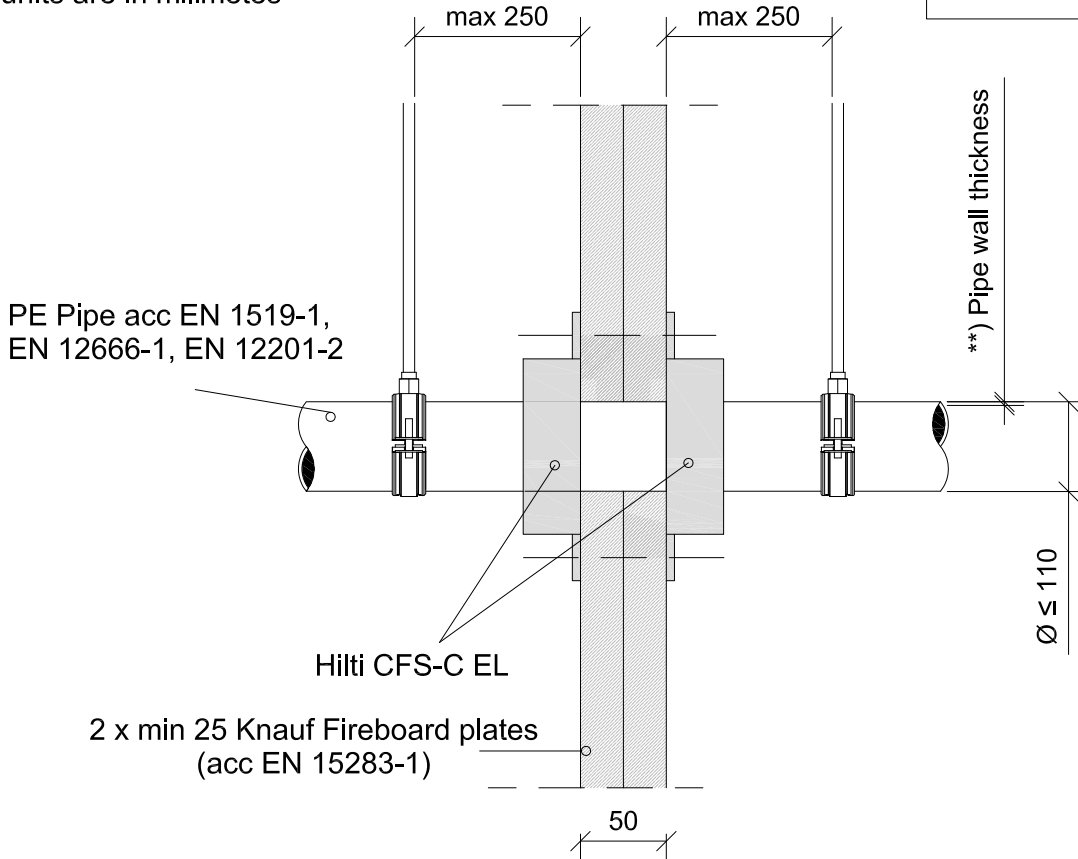
REV

00

No scale

All units are in millimetres

Fire Rating EI 90 U/U



PE Pipe acc EN 1519-1,  
EN 12666-1, EN 12201-2

Hilti CFS-C EL

2 x min 25 Knauf Fireboard plates  
(acc EN 15283-1)

\*\*). Pipe wall thickness

Ø ≤ 110

50

### Annular gap fill material

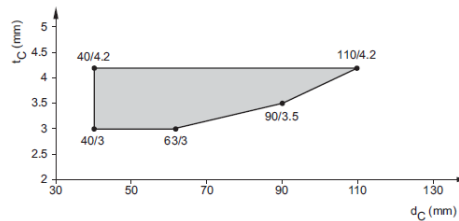
Hilti Firestop Filler CFS-FIL	The annular gap should be 5-40 mm applied from one side over the entire thickness of the wall.
----------------------------------	--

- Approval ETA-14/0085 of 23/04/2014
- Reaction to fire acc EN 13501-1
- Fire resistance test acc 1366-3
- Installation according to Hilti instructions

### Sound Insulation for flexible wall

$D_{n,w} = 60 \text{ dB}$
$R_w = 53 \text{ dB}$

\*\*). The pipe wall thickness approved can be found in this graphic





CONTENTS

Inclined plastic pipe in a shaft wall

ID

WW-SW-PP-0217

FIRESTOP COLLAR ENDLESS

0217\_01

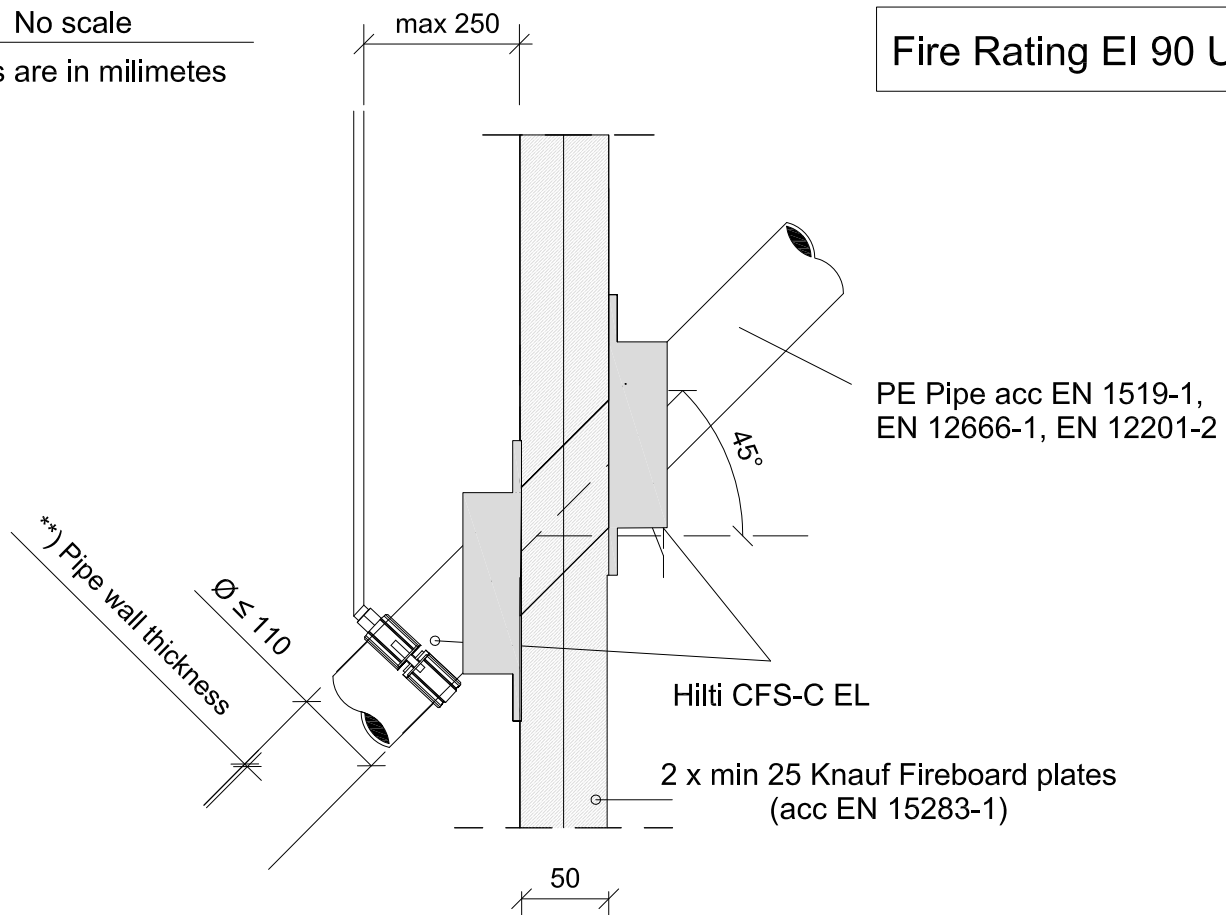
REV

00

No scale

All units are in millimetres

Fire Rating EI 90 U/U



Annular gap fill material

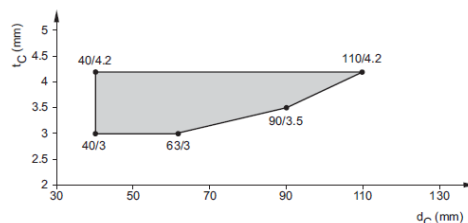
Hilti Firestop Filler CFS-FIL	The annular gap should be 5-40 mm applied from one side over the entire thickness of the wall.
----------------------------------	--

- Approval ETA-14/0085 of 23/04/2014
- Reaction to fire acc EN 13501-1
- Fire resistance test acc 1366-3
- Installation according to Hilti instructions

Sound Insulation for flexible wall

$D_{n,w}$	= 60 dB
$R_w$	= 53 dB

\*\*) The pipe wall thickness approved can be found in this graphic





CONTENTS

Zero distance to other system,  
Conlit or CFS-B

ID

WW-SW-PP-0218

FIRESTOP COLLAR ENDLESS

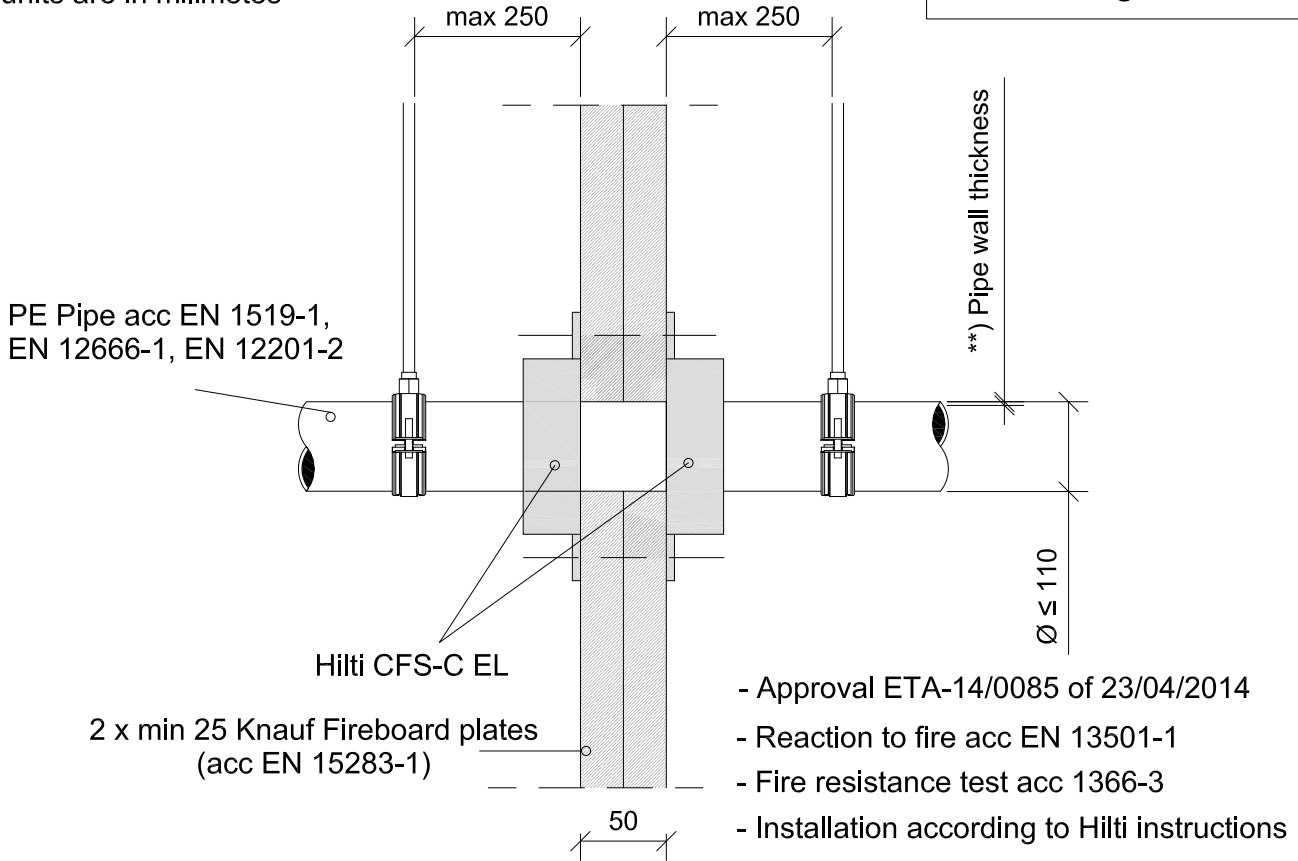
0218\_01

REV  
00

No scale

All units are in millimetres

Fire Rating EI 90 U/U



Approved pipes and insulation to be used with Conlit 150, Rockwool 800 and CFS-B

Annular gap fill material

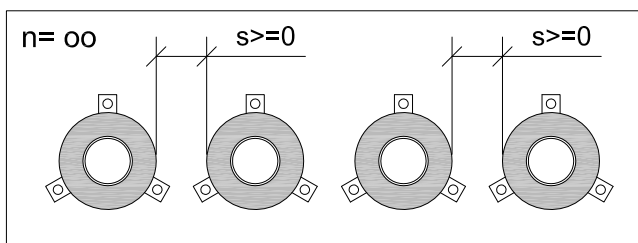
Hilti Firestop Filler CFS-FIL	The annular gap should be 5-40 mm applied from one side over the entire thickness of the wall.
----------------------------------	--

Pipes types	Copper, unalloyed steel, alloyed steel, cast iron, stainless steel
Pipe outside diameter	dm < 42 mm
Pipe thickness	1.2 mm < tm < 14.2 mm
Elastomeric foamed thermal insulation	CS with minimum length (ld>250mm) on both sides of the wall.
Elastomeric foamed thermal insulation thickness	9 mm < De < 35 mm
Incombustible thermal insulation, based on mineral wool (combustibility class A1 or A2 in acc EN 13501	<ul style="list-style-type: none"> <li>- Conlit 150 inside the wall/floor only with Insulation thickness (td&gt;19 mm)</li> <li>- Rockwool 800, covering the metal pipe outside the wall/floor with Insulation thickness td&gt; 20 mm</li> </ul>

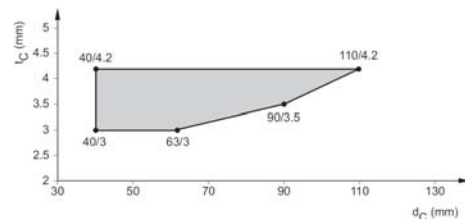
Sound Insulation for flexible wall

$$D_{n,w} = 60 \text{ dB}$$

$$R_w = 53 \text{ dB}$$



\*\*) The pipe wall thickness approved can be found in this graphic





CONTENTS

# Straight plastic pipe in a shaft wall

ID

WW-SW-PP-0219

## FIRESTOP COLLAR ENDLESS

0219\_01

REV

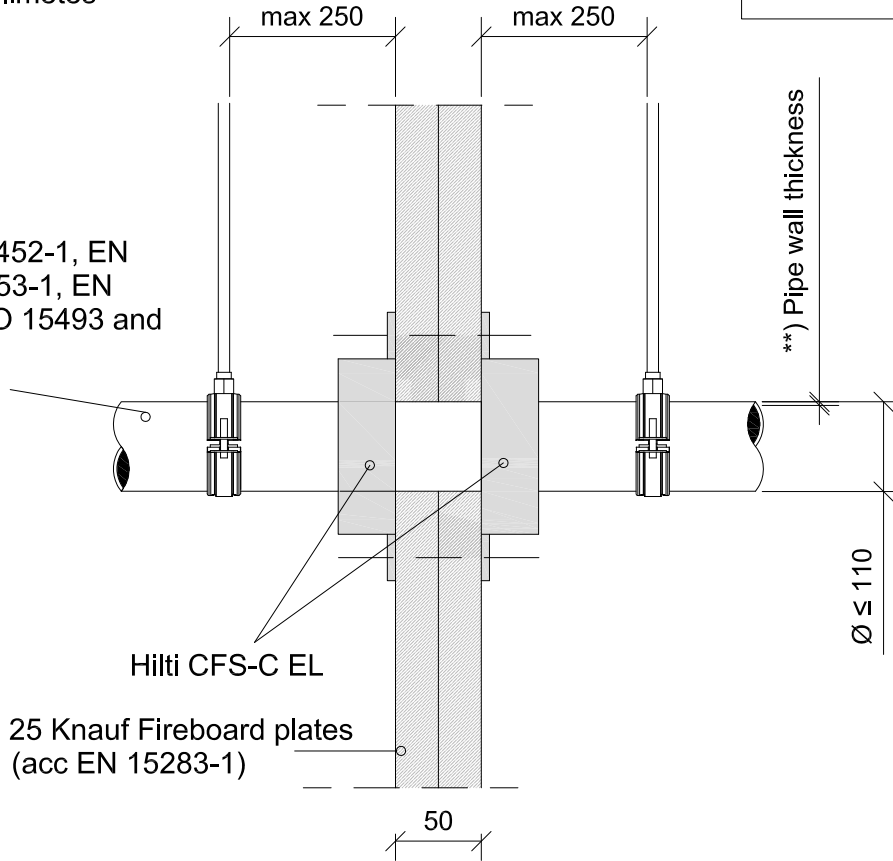
00

No scale

All units are in millimetres

Fire Rating EI 90 U/U

PVC acc EN 1452-1, EN 1329-1, EN 1453-1, EN 1566-1, EN ISO 15493 and DIN 8061/62



Hilti CFS-C EL

2 x min 25 Knauf Fireboard plates (acc EN 15283-1)

Annular gap fill material

Hilti Firestop Filler  
CFS-FIL

The annular gap should be 5-40 mm applied from one side over the entire thickness of the wall.

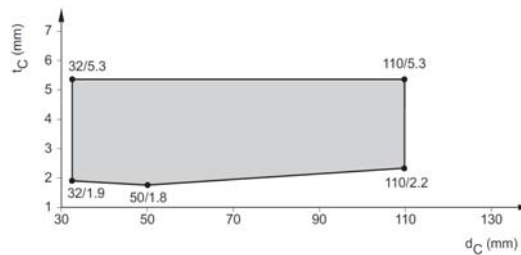
- Approval ETA-14/0085 of 23/04/2014
- Reaction to fire acc EN 13501-1
- Fire resistance test acc 1366-3
- Installation according to Hilti instructions

Sound Insulation for flexible wall

$D_{n,w} = 60 \text{ dB}$

$R_w = 53 \text{ dB}$

\*\*) The pipe wall thickness approved can be found in this graphic





CONTENTS

Inclined plastic pipe in a shaft wall

ID

WW-SW-PP-0220

FIRESTOP COLLAR ENDLESS

0220\_01

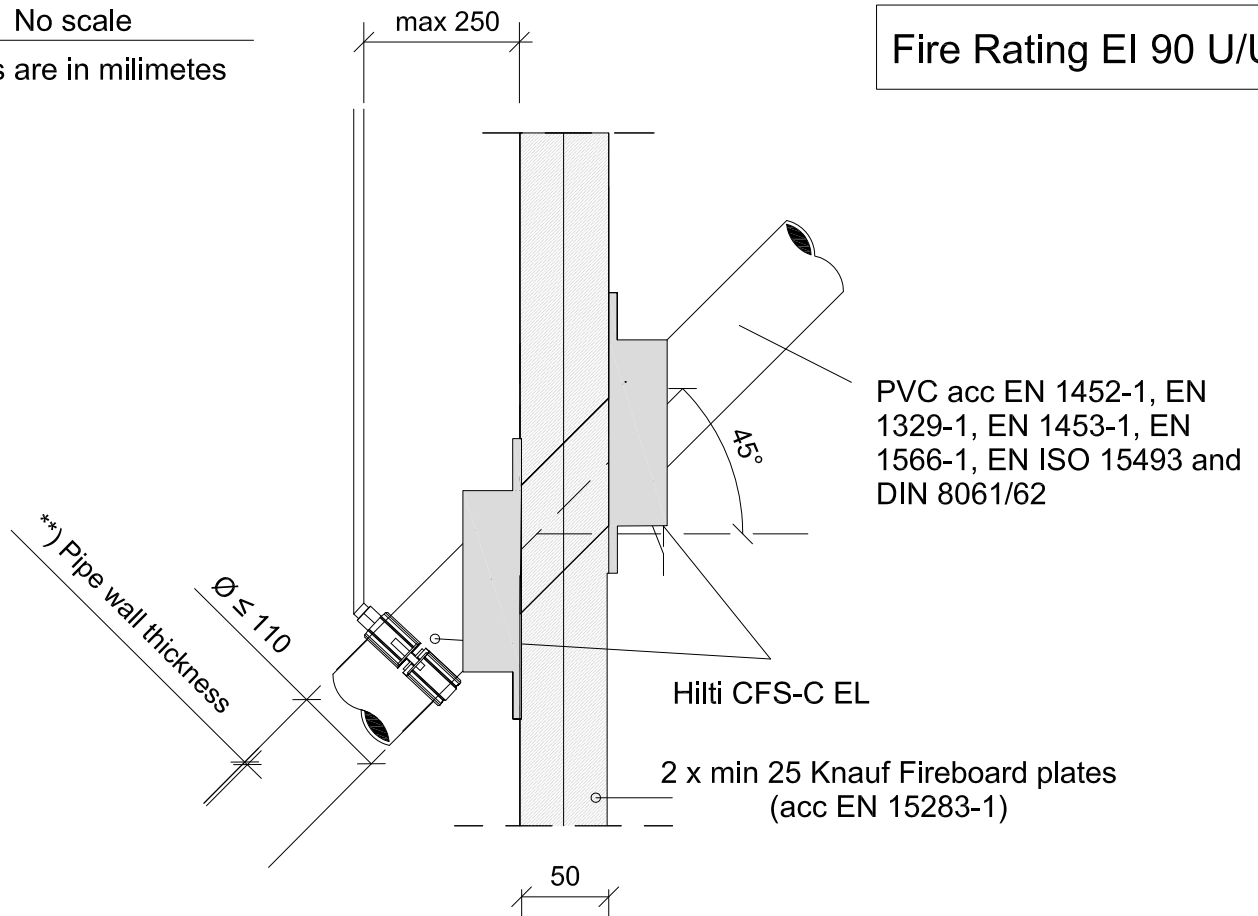
REV

00

No scale

All units are in millimetres

Fire Rating EI 90 U/U



Annular gap fill material

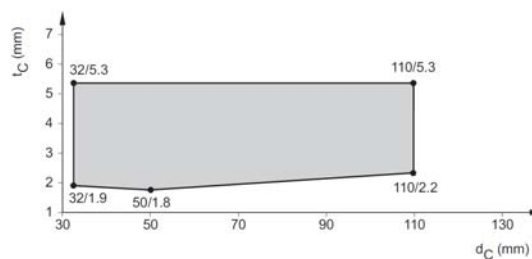
Hilti Firestop Filler CFS-FIL	The annular gap should be 5-40 mm applied from one side over the entire thickness of the wall.
----------------------------------	--

- Approval ETA-14/0085 of 23/04/2014
- Reaction to fire acc EN 13501-1
- Fire resistance test acc 1366-3
- Installation according to Hilti instructions

Sound Insulation for flexible wall

$D_{n,w}$	= 60 dB
$R_w$	= 53 dB

\*\*) The pipe wall thickness approved can be found in this graphic







CONTENTS

Zero distance to other system,  
Conlit or CFS-B

ID

WW-SW-PP-0221

FIRESTOP COLLAR ENDLESS

0221\_01

REV

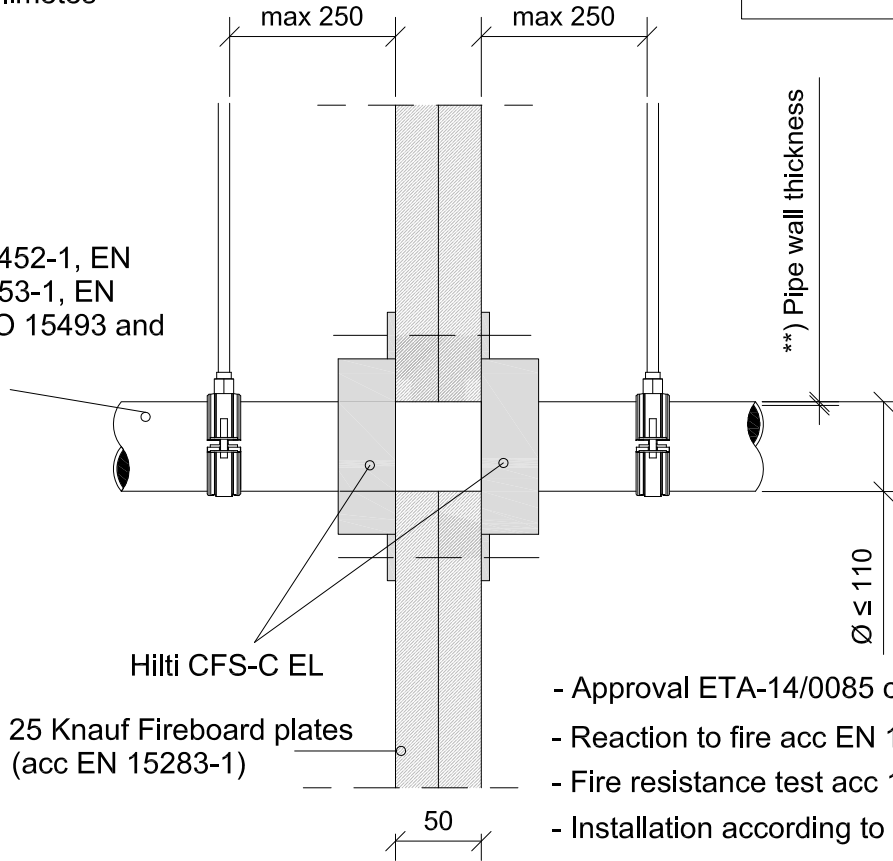
00

No scale

All units are in millimetres

Fire Rating EI 90 U/U

PVC acc EN 1452-1, EN 1329-1, EN 1453-1, EN 1566-1, EN ISO 15493 and DIN 8061/62



- Approval ETA-14/0085 of 23/04/2014
- Reaction to fire acc EN 13501-1
- Fire resistance test acc 1366-3
- Installation according to Hilti instructions

Approved pipes and insulation to be used with Conlit 150, Rockwool 800 and CFS-B

Annular gap fill material

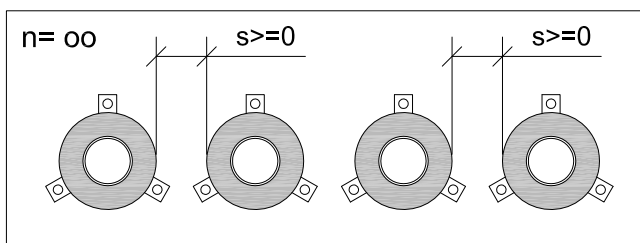
Hilti Firestop Filler CFS-FIL	The annular gap should be 5-40 mm applied from one side over the entire thickness of the wall.
----------------------------------	--

Pipes types	Copper, unalloyed steel, alloyed steel, cast iron, stainless steel
Pipe outside diameter	dm < 42 mm
Pipe thickness	1.2 mm < tm < 14.2 mm
Elastomeric foamed thermal insulation	CS with minimum length (ld>250mm) on both sides of the wall.
Elastomeric foamed thermal insulation thickness	9 mm < De < 35 mm
Incombustible thermal insulation, based on mineral wool (combustibility class A1 or A2 in acc EN 13501	<ul style="list-style-type: none"> <li>- Conlit 150 Inside the wall/floor only with Insulation thickness (td&gt;19 mm)</li> <li>- Rockwool 800, covering the metal pipe outside the wall/floor with Insulation thickness td&gt; 20 mm</li> </ul>

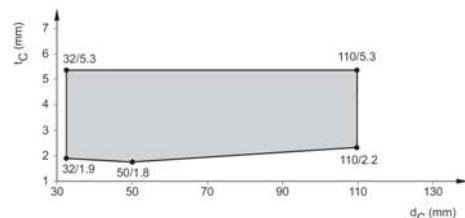
Sound Insulation for flexible wall

$$D_{n,w} = 60 \text{ dB}$$

$$R_w = 53 \text{ dB}$$



\*\* ) The pipe wall thickness approved can be found in this graphic





CONTENTS

Straight plastic pipe in a shaft wall

ID

WW-SW-PP-0228

FIRESTOP COLLAR ENDLESS

0228\_01

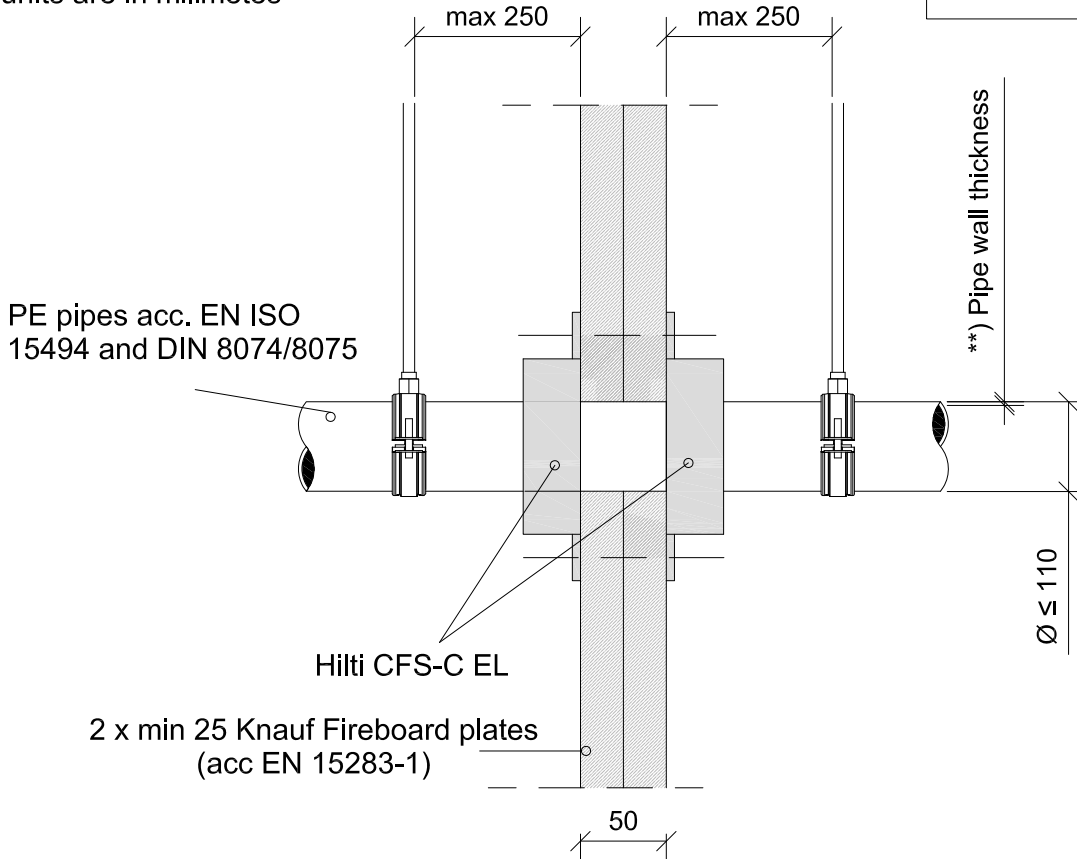
REV

00

No scale

All units are in millimetres

Fire Rating EI 90 U/U



Annular gap fill material

Hilti Firestop Filler  
CFS-FIL

The annular gap should be 5-40 mm applied from one side over the entire thickness of the wall.

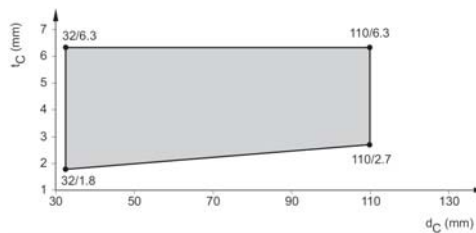
- Approval ETA-14/0085 of 23/04/2014
- Reaction to fire acc EN 13501-1
- Fire resistance test acc 1366-3
- Installation according to Hilti instructions

Sound Insulation for flexible wall

$D_{n,w} = 60 \text{ dB}$

$R_w = 53 \text{ dB}$

\*\*) The pipe wall thickness approved can be found in this graphic





CONTENTS

Inclined plastic pipe in a shaft wall

ID

WW-SW-PP-0229

FIRESTOP COLLAR ENDLESS

0229\_01

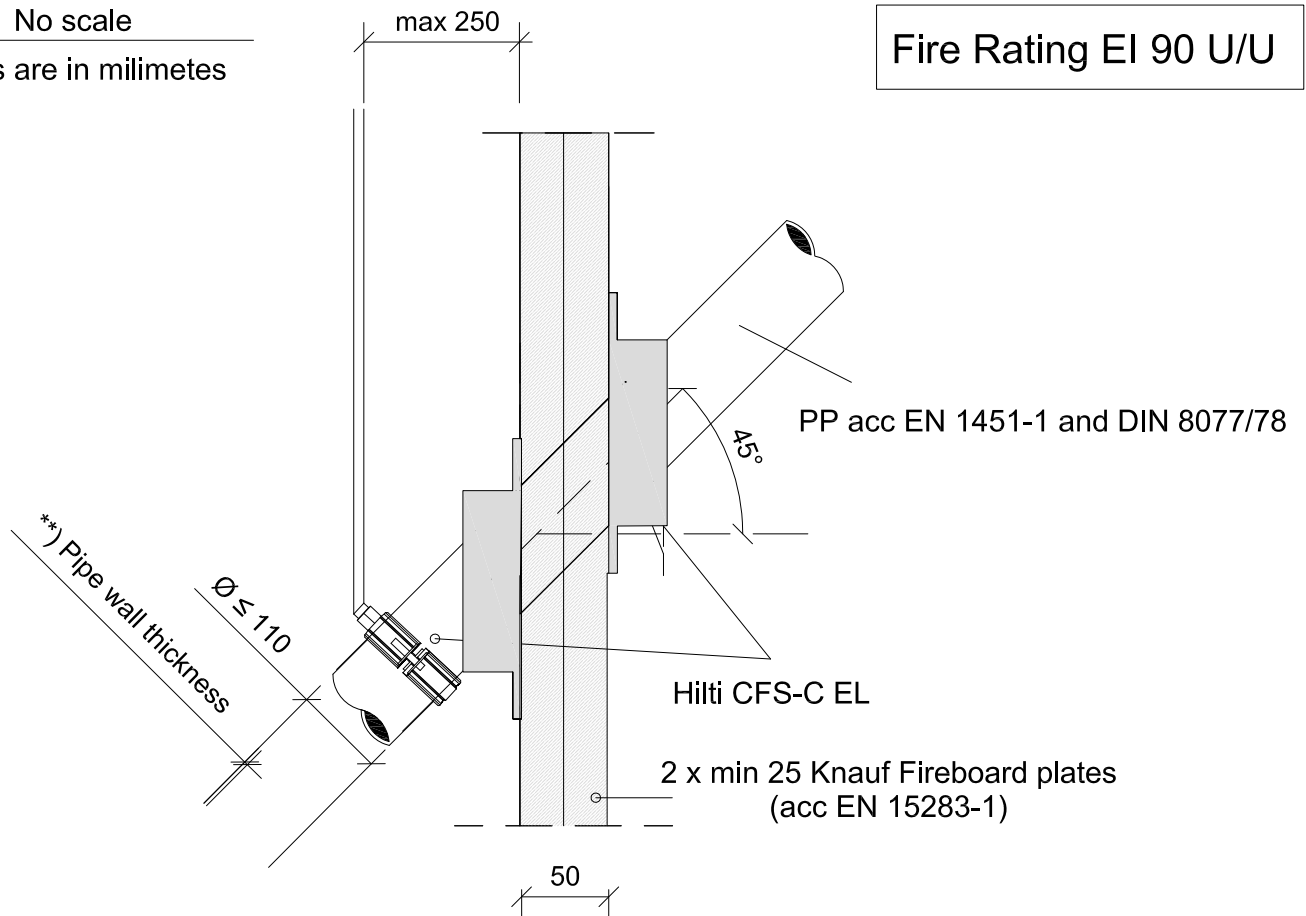
REV

00

No scale

All units are in millimetres

Fire Rating EI 90 U/U



Annular gap fill material

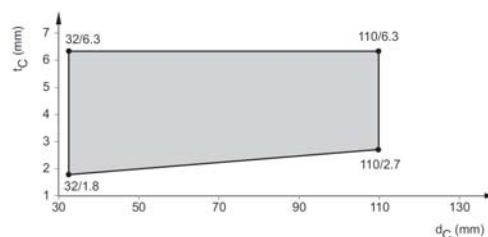
Hilti Firestop Filler CFS-FIL	The annular gap should be 5-40 mm applied from one side over the entire thickness of the wall.
----------------------------------	--

- Approval ETA-14/0085 of 23/04/2014
- Reaction to fire acc EN 13501-1
- Fire resistance test acc 1366-3
- Installation according to Hilti instructions

Sound Insulation for flexible wall

$D_{n,w}$	= 60 dB
$R_w$	= 53 dB

\*\*) The pipe wall thickness approved can be found in this graphic





CONTENTS

Zero distance to other system,  
Conlitt or CFS-B

ID

WW-SW-PP-0230

FIRESTOP COLLAR ENDLESS

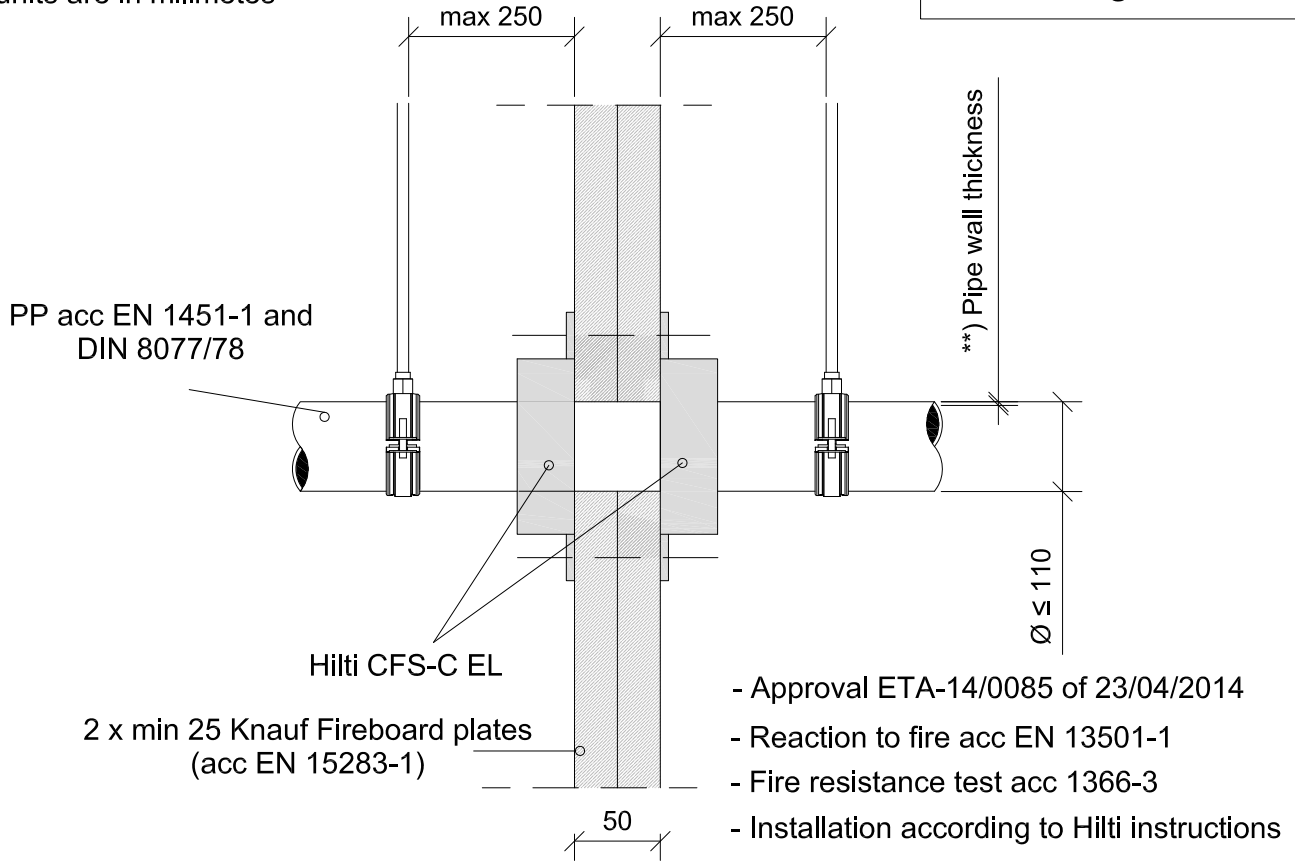
0230\_01

REV  
00

No scale

All units are in millimetres

Fire Rating EI 90 U/U



Approved pipes and insulation to be used with Conlitt 150, Rockwool 800 and CFS-B

Annular gap fill material

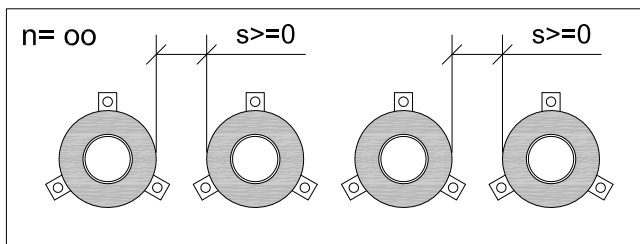
Hilti Firestop Filler CFS-FIL	The annular gap should be 5-40 mm applied from one side over the entire thickness of the wall.
----------------------------------	--

Pipes types	Copper, unalloyed steel, alloyed steel, cast iron, stainless steel
Pipe outside diameter	dm < 42 mm
Pipe thickness	1.2 mm < tm < 14.2 mm
Elastomeric foamed thermal insulation	CS with minimum length (ld>250mm) on both sides of the wall.
Elastomeric foamed thermal insulation thickness	9 mm < De < 35 mm
Incombustible thermal insulation, based on mineral wool (combustibility class A1 or A2 in acc EN 13501	<ul style="list-style-type: none"> <li>- Conlitt 150 inside the wall/floor only with Insulation thickness (td&gt;19 mm)</li> <li>- Rockwool 800, covering the metal pipe outside the wall/floor with Insulation thickness td&gt; 20 mm</li> </ul>

Sound Insulation for flexible wall

$$D_{n,w} = 60 \text{ dB}$$

$$R_w = 53 \text{ dB}$$



\*\*) The pipe wall thickness approved can be found in this graphic

